



Lorne Gardens, W11

£634 Per week

Dexters



Lorne Gardens, W11

A two bedroom apartment in a gated modern block with porter and parking space. The property has a spacious reception and dining room with wooden flooring throughout, a modern separate kitchen and modern bathroom. Heating & hot water included.

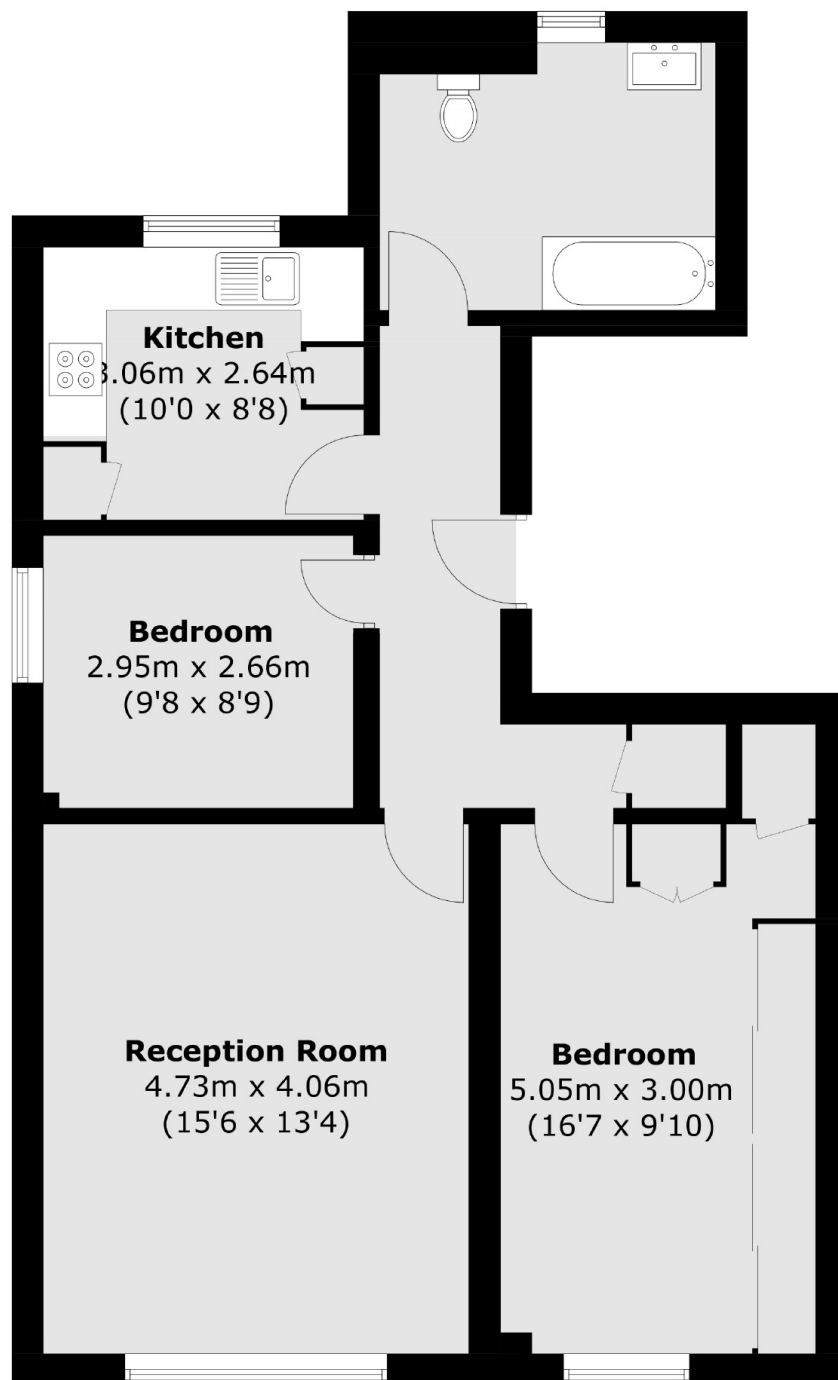
Cameret Court is ideally located for the shops, bars and restaurants of Holland Park, with both Westfield Shopping Centre and Kensington High Street nearby. There are also good transport links close by at Holland Park and Shepherds Bush underground stations.

Features

- Two Double Bedrooms
- Spacious Dining/Reception
- Separate Kitchen
- Gated Portered Block
- Wood Flooring
- Allocated Parking Space



Lorne Gardens, London, W11



Total area (approx.): 71.5 sq. m (769.6 sq. ft)