



Prince Of Wales Road, NW5

£650,000

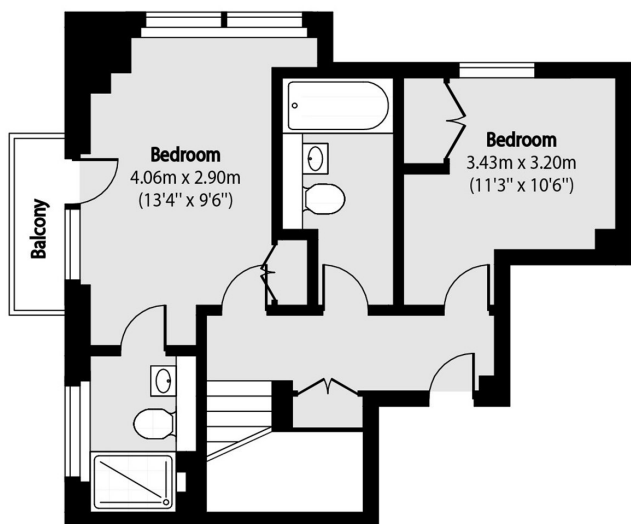
This stunning two double bedroom, two bathroom duplex apartment is in great condition throughout. The property has a large wraparound terrace, air conditioning throughout and an open plan kitchen/reception room.

Located at the west end of Prince of Wales Road, the property is close to Primrose Hill and Belsize Park. It also has excellent transport links, with both Chalk Farm tube and Kentish Town West Overground nearby.

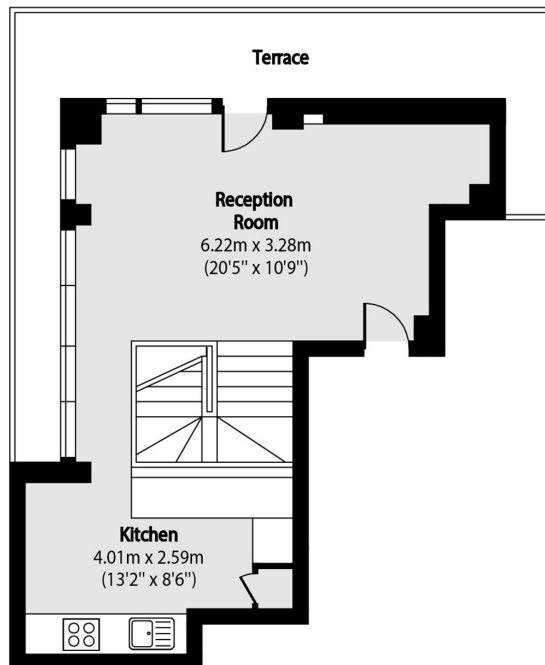
Features

- Two Double Bedrooms
- Two Bathrooms
- Large Wraparound Terrace
- Balcony
- Chain Free
- Leasehold

Prince Of Wales Road, London, NW5



Fourth Floor



Fifth Floor

Total area (approx): 77.95 sq m (839 sq. ft)

Balcony total area (approx): 1.95 sq m (21 sq. ft)

Terrace total area (approx): 15.42 sq m (166 sq. ft)