



Heathfield Park, NW2

Share of Freehold - £450,000

For Sale, offered with Share of Freehold and Chain Free, situated in a popular cul de sac in Willesden Green, is this well presented two bedroom First Floor flat converted from this imposing period building in Heathfield Park, ideal for first time buyers who want easy access into central London.

The property has a large reception room which opens out to the kitchen overlooking the gardens at the rear. The main bedroom with large bay fronted windows, fitted wardrobes and high ceilings. The second bedroom is ideal for a study or guest bedroom both serviced by a three piece family bathroom.

Located within minutes walk of Walm Lane, offering excellent array of local shops, bars and restaurants, along with excellent transport links via Willesden Green (Jubilee- Zone 2) providing direct access into Central London.

- 2 bedroom First Floor period conversion
- Ideal for first time buyers
- Offered Chain Free and with Share of Freehold
- COUNCIL: Brent (D)

020 7328 2828

enquiries@cameronsstiff.co.uk

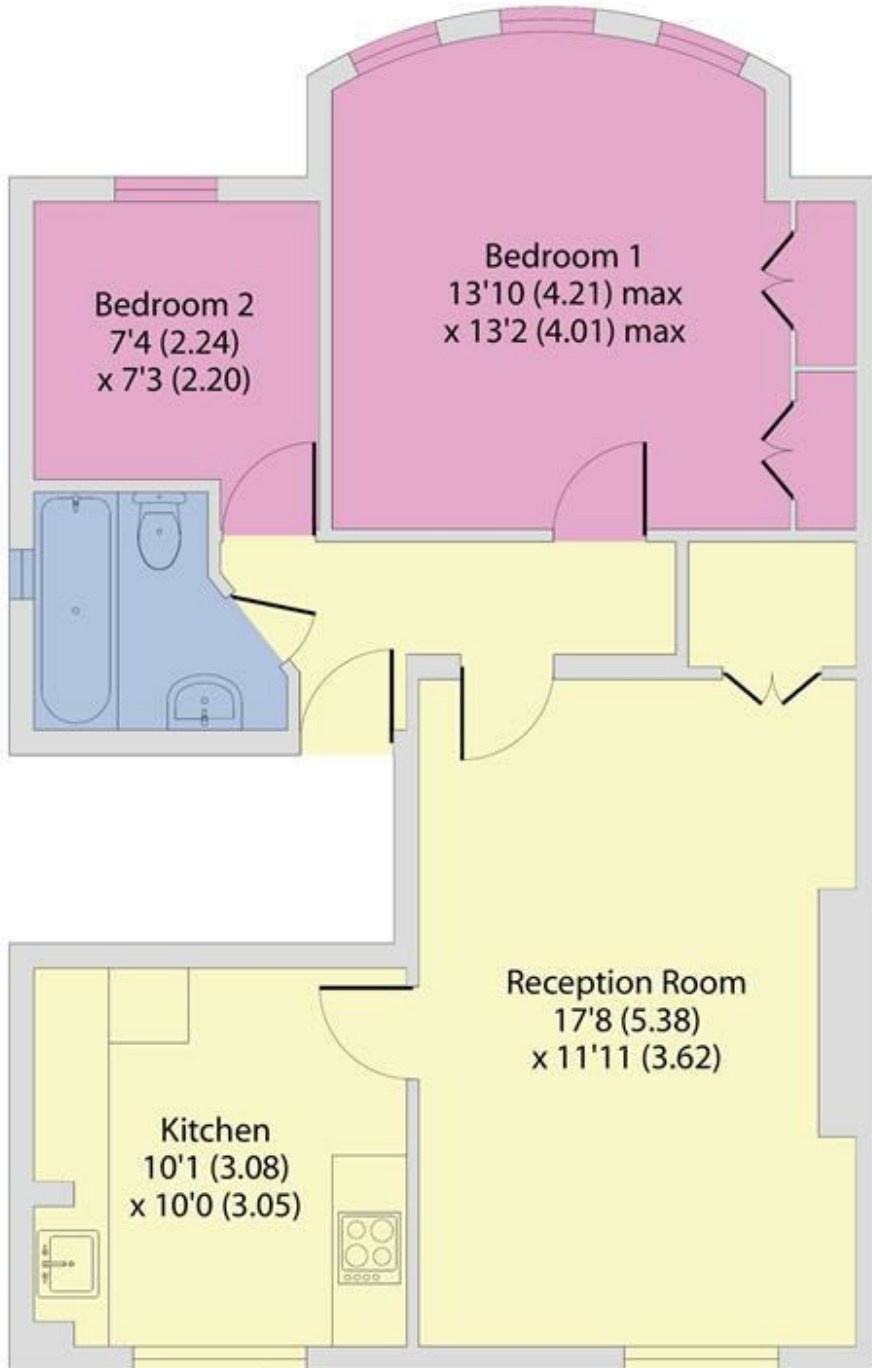
cameronsstiff.co.uk



Heathfield Park, London, NW2

Approximate Area = 639 sq ft / 59.3 sq m

For identification only - Not to scale



FIRST FLOOR

EPC: C

Ref: 19505084

