

Legh Street, Eccles

Manchester



Enhanced with AI by STREET \_99

# Legh Street

Eccles, Manchester

Modern two-bedroom terraced house with spacious lounge, open plan kitchen, utility, and three-piece bathroom. Quiet street near amenities and transport. Ideal for first-time buyers or investors. Council Tax band: A

Tenure: Freehold

- Fabulous First Time Buy Positioned on a Quiet One Way Street
- Spacious Lounge
- Open Plan Fitted Kitchen and Dining Space with Additional Utility Space
- Two Generously Sized Bedrooms
- Three Piece Bathroom Suite
- Fabulous Garden to the Rear with Brick Built Storage Shed
- Excellently Located Close to Amenities and Transport Links



HILLS



**Lounge**

12' 9" x 12' 8" (3.89m x 3.86m)

**Kitchen / Diner**

12' 8" x 10' 8" (3.86m x 3.25m)

**Utility Room**

9' 1" x 3' 8" (2.77m x 1.12m)

**Landing**

**Bedroom One**

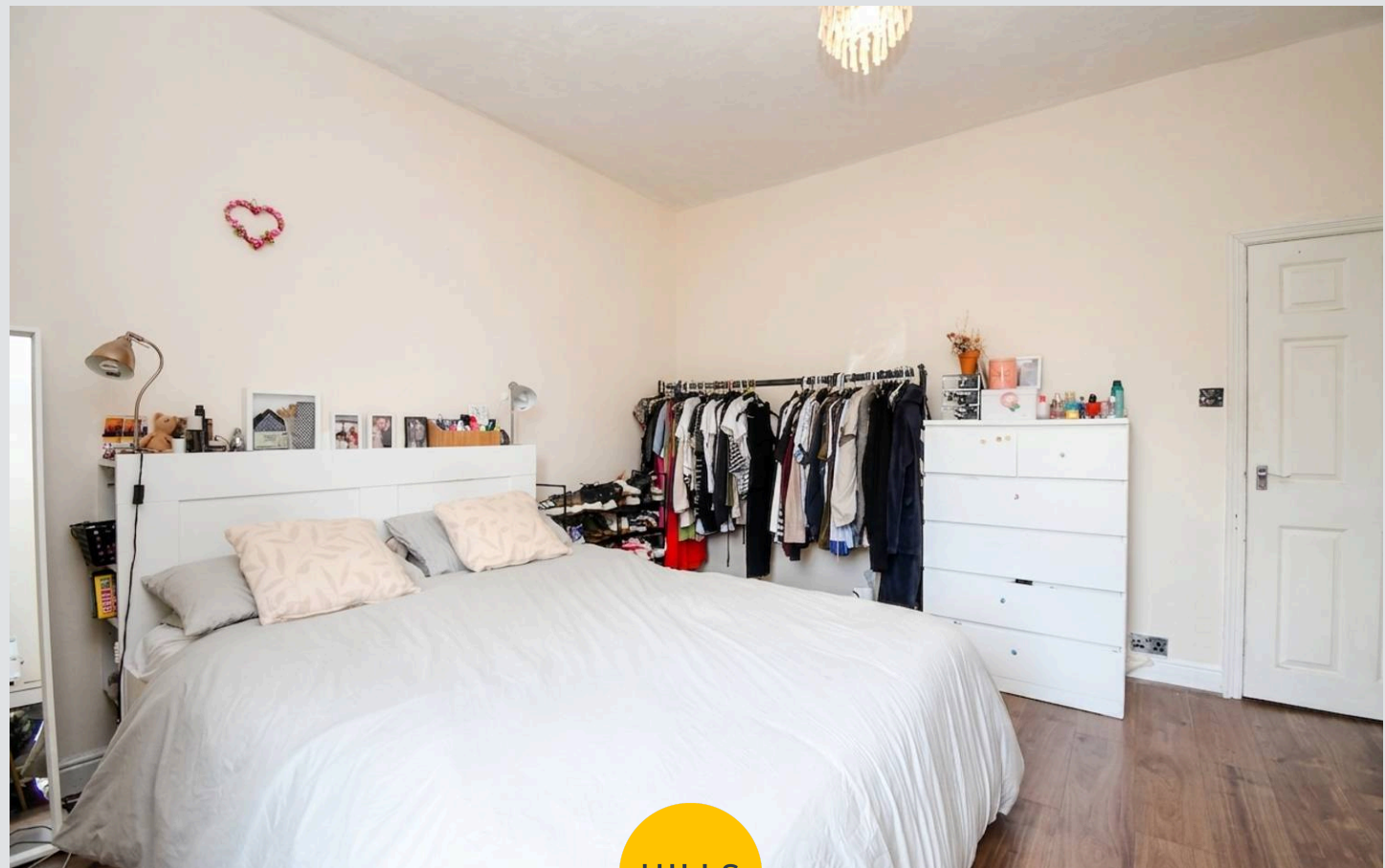
12' 9" x 12' 9" (3.89m x 3.89m)

**Bedroom Two**

8' 5" x 8' 1" (2.57m x 2.46m)

**Bathroom**

14' 1" x 4' 0" (4.29m x 1.22m)



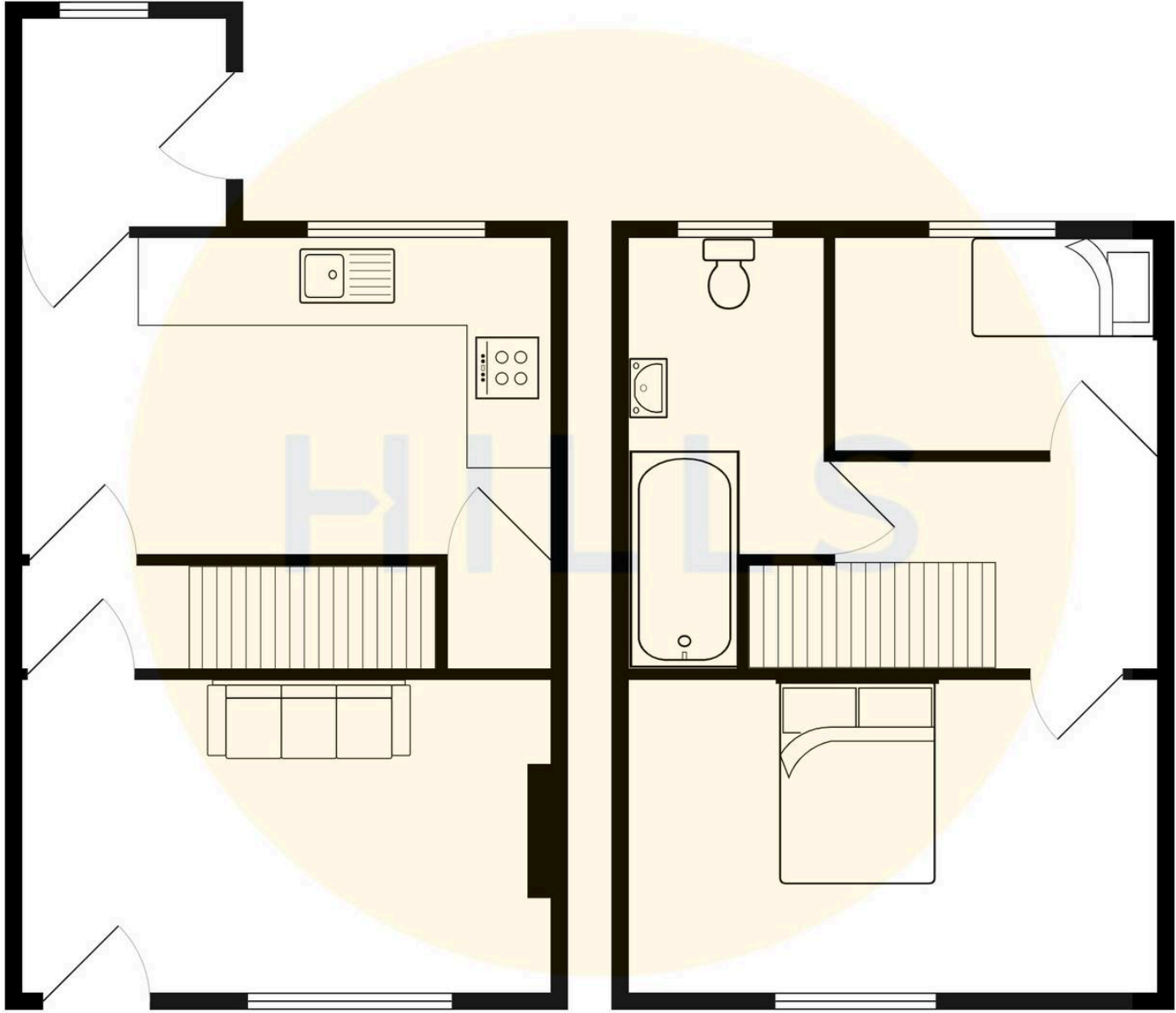
HILLS





HILLS







## Hills | Salfords Estate Agent

Hills Residential, Sentinel House Albert Street – M30 0SS

0161 707 4900

[sales@hills.agency](mailto:sales@hills.agency)

[www.hills.agency/](http://www.hills.agency/)



By law, we are required to conduct anti-money laundering checks on all potential buyers and sellers. In line with HMRC guidelines, our trusted partner, Coadjute, will securely manage these checks on our behalf. A non-refundable fee of £45 + VAT per person will apply, and Coadjute will handle the payment. Once an offer is accepted, Coadjute will send a secure link for you to complete the biometric checks. These checks must be completed before we can send the memorandum of sale to all parties. PLEASE NOTE: The Agent has not tested any equipment, fixtures, fittings or services so cannot verify that they are in working order or fit for the purpose. References to the properties tenure are based on information supplied by the seller. You are advised to check the availability of this property before travelling any distance to view. Every effort has been made to ensure these particulars are correct and not misleading but their accuracy is not guaranteed nor do they form part of any contract.