



Castles

OFFERS OVER

£469,950

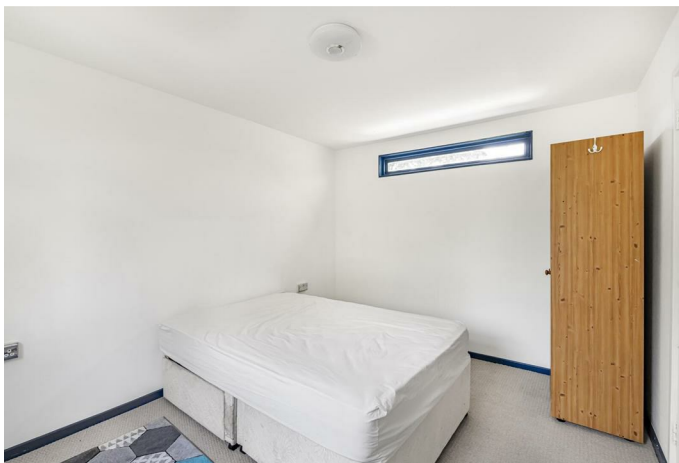
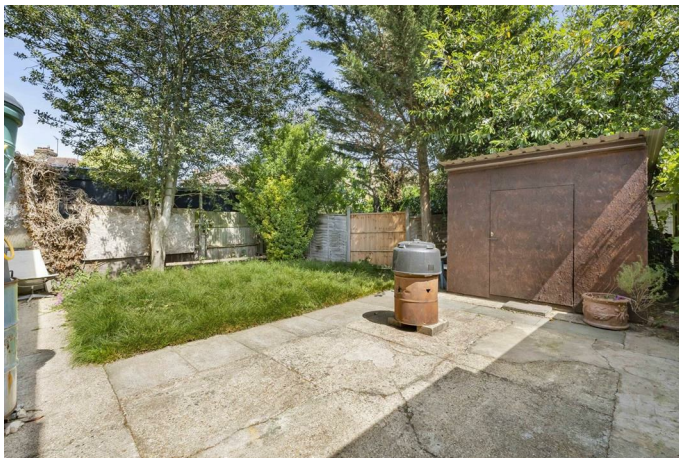
Brettenham Road

, N18 2HF

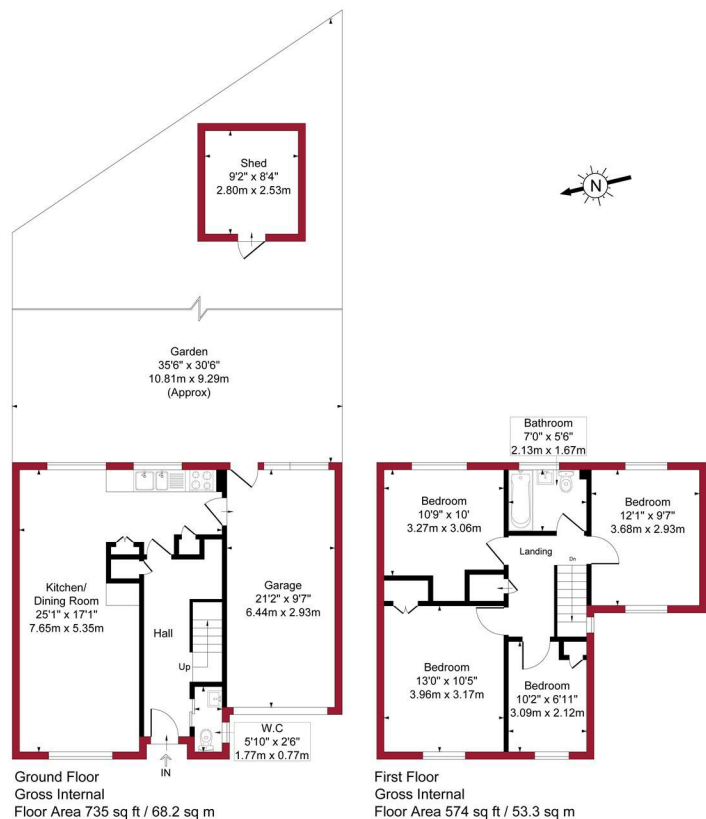
PROPERTY SUMMARY

A four bedroom Semi Detached property situated within 1/4 mile of A406 Road link and 1/2 mile of Fore Street with it's shops and transport links. The property comprises of Reception, WC, kitchen diner to ground floor with a further four bedrooms and bathroom to first floor. The property also has features to include, 35ft rear garden, off street parking and garage. View early to avoid disappointment.

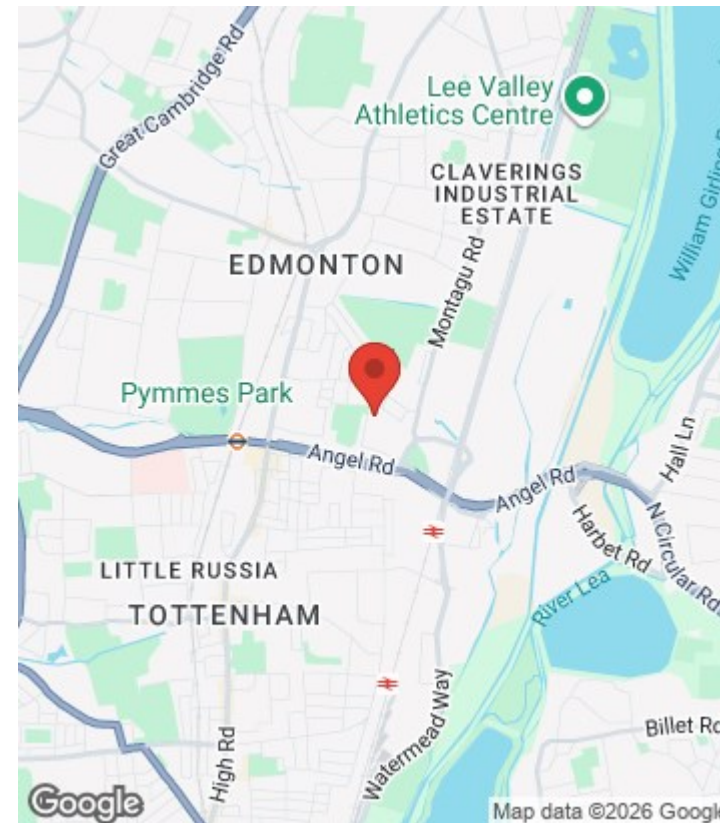
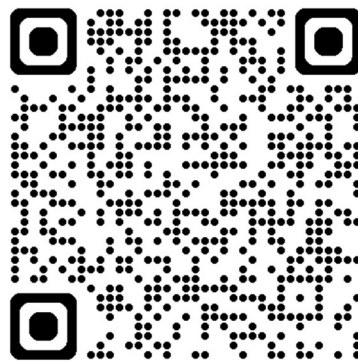




Brettenham Road, London, N18 Approximate Gross Internal Area = 1309 sq ft / 121.5 sq m



For a guide to the area please scan this code for more information



House - Semi-Detached
Freehold
Council: Enfield
Council Tax Band: E

Agents Note: Whilst every care has been taken to prepare these particulars, they are for guidance purposes only. All measurements are approximate and are for general guidance purposes only and whilst every care has been taken to ensure their accuracy, they should not be relied upon and potential buyers/tenants are advised to recheck the measurements



OFFICE ADDRESS
438 Hertford Road
Edmonton
London
N9 8AB

OFFICE DETAILS
020 8804 8123
edmonton@castles.london
<https://www.castles.london/>

