



HANSON PARTNERS
Imperial Crescent, SW6



An exceptional and highly private five-bedroom modern family residence, offering underground parking and picturesque views over the River Thames.

IMPERIAL CRESCENT



Arranged over five spacious floors, this impressive home provides outstanding living and entertaining space, complemented by five well-proportioned bedrooms. The property further benefits from a private patio garden and a separate self-contained studio with its own shower room—ideal for guests, staff accommodation, or a home office.

IMPERIAL CRESCENT



A generous private garage is located on the lower level, providing secure underground parking. Upper floors enjoy delightful views across the beautifully maintained gardens of Imperial Wharf and towards the River Thames.



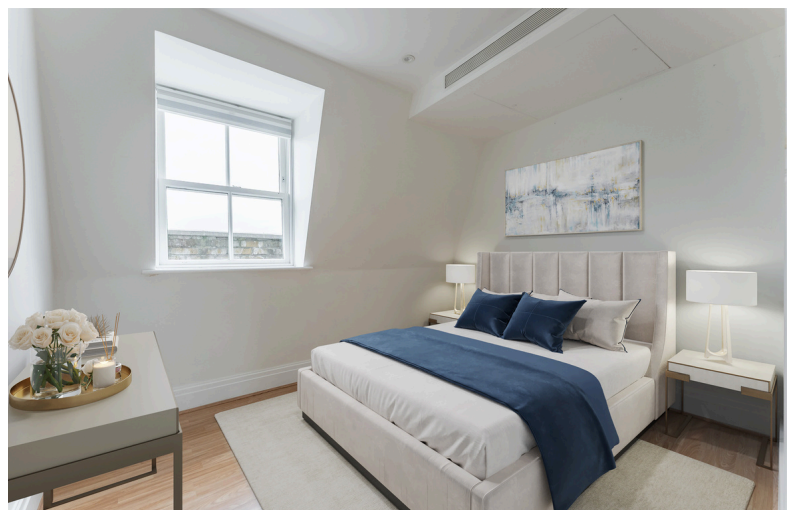






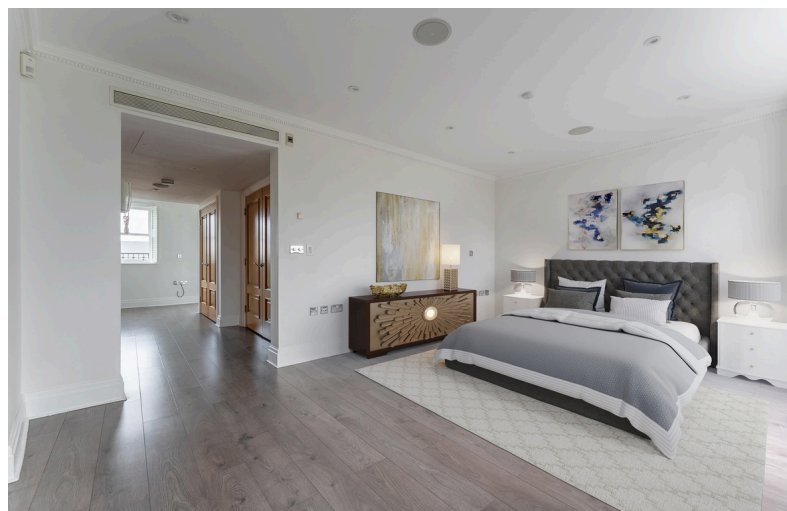
IMPERIAL CRESCENT

Imperial Crescent forms part of the prestigious, gated Imperial Wharf development, renowned for its security, exclusivity, and excellent amenities. Residents enjoy close proximity to a wide selection of restaurants, cafés, and shops within Imperial Wharf, as well as a nearby Sainsbury's Superstore.



IMPERIAL CRESCENT

The renowned Harbour Club is adjacent, offering luxury members-only health, fitness, and leisure facilities. Transport links are excellent, with Imperial Wharf station close by, providing easy access to West Brompton and the Underground to the north, and Clapham Junction to the south.



IMPERIAL CRESCENT

Excellent schools and educational institutions are located within a short distance of Imperial Wharf, making it attractive for families. The area enjoys a strong sense of community, impressive river walks and well-maintained landscaped gardens.



IMPERIAL CRESCENT

The property is presented in excellent condition and offers the rare opportunity for a purchaser to move in immediately and enjoy the house as it stands. Equally, it provides significant scope for renovation, reconfiguration, or interior enhancement, allowing a buyer to tailor the space precisely to their own taste and requirements. With its substantial footprint, flexible layout, and prime riverside setting, the house represents an outstanding canvas for creating a truly bespoke family home in one of Imperial Wharf's most sought-after locations.



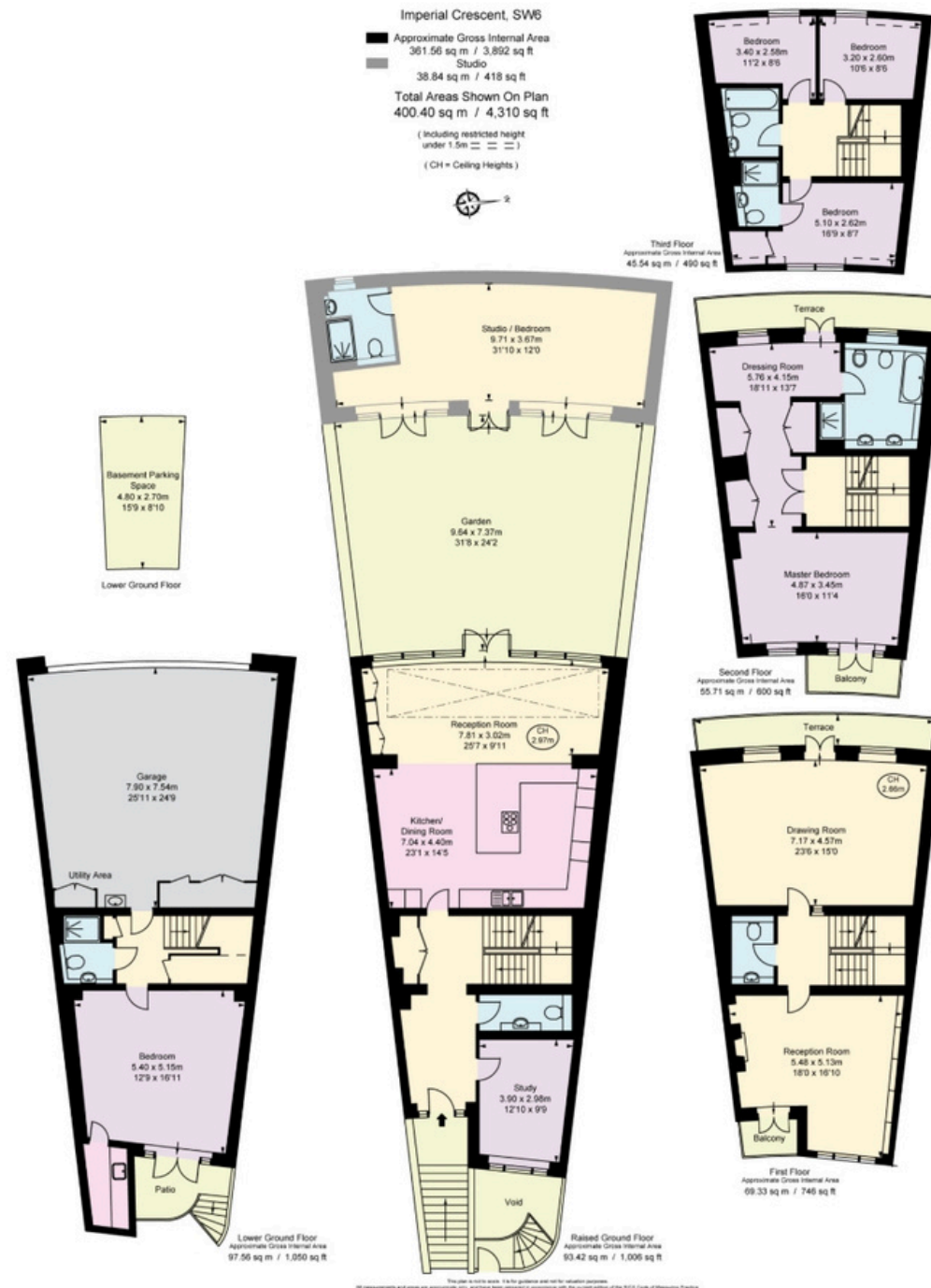
IMPERIAL CRESCENT

Imperial Crescent is a prestigious, award-winning riverside development situated on the north bank of the River Thames between Fulham and Chelsea — two of London's most desirable residential areas.

IMPERIAL CRESCENT



Battersea Park and Hurlingham Park are nearby for open green space and outdoor leisure, as well as The Chelsea Harbour and design centre — a hub for art, interiors and lifestyle culture.



Imperial Crescent, London, SW6

HANSON PARTNERS



Info@hansonpartners.com
+44 (0) 20 3633 1819

London office – 33 St James's Square, Mayfair, SW1Y 4JS
Birmingham Office – 103 Colmore Row, B3 3AG