



22 Inchcape Road

Childwall, Liverpool, L16 3ND

Offers over £255,000

 3  1  1  D



22 Inchcape Road

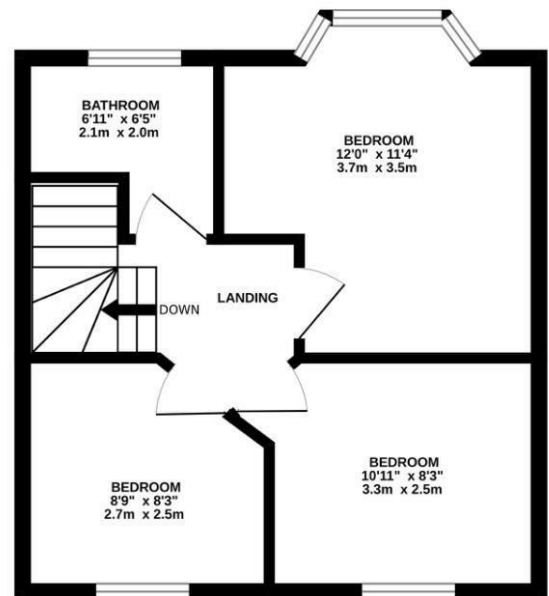
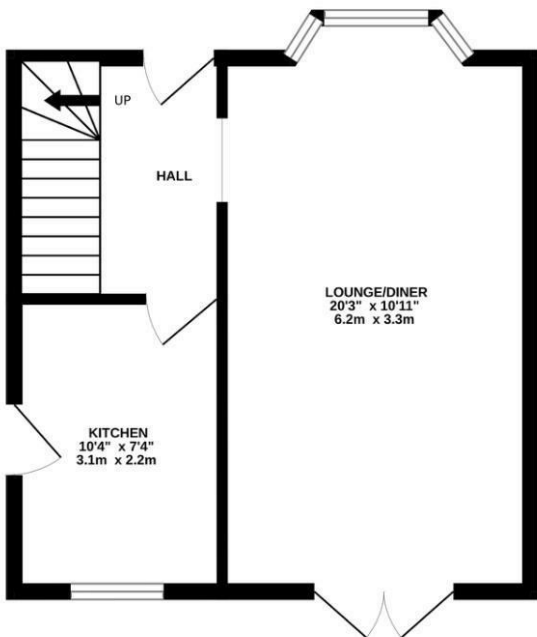
Childwall, Liverpool, L16 3ND

Offers over £255,000



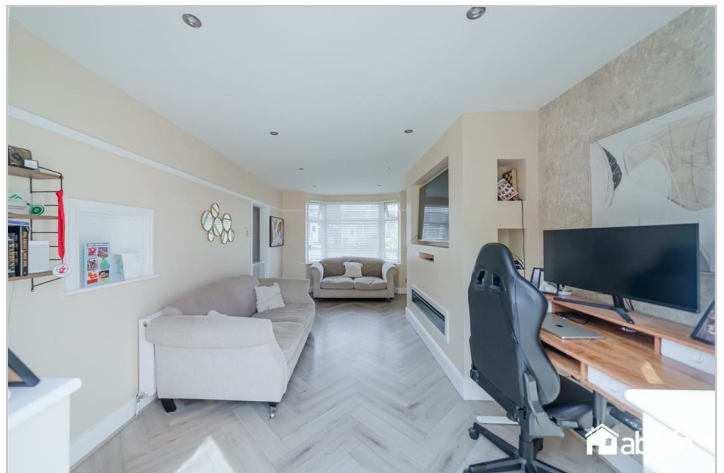
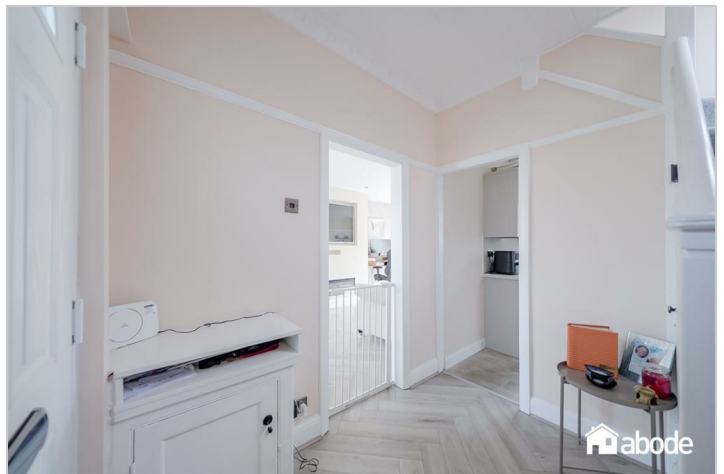
GROUND FLOOR
352 sq.ft. (32.7 sq.m.) approx.

1ST FLOOR
351 sq.ft. (32.7 sq.m.) approx.

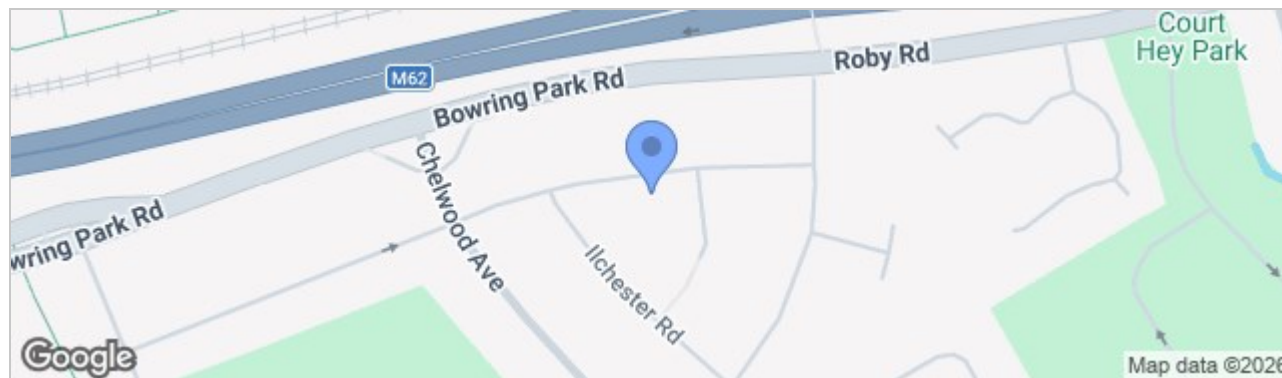


TOTAL FLOOR AREA : 703 sq.ft. (65.3 sq.m.) approx.

Whilst every attempt has been made to ensure the accuracy of the floorplan contained here, measurements of doors, windows, rooms and any other items are approximate and no responsibility is taken for any error, omission or mis-statement. This plan is for illustrative purposes only and should be used as such by any prospective purchaser. The services, systems and appliances shown have not been tested and no guarantee as to their operability or efficiency can be given.
Made with Metropix ©2026



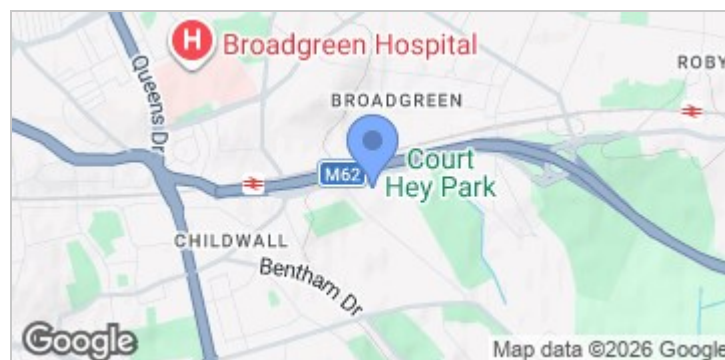
Road Map



Hybrid Map



Terrain Map



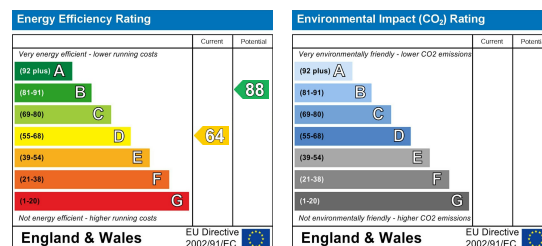
- **SUPERBLY PRESENTED THROUGHOUT**
- **THREE BEDROOM FAMILY HOME**
- **SOUTH FACING REAR GARDEN**
- **MODERN KITCHEN & BATHROOM**
- **OFF ROAD PARKING SUFFICIENT FOR TWO CARS**
- **EXCELLENT LOCAL SCHOOLS**
- **ELECTRIC CAR CHARGING POINT**
- **CHECK STAMP DUTY CALCULATOR FOR AFFORDABILITY**

Viewing

Please contact our Allerton Office on 01516013003 if you wish to arrange a viewing appointment for this property or require further information.

These particulars, whilst believed to be accurate are set out as a general outline only for guidance and do not constitute any part of an offer or contract. Intending purchasers should not rely on them as statements of representation of fact, but must satisfy themselves by inspection or otherwise as to their accuracy. No person in this firm's employment has the authority to make or give any representation or warranty in respect of the property.

Energy Efficiency Graph



82 Coronation Road, Crosby, Liverpool L23 5RH

6 Allerton Road, Mossley Hill, Liverpool, L18 1LN

2 Chapel Lane, Formby, Liverpool, L37 4DU

Tel: 0151 909 3003
Email: crosby@abode-group.co.uk
Web: www.abode-group.co.uk

Tel: 0151 601 3003
Email: allerton@abode-group.co.uk
Web: www.abode-group.co.uk

Tel: 01704 827 402
Email: formby@abode-group.co.uk
Web: www.abode-group.co.uk