

Property ref: 87006



Montagu House, Reading, RG2 0PY

£1,650 PCM



A modern, two bedroom, second floor apartment situated in the sought-after Kennet Island development. Within walking distance of Green Park

- A spacious, light and airy open plan living/kitchen area

and with easy access to the M4 motorway.
Reading Borough Council tax band C.

Available 01/09/2026

Property Particulars

- Two double bedrooms, Master with en-suite shower room
- Modern family-sized bathroom; Allocated parking
- Furnished; Electric heating;
- Walking distance to local amenities and bus routes
- EPC rating C; Managed by HASLAMs

*Fees For Assured Periodic Tenancies: when you rent a property from us you will be required to pay a sum equivalent to one weeks' rent for a holding deposit. Upon successful application, this amount will be off set against your first months' rent. You will also be required to pay a security deposit equivalent to 5 weeks' rent which will be held and protected in line with Deposit legislation. For more information about our fees please visit: www.haslams.net
Fees for all other tenancies (Non Housing Act Tenancies / Company Lets): when you rent a property from us we will charge you a one-off fee per property. This charge is the equivalent of 15 days of the monthly rental charge (+VAT) with a minimum fee of £450 (inc.VAT) up to a maximum of £650 (inc.VAT). Other fees may apply depending on your circumstances.

0118 960 1055

lettings@haslams.net www.haslams.net

Haslams Estate Agents Ltd, 159 Friar Street, Reading, Berkshire, RG1 1HE

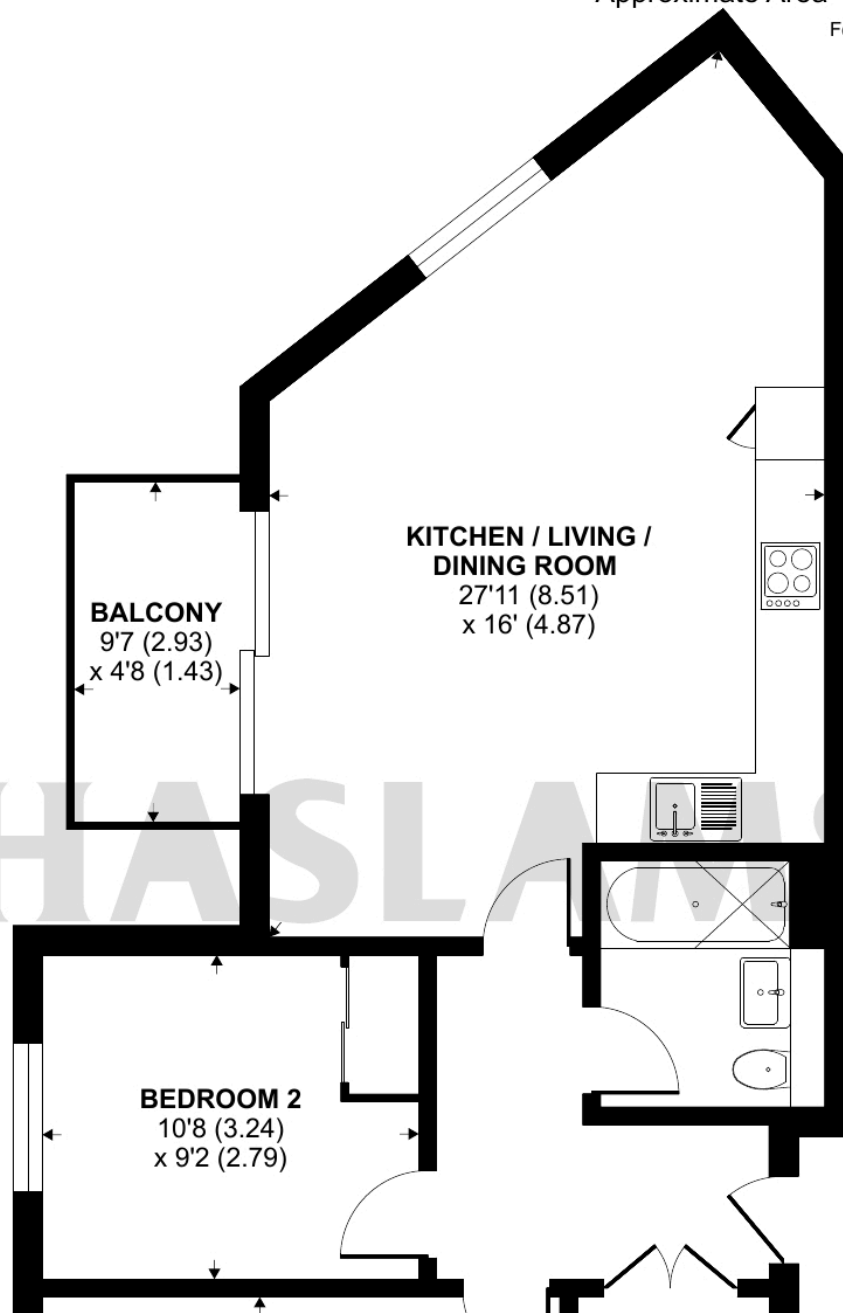


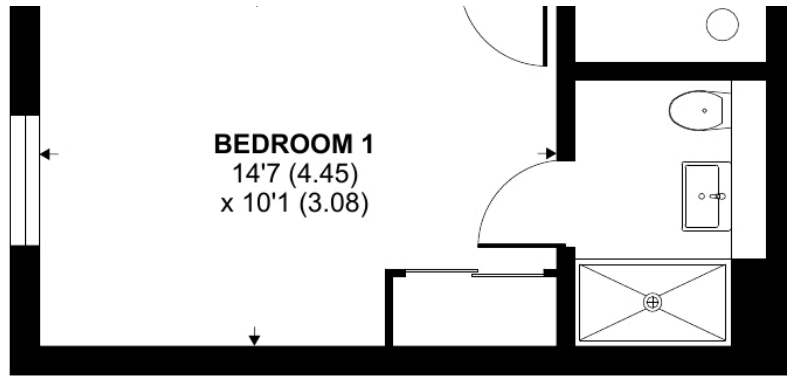


Montagu House, Padworth Avenue, Reading, RG2

Approximate Area = 744 sq ft / 69.1 sq m

For identification only - Not to scale





SECOND FLOOR



Floor plan produced in accordance with RICS Property Measurement 2nd Edition, Incorporating International Property Measurement Standards (IPMS2 Residential). © n7checom 2025. Produced for Haslams. REF: 1299617