



Phyllis Street

£185,000

- COUNCIL TAX BAND - C
- BARRY ISLAND LOCATION
- CLOSE TO BEACHES, THE GOODSHEDS, TRAIN STATION
- NO CHAIN
- IDEAL FIRST TIME BUY / INVESTMENT
- EPC Rating: D



2 1 2



About the property

Close to local amenities; The Goodsheds development, Barry Island, parks, shops, supermarkets, popular school catchment, train station, bus routes, easy access to link roads leading to M4 corridor. *Water Front Location* Call 01446 733224*

Accommodation

Agents Note

It is our understanding that the Property is not registered at the Land Registry which is the case with a significant proportion of land across England and Wales. Your conveyancer will take the necessary steps and advise you as to time-frames for registration

Entrance Hallway

Living/Dining Room

21' 8" max x 14' 7" max (6.60m max x 4.45m max)

Fitted carpet, window to front and rear, stairs leading to first floor, understairs cupboard.

Kitchen

18' 6" max x 8' 6" max (5.64m max x 2.59m max)

Tiled floor, matching wall and base cupboards, breakfast bar, space for appliances, fitted oven with hob and cooker hood, window to rear, uPVC door to rear garden.



Cloakroom

W/c, sink.

Landing

Carpet.

Bedroom One

11' x 14' 7" max (3.35m x 4.45m max)

Fitted carpet, two windows to front.

Bedroom Two

10' 2" x 8' 1" max (3.10m x 2.46m max)

Fitted carpet, window to rear.

Bathroom

Bath with overhead shower, sink, w/c, window to side.

To Front

On street parking.

To Rear

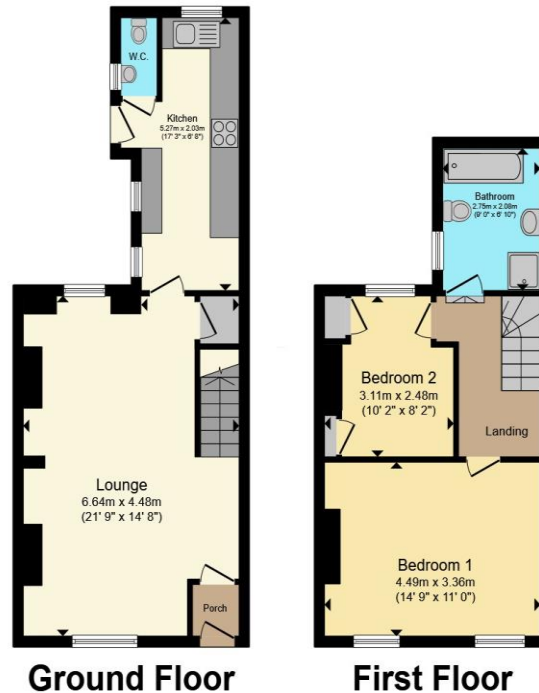
Enclosed rear garden with patio areas and rear lane access.

01446 733224

barry@peteralan.co.uk



Floorplan



Total floor area 76.6 m² (825 sq.ft.) approx

This floor plan is for illustrative purposes only. It is not drawn to scale. Any measurements, floor areas (including any total floor area), openings and orientation are approximate. No details are guaranteed, they cannot be relied upon for any purpose and they do not form part of any agreement. No liability is taken for any error, omission or misstatement. A party must rely upon its own inspection(s). Powered by www.propertybox.io



Important Information

Note while we endeavour to make our sales details accurate and reliable, if there is any point which is of particular interest to you, please contact the office and we will be pleased to confirm the position for you. We have not personally tested any apparatus, equipment, fixtures, fittings or services and cannot verify they are in working order or fit for their purposes. Nothing in these particulars is intended to indicate that carpets or curtains, furnishings or fittings, electrical goods (whether wired or not). Gas fires or light fittings or any other fixtures not expressly included form part of the property offered for sale. This computer generated Floorplan, if applicable, is intended as a general guide to the layout and design of the property. It is not to scale and should not be relied upon for dimensions. Tenure: We cannot confirm the tenure of the property as we have not had access to the legal documents. The buyer is advised to obtain verification from their solicitor or surveyor.

Peter Alan Limited is registered in England and Wales under company number 2073153, Registered Office is Cumbria House, 16-20 Hockliffe Street, Leighton Buzzard, Bedfordshire, LU7 1GN. VAT Registration Number is 500 2481 05. For activities relating to regulated mortgages and non-investment insurance contracts, Peter Alan Limited is an appointed representative of Connells Limited which is authorised and regulated by the Financial Conduct Authority. Connells Limited's Financial Services Register number is 302221. Most buy-to-let

