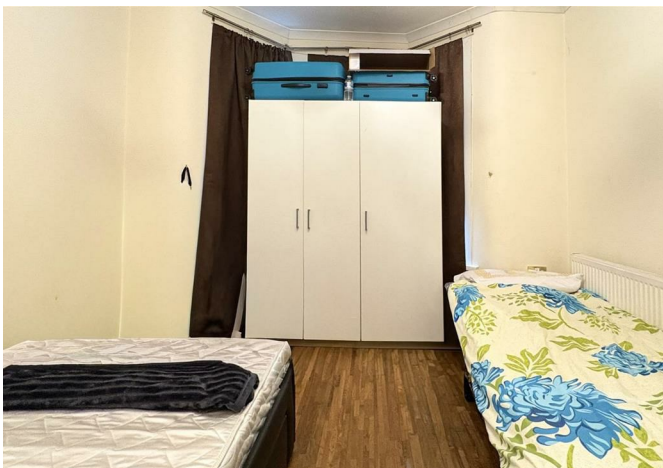




Thorpe Road, London, E6 2HS
£3,000 Per month



Thorpe Road, London, E6 2HS

£3,000 Per month

LONG LET - Nestled on the charming Thorpe Road in East Ham, London, this delightful mid-terrace house offers a perfect blend of comfort and convenience.

The location of this property is particularly advantageous, as it is situated near various stations, providing excellent transport links for commuting into central London and beyond. Additionally, families will appreciate the proximity to local schools, making it an ideal choice for those with children.

This home presents a wonderful opportunity for anyone looking to settle in a vibrant community while enjoying the comforts of a spacious and well-appointed residence. Whether you are a growing family or simply seeking a comfortable living space, this property on Thorpe Road is certainly worth considering

Key Features

- Four Bedrooms
- Separate kitchen
- Private Garden offering a good size outdoor space
- Excellent Location – Situated on a quiet residential street, within easy reach of East Ham Station (District & Hammersmith & City Lines), local schools, shops, and parks.
- Close to local Amenities
- Close to Local Schools

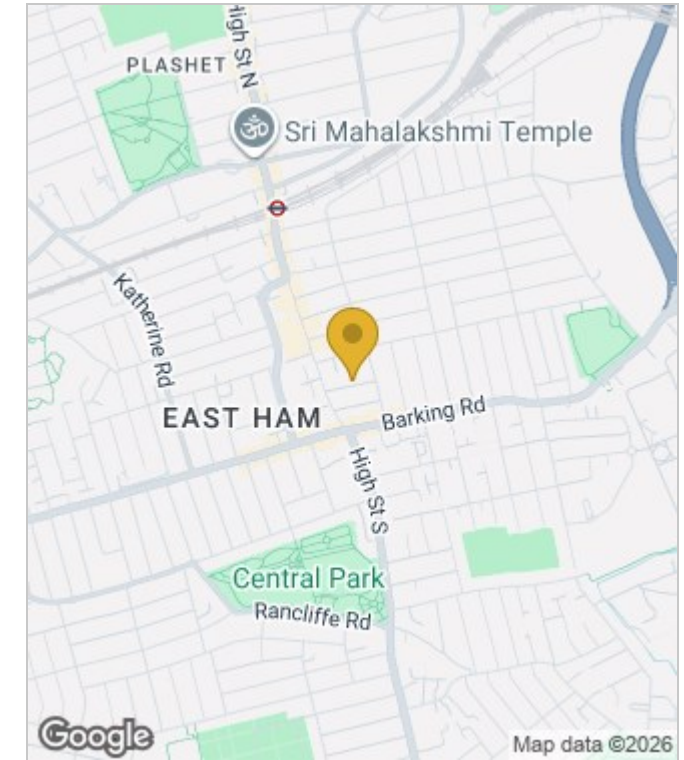


Council Tax Band: C

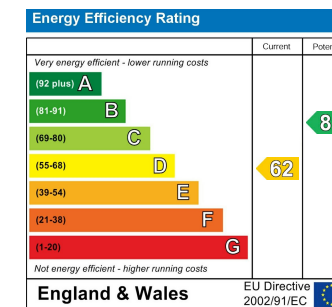
Floor Plans



Area Map



Energy Performance Graph



These particulars, whilst believed to be accurate are set out as a general outline only for guidance and do not constitute any part of an offer or contract. Intending purchasers should not rely on them as statements of representation of fact, but must satisfy themselves by inspection or otherwise as to their accuracy. No person in this firm's employment has the authority to make or give any representation or warranty in respect of the property.