



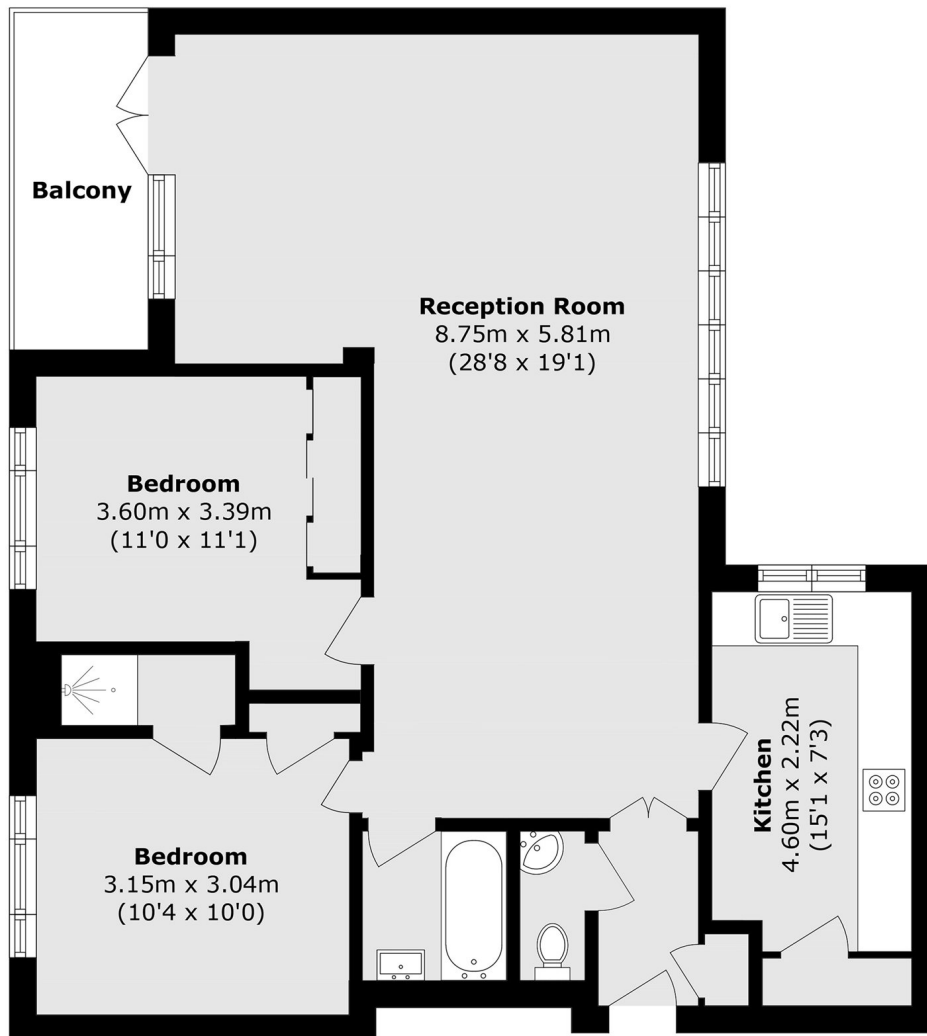
The Knoll, W13

£400,000

Offers in excess of A spacious two bedroom apartment offering bright and well proportioned living in the heart of Ealing. Set within a well maintained development, it provides comfortable accommodation throughout and is ideal for buyers looking to add their own touch. This chain free property benefits from a share of freehold and garage and residents have access to a swimming pool within the development.

Ideally located for a short walk to Ealing Broadway (Elizabeth line) station which provides access to excellent transport links for all over London. There are a range of well regarded local schools.

- No onward chain • Share of Freehold • Two Bedrooms •
- Excellent Transport Links • Spacious Living Area • Garage •



Total area (approx.): 82.1 sq. m (883.7 sq. ft)

Balcony Total (approx.): 3.6 sq. m (38.8 sq. ft)

Robertson Smith & Kempson Northfields Sales
116 Northfield Avenue,
London, W13 9RT
020 8566 2340
northfieldssales@robertsonsmithandkempson.co.uk

Energy Rating: E. We aim to make our particulars both accurate and reliable. However they are not guaranteed; nor do they form part of an offer or contract. If you require clarification on any points then please contact us, especially if you're traveling some distance to view. Please note that appliances and heating systems have not been tested and therefore no warranties can be given as to their good working order.