



Evelyn Mansions

Carlisle Place, SW1P

£3,900 per month
(£900 per week)

The property enjoys a large entertaining space with high ceilings throughout and original Victorian period features, wide entrance hallway, separate fully fitted kitchen, two double bedrooms with two bathroom, one being en-suite.

CHESTERTONS



Evelyn Mansions

Carlisle Place, SW1P

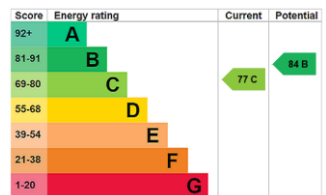
- Two Double Bedroom
- Two Bathroom
- Portered Block
- Ideal Location
- Spacious



The property enjoys a large entertaining space with high ceilings throughout and original Victorian period features, wide entrance hallway, separate fully fitted kitchen, two double bedrooms with two bathroom, one being en-suite.

Evelyn Mansions is a popular mansion block situated on Carlisle Place just off Victoria Street. Victoria station (Gatwick Express, Circle, District & Victoria lines, British Rail) is only moments away and in close proximity to a wide range of shops, bars, restaurants, theatres and the beautiful St. James's Park.

Minimum Term: 12 months
Deposit Required: £0.00
Local Authority: Westminster
Council Tax Band: G
EPC Rating: C
Unfurnished



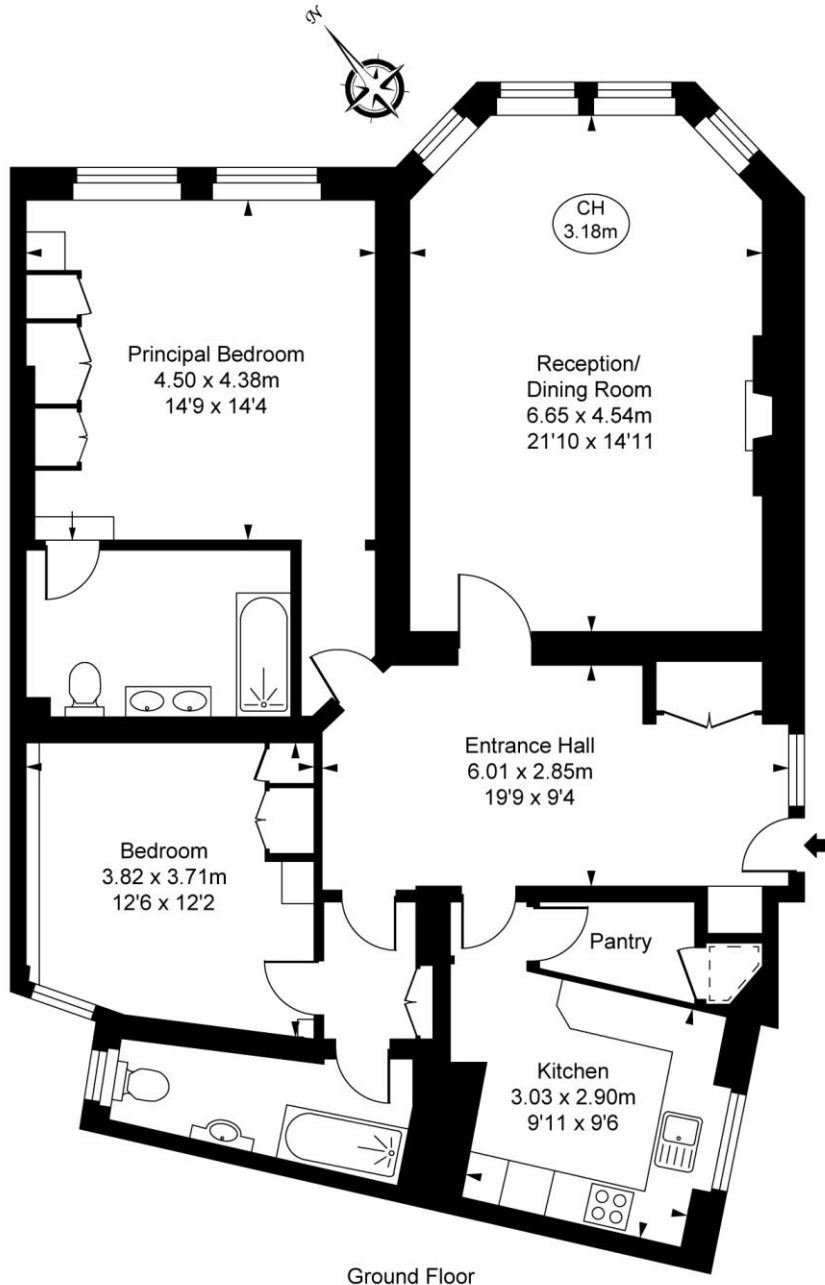
Chestertons Westminster & Pimlico Lettings

105 Wilton Road
 London
 SW1V 1DZ
 westminsterlettingsusers@chestertons.co.uk
 02030408220
 chestertons.co.uk

Additional tenant charges apply (fees apply to non-AST tenancies only)
 Tenancy Agreement Fee: £300
 References per Tenant/Guarantor: £60
 Inventory check (approx. £100 – £250 inc. VAT)
 chestertons.co.uk/property-to-rent/applicable-fees

Carlisle Place, SW1P
Approximate Gross Internal Area
120.69 sq m / 1,299 sq ft

(Including restricted height
under 1.5m [- - - -])
(CH = Ceiling Heights)



Ground Floor

This plan is not to scale. It is for guidance and not for valuation purposes.
All measurements and areas are approximate only, and have been prepared in accordance with the current edition of the RICS Code of Measuring Practice.
© Fulham Performance