



1 Viaduct Gardens London

A beautiful two bedroom apartment is set in the sought after Legacy Building, within the exclusive Embassy Gardens development. The apartment features two double bedrooms and floor to ceiling windows. The spacious open plan living and kitchen area boasts oak flooring and wonderful river views.

Residents can benefit from the amazing on site amenities including the swimming pool, gym, spa and private cinema. The development is ideally located close to Vauxhall station and other zone one transport links.

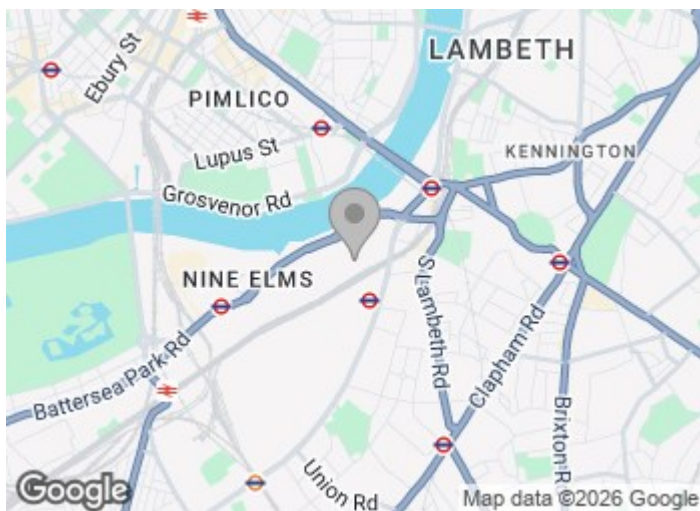
Council Tax Band: Wandsworth - F
Minimum contract: 12 months

£1,100 Per Week

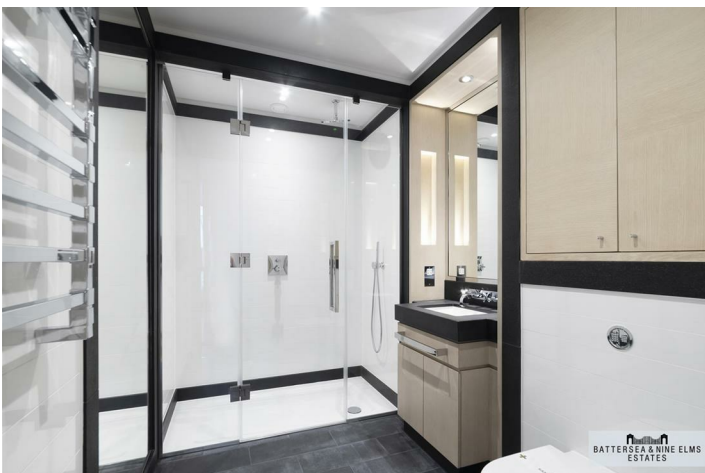
1 Viaduct Gardens London



- Two double bedrooms
- Private balcony
- 24 Hour concierge
- Two bathrooms (one en suite)
- Swimming pool
- Excellent transport links
- River views
- Gym and spa



[Directions](#)



Legacy Building,
Embassy Gardens, SW11
Approximate Gross Internal Area
88.30 sq m / 950 sq ft

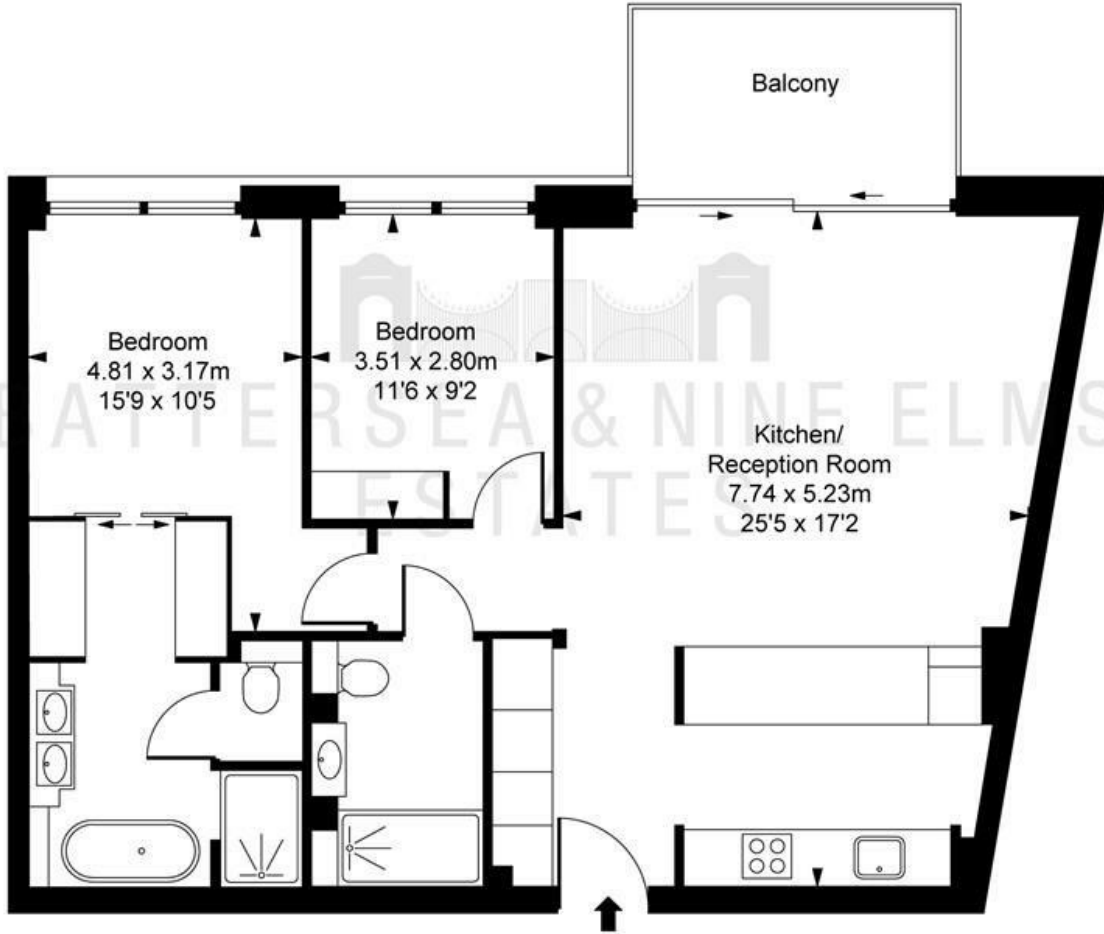


ILLUSTRATION FOR IDENTIFICATION PURPOSES ONLY
ALL MEASUREMENTS AND AREA FIGURES SUPPLIED BY OTHERS, ACCURACY IS NOT GUARANTEED.
THIS PLAN MUST NOT BE REPRODUCED BY ANY OTHER PERSON WITHOUT PERMISSION

These particulars, whilst believed to be accurate are set out as a general outline only for guidance and do not constitute any part of an offer or contract. Intending purchasers should not rely on them as statements of representation of fact, but must satisfy themselves by inspection or otherwise as to their accuracy. No person in this firm's employment has the authority to make or give any representation or warranty in respect of the property.

