



Chipstead Gardens, NW2

£600,000

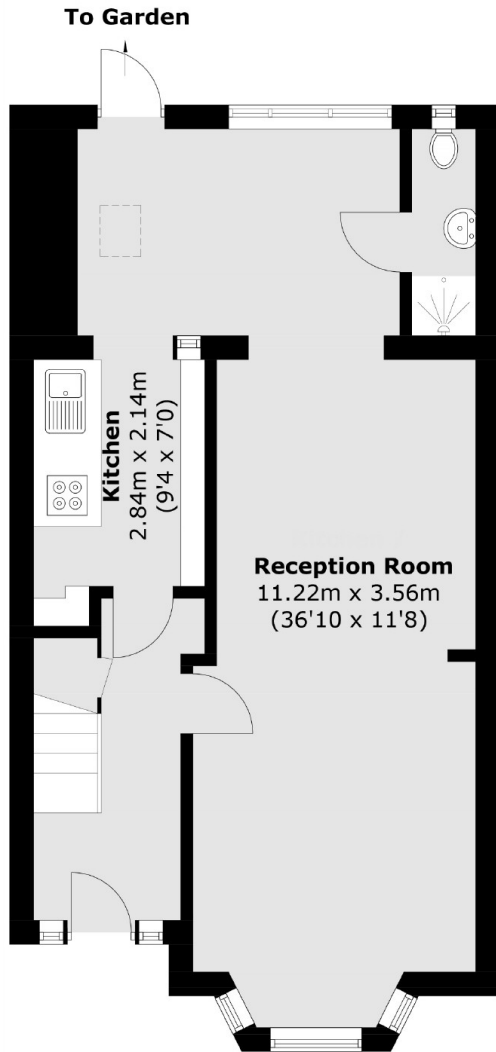
This 1930's built terraced house offers great space with potential to extend. The house currently has a spacious double reception leading to a separate dining room and kitchen, a guest shower room, three bedrooms and a family bathroom.

The property is situated less than half a mile from the newly opened Brent Cross West Station, providing direct connections to Farringdon in approximately 12 minutes. Brent Cross Shopping Centre is also within easy reach, along with excellent road links via the A406, A41, and M1, offering convenient access across London and beyond.

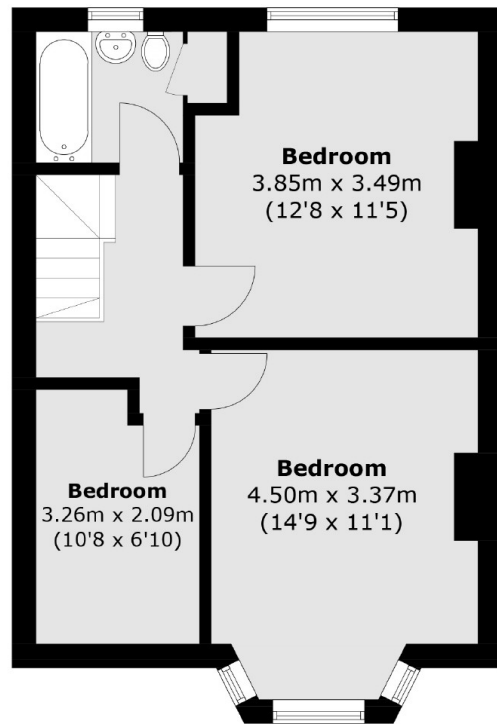
Features

- Three Bedrooms
- Two bathrooms
- Private Garden
- Terraced House
- Potential to Extend
- Private Driveway

Chipstead Gardens, London, NW2



Ground Floor



First Floor

Total area (approx.): 101.5 sq. m (1,092.5 sq. ft)