



W WESTWOODLEBER

W WESTWOODLEBER
LET US GUIDE YOU HOME

, Epping Green, Epping, CM16 6PU
£1,650,000



, Epping Green, Epping, CM16 6PU

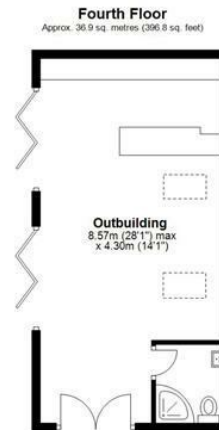
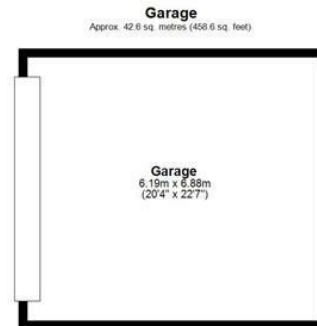
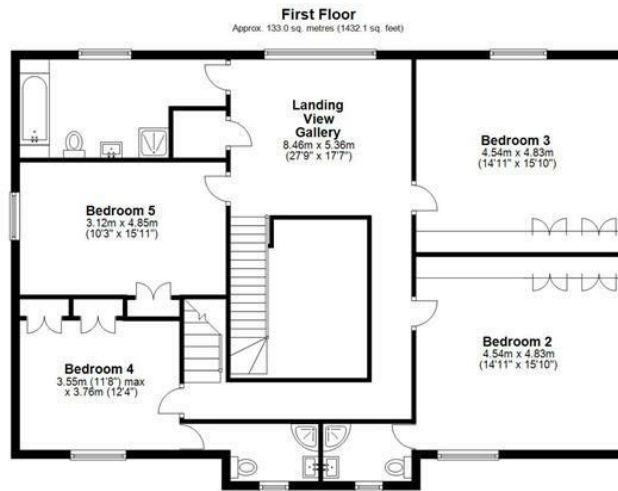
Westwood Leber is delighted to bring to the market this large, stunning executive detached family home in the sought-after and upmarket village of Epping Green. The property offers over 5,000 square feet of accommodation spread over three floors and has been built to an incredibly high specification. It features five double bedrooms, a magnificent kitchen/diner/breakfast/entertainment room with twin bi-fold full-length sliding doors, five reception rooms plus a viewing gallery, four bath/shower rooms, a utility room, and a downstairs cloakroom. Additionally, the current owners have built a fantastic detached outbuilding in keeping with the main house, complete with vaulted ceilings, currently set up as an amazing bar and entertainment space.

Externally, this luxurious property is set within a generous, private gated plot. At the front, an electric security gate leads to a driveway with parking for 4–5 cars, as well as a double garage with light, power, and an electric sectional roller shutter door. The garden is a magnificent feature of this home, benefiting from beautifully landscaped outdoor space, mainly laid to lawn, with a large patio terrace connecting the main accommodation to the outbuilding and a private hot tub corner.



W WESTWOODLEBER

W WESTWOODLEBER
LET US GUIDE YOU HOME



Total area: approx. 485.4 sq. metres (5225.1 sq. feet)

THE FLOORPLAN IS FOR ILLUSTRATIVE PURPOSES ONLY AND IS NOT TO SCALE. Measurements and features are approximate and may differ from the actual property. Verify all details independently, no liability is accepted for errors or omissions.

Property marketing provided by www.livemarketing.co.uk











WL WESTWOODLEBER

WL WESTWOODLEBER
LET US GUIDE YOU HOME