



London Road, Ewell Village

Epsom, Surrey, KT17 2BE

# London Road

Ewell Village, Epsom

NO ONWARD CHAIN – A well loved, superb and most handsome three bedroom detached family home with driveway, garage and stunning rear garden, offering excellent potential to modernise to taste and to extend to side and rear (STPP). Features two reception rooms, fitted kitchen and bright, spacious accommodation throughout.

Council Tax band: F

Tenure: Freehold

- Handsome & characterful detached family home
- Three bedrooms
- No onward chain
- Two reception rooms
- Stunning private rear garden
- Scope to extend (STPP)
- Located within Ewell Village and a short walk from all amenities



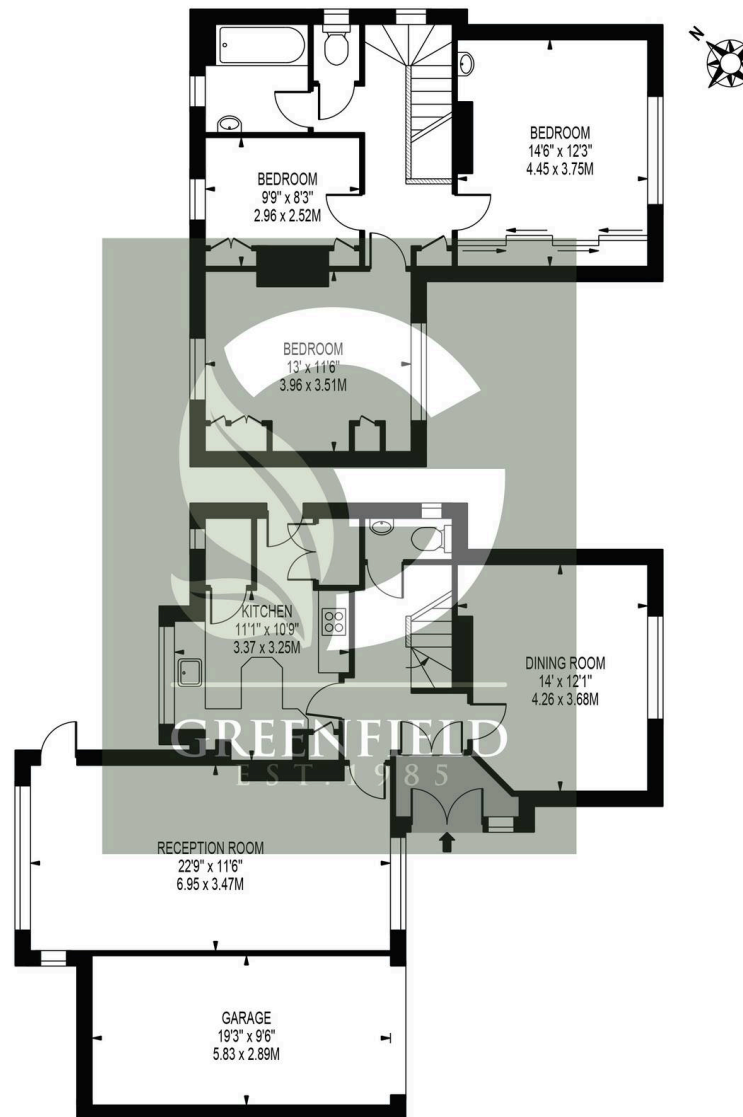




## LONDON ROAD

APPROXIMATE GROSS INTERNAL FLOOR AREA: **1309 SQ FT - 121.59 SQ M**  
(EXCLUDING GARAGE)

APPROXIMATE GROSS INTERNAL FLOOR AREA OF GARAGE: **181 SQ FT - 16.85 SQ M**



FOR ILLUSTRATION PURPOSES ONLY

THIS FLOOR PLAN SHOULD BE USED AS A GENERAL OUTLINE FOR GUIDANCE ONLY AND DOES NOT CONSTITUTE IN WHOLE OR IN PART AN OFFER OR CONTRACT.  
ANY INTENDING PURCHASER OR LESSEE SHOULD SATISFY THEMSELVES BY INSPECTION, SEARCHES, ENQUIRIES AND FULL SURVEY AS TO THE CORRECTNESS OF EACH STATEMENT.  
ANY AREAS, MEASUREMENTS OR DISTANCES QUOTED ARE APPROXIMATE AND SHOULD NOT BE USED TO VALUE A PROPERTY OR BE THE BASIS OF ANY SALE OR LET.



## Greenfield Estate Agents – Ewell Village

Greenfield Estate Agents 55 High Street, Epsom – KT17 1RX

02083930077 • [property@greenfieldewell.co.uk](mailto:property@greenfieldewell.co.uk) • [www.greenfieldewell.co.uk/](http://www.greenfieldewell.co.uk/)

