



**Cony Close
Cheshunt**



**£689,950
Freehold**

Stunning Four-Bedroom Family Home | Fully Renovated & Extended | Arranged Over Three Floors

This exceptional four-bedroom family home has been recently renovated and extended to an outstanding standard, offering a sleek, modern, and contemporary finish throughout.

The property boasts three beautifully appointed bathrooms, all finished with luxurious large-format marble-style tiling. At the heart of the home is an exquisite open-plan kitchen/dining room, featuring quartz worktops, integrated appliances, and striking feature cabinetry—perfect for both everyday living and entertaining.

The spacious lounge is a true highlight, complete with bi-folding doors, a bespoke media wall with a panoramic fire, and elegant inset lighting. A second reception room provides additional flexibility, while a practical utility/storage area (formerly the garage) enhances everyday convenience.

On the first floor, there are three well-proportioned bedrooms, two of which benefit from a stylish 'Jack and Jill' walk-in wardrobe. The family bathroom is designed in a luxurious hotel style, featuring a freestanding roll-top bath and striking gold fittings.

The entire second floor is dedicated to the impressive master suite, offering a Juliette balcony with views towards Goffs Oak, a sophisticated en-suite shower room, and a spacious walk-in wardrobe fitted with hanging rails and shelving.

Externally, the property continues to impress with a sun-trap patio, low-maintenance artificial lawn, and well-planned shrub and flower borders. To the front, there is a private driveway.

Ideally located to the west of Cheshunt, on the borders of Goffs Oak, this home sits within a pleasant no-through road and falls within a highly sought-after school catchment area.

- **Stunning four-bedroom family home arranged over three floors**
- **Recently renovated and extended to a high, modern specification**
- **Three luxurious bathrooms with large-format marble-style tiling**
 - **Impressive kitchen/dining room with quartz worktops and integrated appliances**
- **Spacious lounge with bi-folding doors, media wall, and panoramic fire**
 - **Additional second reception room for flexible living space**
 - **Three first-floor bedrooms, two with 'Jack and Jill' walk-in wardrobe**
 - **Ground Floor Under Floor Heating Throughout**
- **Top-floor master suite with Juliette balcony, en-suite, and walk-in wardrobe**
- **Private driveway, landscaped garden with patio, artificial lawn, and prime location near Goffs Oak in sought-after school catchment**

Front

Resin driveway with parking for two cars.

Covered Entrance

Composite leaded light double glazed entrance door to the:-

Hallway

Stairs to first floor with inset lighting. Inset spotlights. Large format porcelain tiled flooring. Wall panelling. Under floor heating. Cloaks cupboard under the stairs. Door to the:-

Second Reception Room/Play Room

Double glazed window to the front. Radiator. Large format porcelain tiled floor. Inset spotlights. Under floor heating.

Storage/Utility Room (Formerly the Garage)

Plumbing and space for washing machine and tumble drier. Work surface with cupboards over. Cloaks hanging space. Door to:-

Wet Room Shower/W.C.

Wall mounted W.C. with concealed cistern and concealed flush plate. Vanity bowl wash hand basin with mixer tap. Wall in shower cubicle with mixer valve, hand attachment and rain head. Extractor fan. Inset spotlights. Fitted mirror with inset LED lighting. Large format porcelain tiled flooring and walls. Hand attachment

Living Room

Metal Soho style entrance doors. Inset spotlights to ceiling. Inset feature LED lighting. Roof lantern. Aluminum bi-folding doors. Large format porcelain tiled flooring. Fireplace inset into a media wall with recess for a large television and panoramic fireplace. Opening to the:-

Kitchen/Dining Room

Double glazed aluminium French doors to the garden. Range of wall and base fitted gloss white units with quartz worktops with upstands and splash backs over incorporating an underslung 1 1/2 bowl. Induction hob with down draft extractor fan. Slimline wine cooler. Integrated dishwasher. Eye level oven and micro-combi oven with warming drawer under. Built in larder cupboard with worktop housing toaster and coffee maker. Integrated fridge and freezer. Pull out pots and pans cupboard. Inset spotlights to ceiling.

Landing

Inset spotlights to the ceiling. Dado rail. Stairs to second floor. Laminate wooden flooring. Doors to:-

Bedroom 2

Double glazed windows to the rear. Dado rail. Inset spotlights. Coving to ceiling. Laminate wooden floor.

Bedroom 3

Double glazed window to the front. Dado rail. Wall mounted column radiator. Coving to ceiling. Inset spotlights. Door to a Jack and Jill walk in wardrobe and storage area with inset spotlights, rails, shelving and chest of drawers. Laminate wooden flooring

Bedroom 4

Double glazed window to the rear. Radiator. Laminate wooden floor. Inset spotlights.

Bathroom

Opaque double glazed windows to the front. Suite comprising of a roll top bath with mixer tap and hand attachment. Wall hung W.C. with concealed cistern and push button flush. Countered wash hand basin with mixer tap. Feature LED mirror with demister pad. Gold towel radiator. Large format porcelain tiled floors and walls.

Second Floor Landing

Double glazed Velux window. Inset spotlights. Door to:-

Bedroom 1/Master Bedroom

Juliet Balcony double glazed doors and windows to the rear with lovely views. Feature column radiator. Inset spotlights. Laminate wooden floor. Doors to:-

Walk-in Dressing Room

Double glazed Velux window to the front. Built in storage, shelving, wardrobes and shoe space. Cupboard built into the eaves housing the boiler and hot water tank.

En-Suite Bathroom

Double glazed window to the rear. Wall hung W.C. Bidet tap. Gold towel radiator. Feature countered wash hand basin with mixer tap. Walk in shower cubicles with mixer valve, hand attachment, rain head. Inset spotlights. Feature niche. Large format porcelain tiled floor.

Garden

Large format porcelain tiled patio with steps down to an astro turf garden with shrub and flower borders. Lighting. Water tap.





JR Sales & L



JR Sales & L

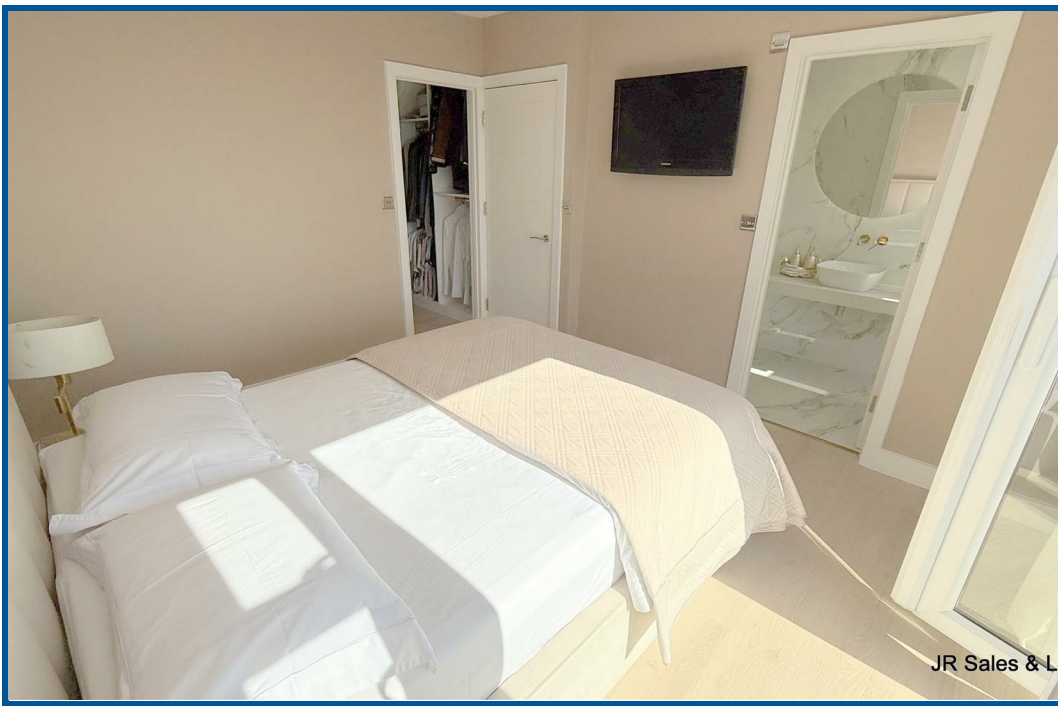


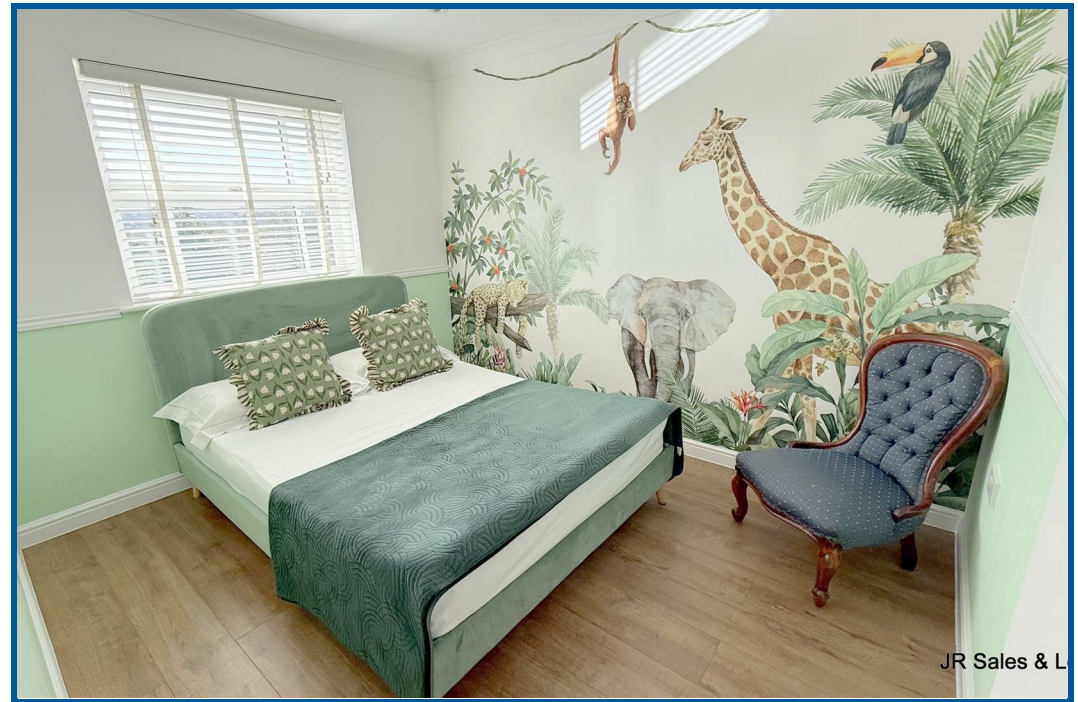
JR Sales & L

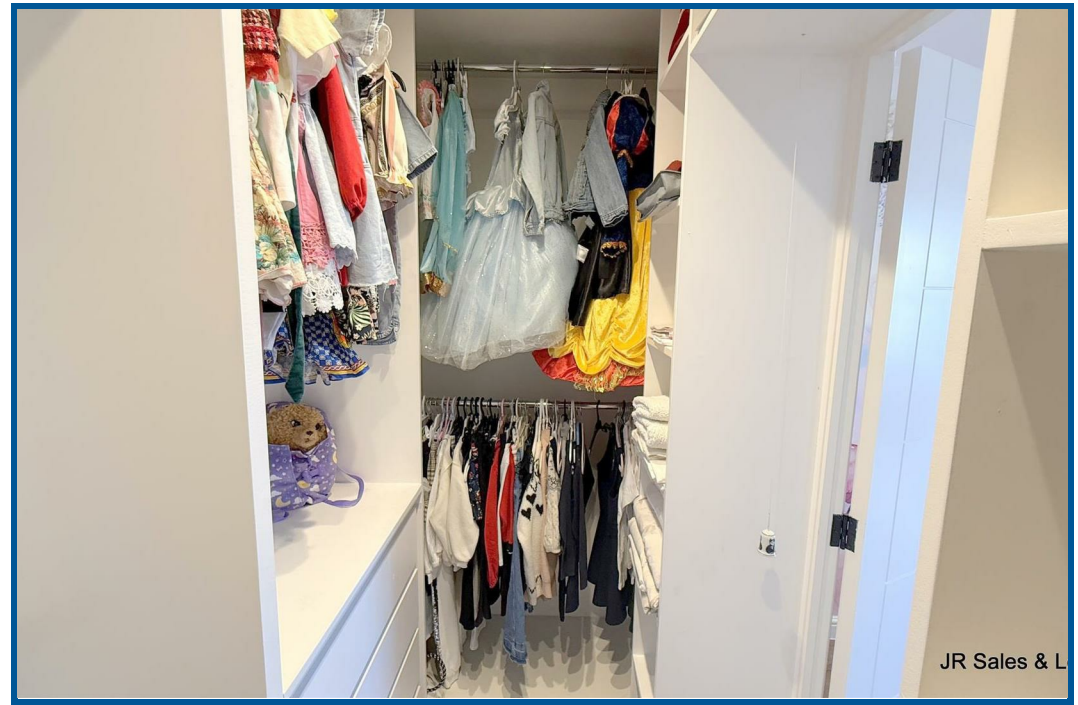


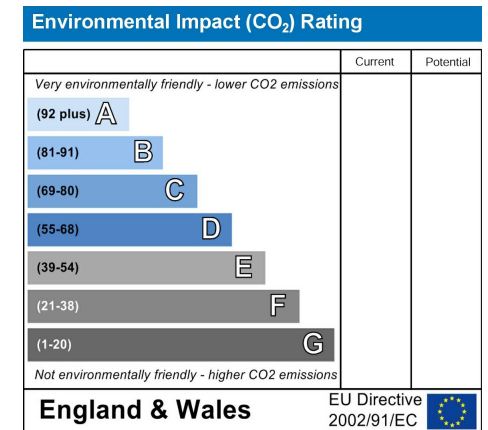
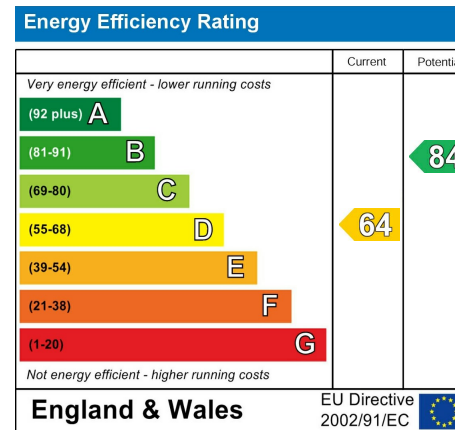
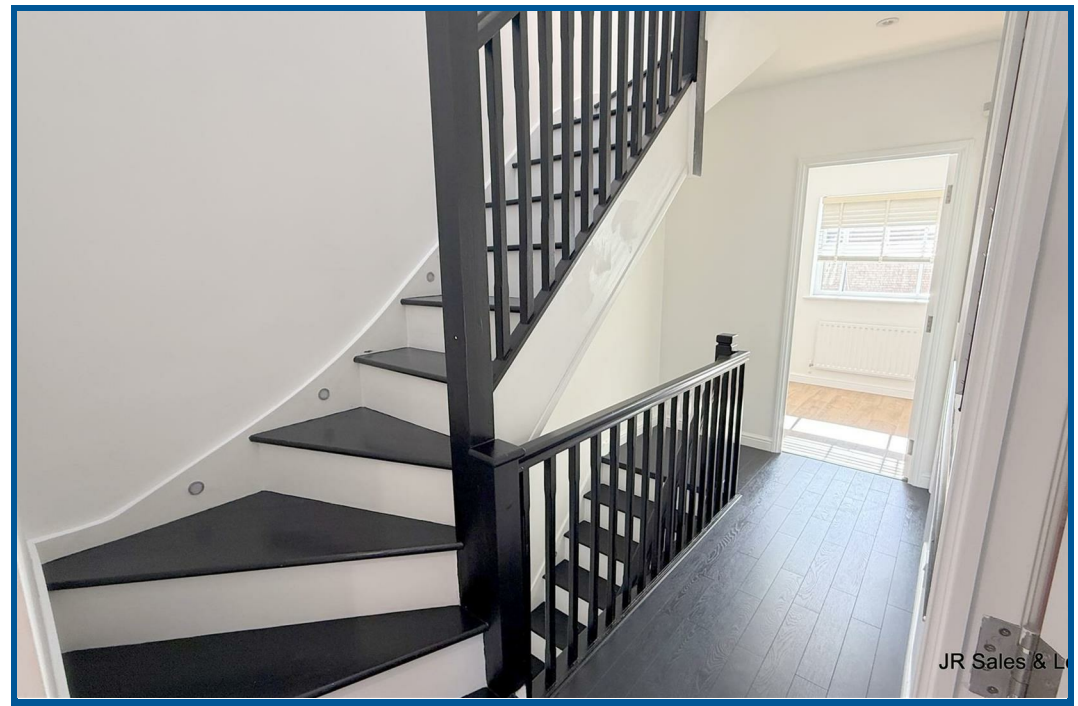
JR Sales & L

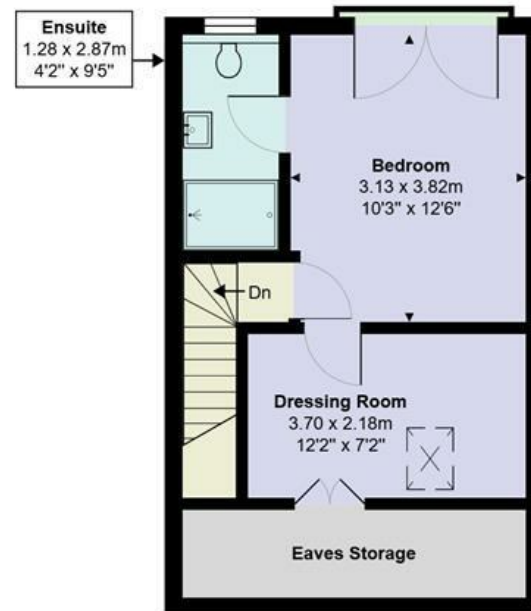
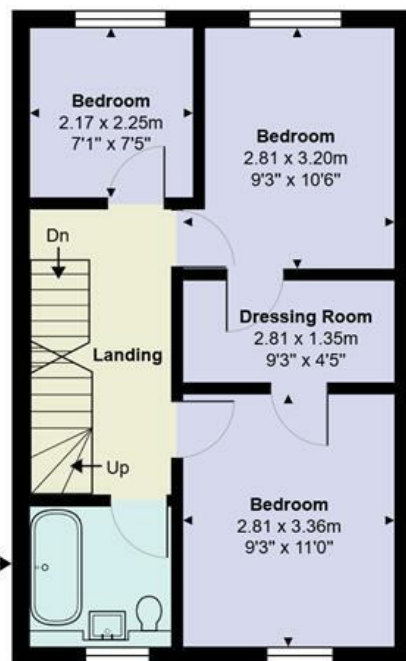












Cony Close, Cheshunt, EN7 6UW

Total Area: 149.9 m² ... 1614 ft²

All measurements are approximate and for display purposes only