



 litchfields

Highpoint, North Hill, Highgate Village N6

Share of Freehold

£950,000

 litchfields

44 Highgate High Street, Highgate Village, London, N6 5HX

020 8348 8000

highgate@litchfields.com

www.litchfields.com

Offices also in Hampstead Garden Suburb



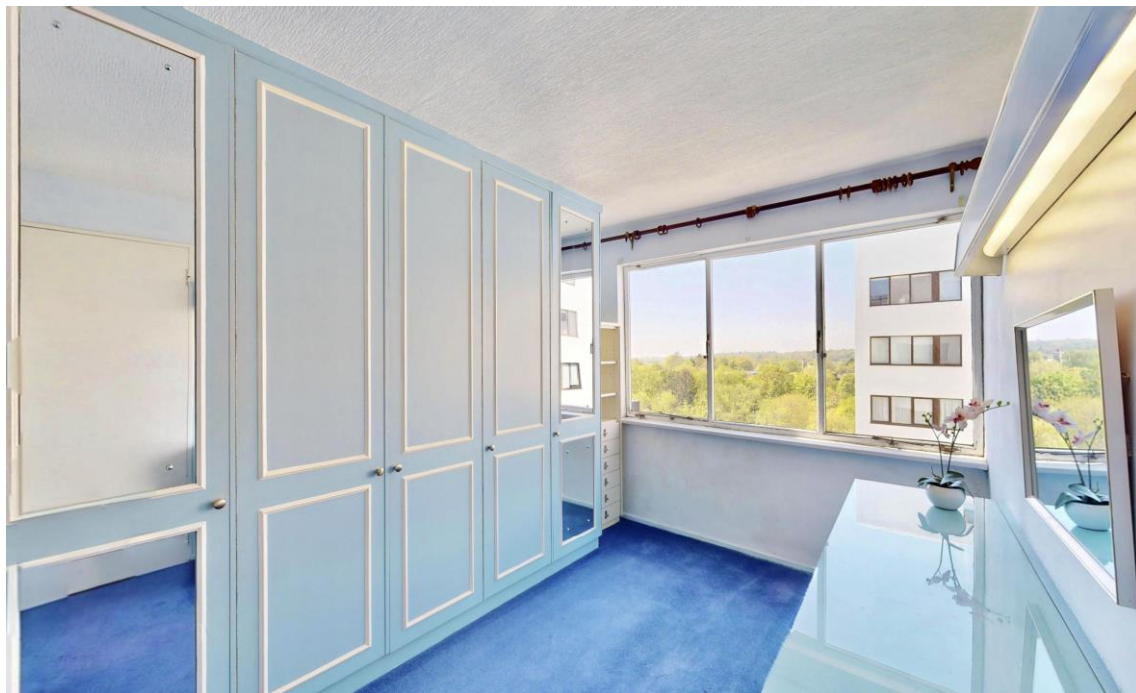
 litchfields

We are pleased to offer for sale a very spacious 3-bedroom apartment on the fifth floor (with lift) of this sought after landmark building. Designed by the pioneering architect Berthold Lubetkin, who founded the Tecton practice in the 1930s, this widely admired and innovative building is listed as Grade I by English Heritage in recognition of its status as one of the finest Modernist buildings in London (Le Corbusier, the visionary modernist architect and urban planner, described it as “an achievement of the first rank”). The spacious, light filled reception room offers lovely views into the tree line. There is a good size kitchen, separate dining-room, principal bedroom with a dressing room (formerly a third bedroom) and another double bedroom. Both the second bedroom and the dressing room offer far-reaching views to the West. Further benefits include a guest cloakroom, storage space, lock-up garage with off-street parking and the rare asset of a resident building manager, concierge and porter service. Additionally, there are expansive and beautifully maintained communal gardens, with 2 all-weather tennis courts, and a lovely, secluded, heated outdoor pool area. Highpoint is very conveniently located to allow fast access to Highgate tube and Woods, historic Highgate Village and Waterlow Park and the delights of Kenwood and the Heath. For further information on the history of the building please see: www.highpointn6.uk Offered for sale Chain Free with a Share of the Freehold. EPC- D



- Much admired Grade 1 listed Modernist apartment block
- Fifth floor (with lift)
- 31' reception
- 3 bedrooms
- Dining room
- Kitchen
- Bathroom
- Guest cloakroom
- Garage and off-street parking
- Resident building manager concierge & porter service
- Beautiful communal gardens, tennis courts and swimming pool
- Close to Village, tube, Woods and the Heath
- EPC- D





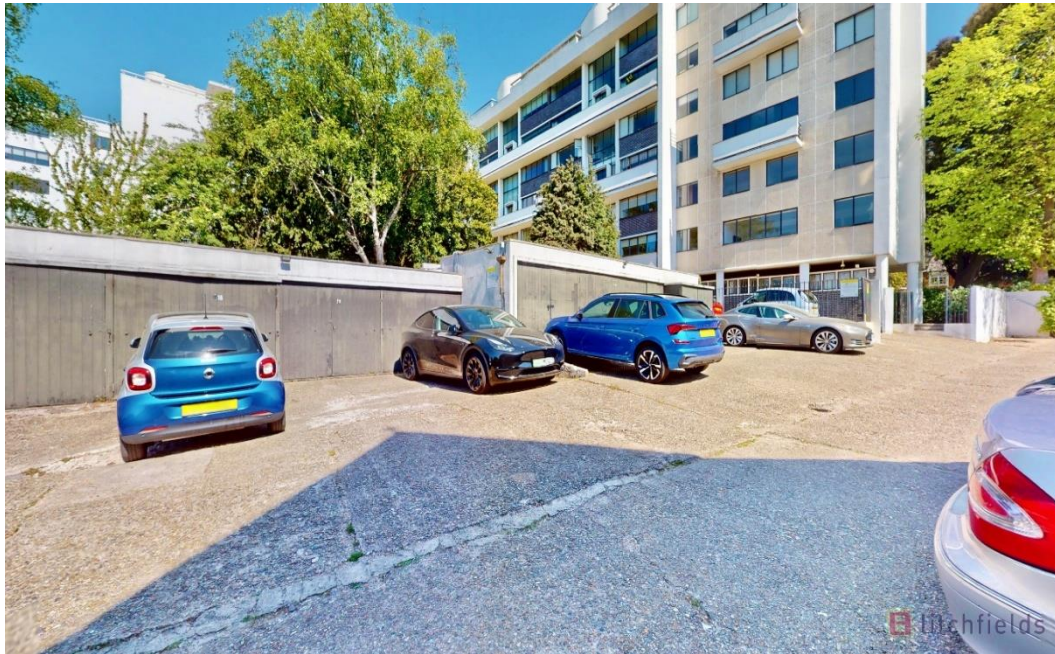








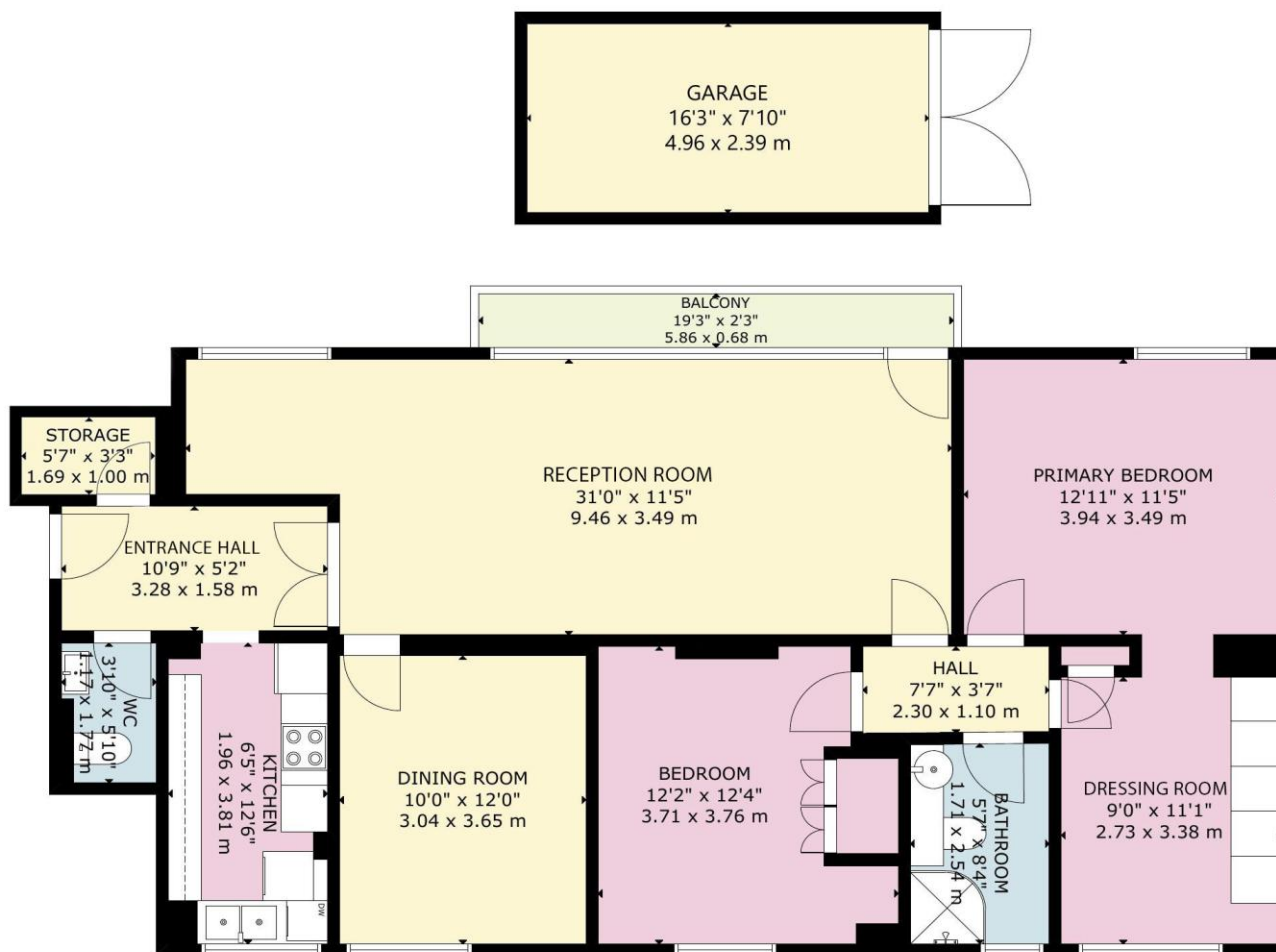
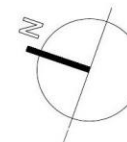
litchfields



litchfields



litchfields



GROSS INTERNAL AREA
TOTAL: 110 m²/1,179 sq ft
5TH FLOOR: 110 m²/1,179 sq ft
EXCLUDED AREAS: BALCONY: 4 m²/43 sq ft, GARAGE: 12 m²/128 sq ft
SIZE AND DIMENSIONS ARE APPROXIMATE, ACTUAL MAY VARY

5TH FLOOR



44 Highgate High Street, Highgate Village, London, N6 5HX

020 8348 8000

highgate@litchfields.com

www.litchfields.com

Offices also in Hampstead Garden Suburb

