

Lynhurst Crescent

Hillingdon • Middlesex • UB10 9EJ

Guide Price: £365,000



coopers
est 1986

Lynhurst Crescent

Hillingdon • Middlesex • UB10 9EJ

A spacious two bedroom first floor maisonette situated on a sought after residential road within the Oak Farm development offering easy access to a number of highly regarded local schools, numerous shops including Marks & Spencer, Hillingdon Metropolitan/Piccadilly line train station and the A40 with its links to London and the Home Counties. Generously proportioned with two double bedrooms the property comprises spacious central hallway with doors leading to the 16ft living room, 12ft kitchen, 12ft main bedroom, 13ft second bedroom and family bathroom. Outside there is a large south east facing garden which is mainly laid to lawn with a patio area to the rear.

Two bedroom maisonette

First floor

16ft living room

12ft kitchen

12ft main bedroom

13ft second bedroom

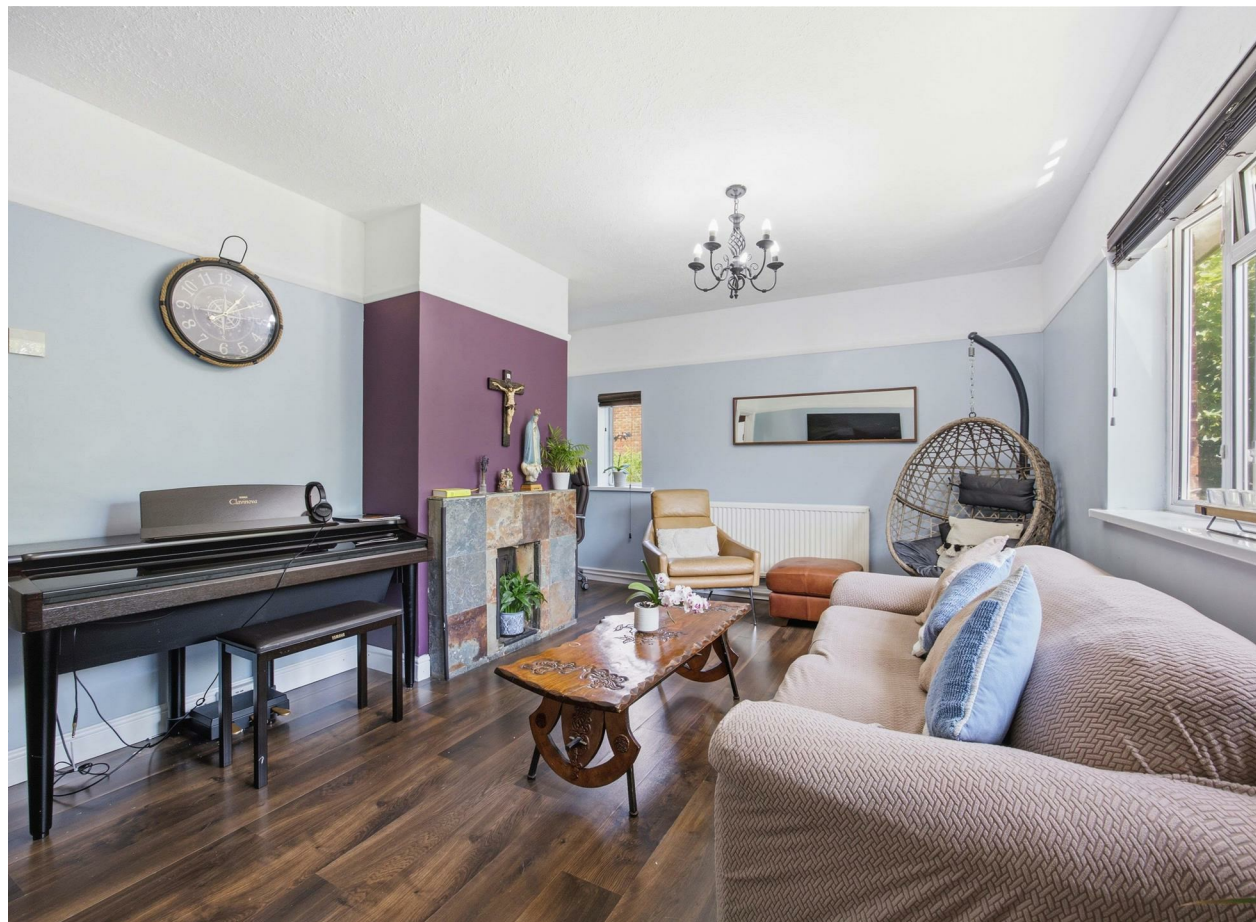
Modern family bathroom

Large private rear garden

Oak Farm

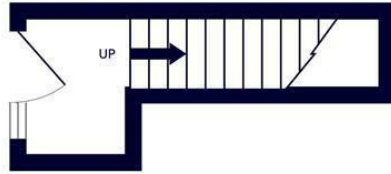
Great transport links

These particulars are intended as a guide and must not be relied upon as statements of fact. Your attention is drawn to the Important Notice on the last page.

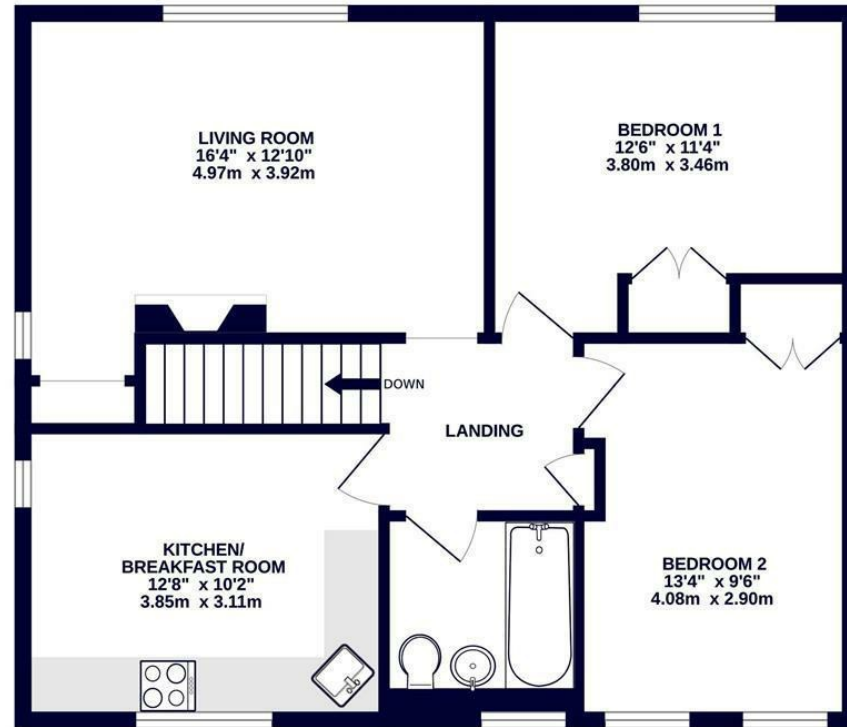




GROUND FLOOR
48 sq.ft. (4.4 sq.m.) approx.



1ST FLOOR
704 sq.ft. (65.4 sq.m.) approx.



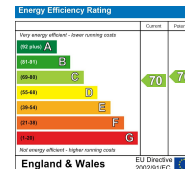
TOTAL FLOOR AREA : 752 sq.ft. (69.9 sq.m.) approx.

Whilst every attempt has been made to ensure the accuracy of the floorplan contained here, measurements of doors, windows, rooms and any other items are approximate and no responsibility is taken for any error, omission or mis-statement. This plan is for illustrative purposes only and should be used as such by any prospective purchaser. The services, systems and appliances shown have not been tested and no guarantee as to their operability or efficiency can be given.
Made with Metropix ©2026



109 Hillingdon Hill, Hillingdon Village,
Middlesex, UB10 0JQ
hillingdon@coopersresidential.co.uk

CoopersResidential.co.uk



Important Notice: These particulars, whilst believed to be accurate are set out as a general outline only for guidance and do not constitute any part of an offer or contract. Intending purchasers should not rely on them as statements or representation of fact, but must satisfy themselves by inspection or otherwise has the authority to make or give any representation or warranty in respect of the property.