

## Thurlow Hill, West Dulwich, SE21

2 bedroom flat - conversion for sale

£485,000

Leasehold

### Property Details

An immaculately presented two double bedroom garden apartment, set within an elegant semi-detached Victorian conversion, offering a turnkey finish throughout. The property has benefitted from a full internal redecoration completed in October 2025, alongside comprehensive fire safety upgrades carried out the same year. The accommodation is thoughtfully arranged, with a striking bay-fronted open-plan reception room to the front. Ornate corniced ceilings, a feature fireplace and original floorboards are complemented by a bay window with plantation shutters, creating an ideal dining space. A contemporary shaker-style kitchen runs neatly along one wall, providing a sociable and practical layout. To the rear, two generously sized double bedrooms are separated for privacy, both beautifully presented with corniced ceilings, soft carpeting and generous wardrobes, enjoying views over the garden. The stylish bathroom is finished with marbled tiling, fitted storage and a shower over the bath. Externally, the private gravelled garden is low maintenance and ideal for alfresco dining, with the added benefit of a cellar for storage.

### Features

- Two double bedrooms
- Private garden
- Semi-detached Victorian conversion
- Recently redecorated
- Dulwich Park and Brockwell Park nearby
- Two train stations around a nine-minute walk
- Amenities of West Dulwich and Tulse Hill a short stroll away
- Herne Hill and Dulwich Village within walking distance
- Chain-free

Council tax band C    EPC rating D (62)









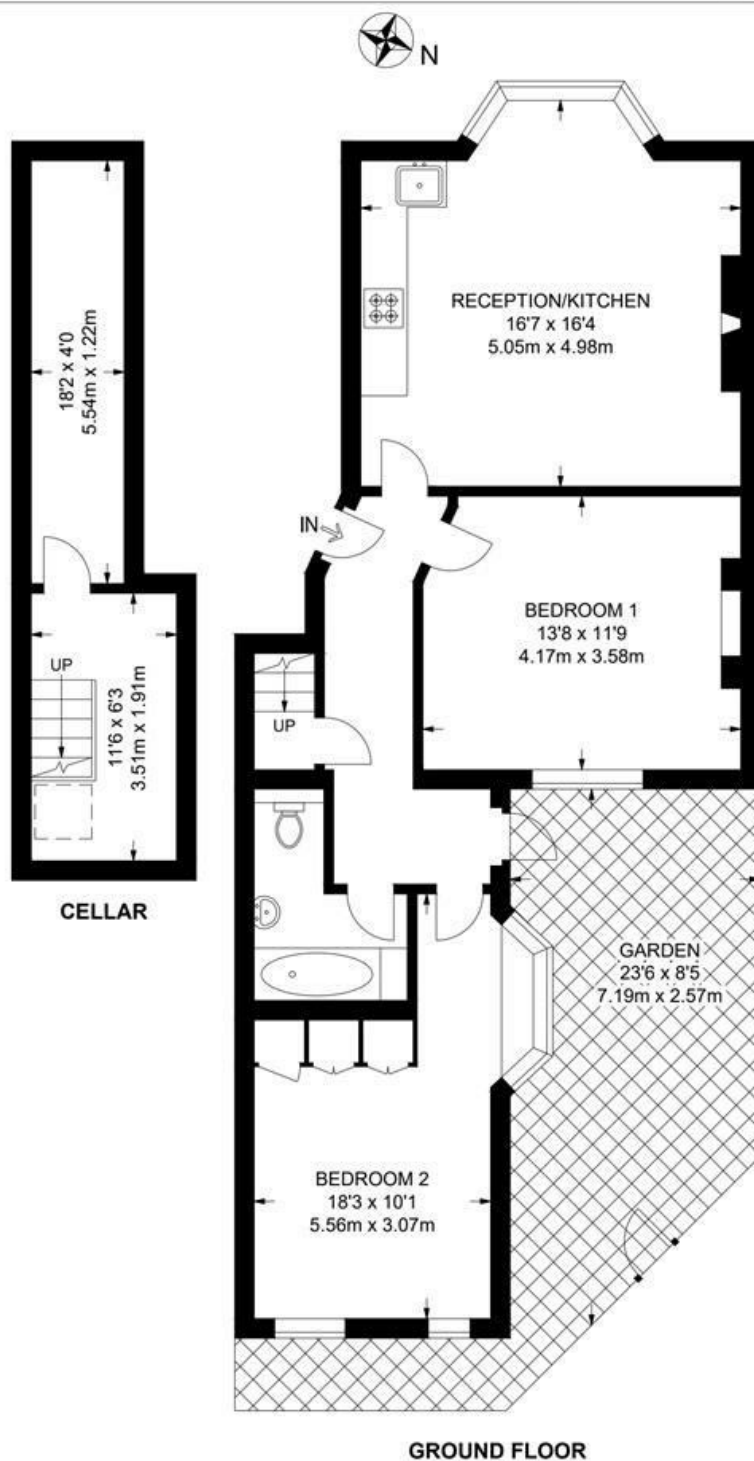
Thurlow Hill, West Dulwich, SE21

**Thurlow Hill, SE21**

**2 Bedroom Flat**

APPROXIMATE GROSS INTERNAL AREA WITH CELLAR: **870 SQ FT / 80.8 SQ M**

APPROXIMATE GROSS INTERNAL AREA WITHOUT CELLAR: **724 SQ FT / 67.2 SQ M**



While we try our very best, floor plans are produced as a guide only and we take no responsibility for the precise accuracy with which any property is represented.

Thurlow Hill, West Dulwich, SE21

