



## Streatham High Road, SW16

### £450,000

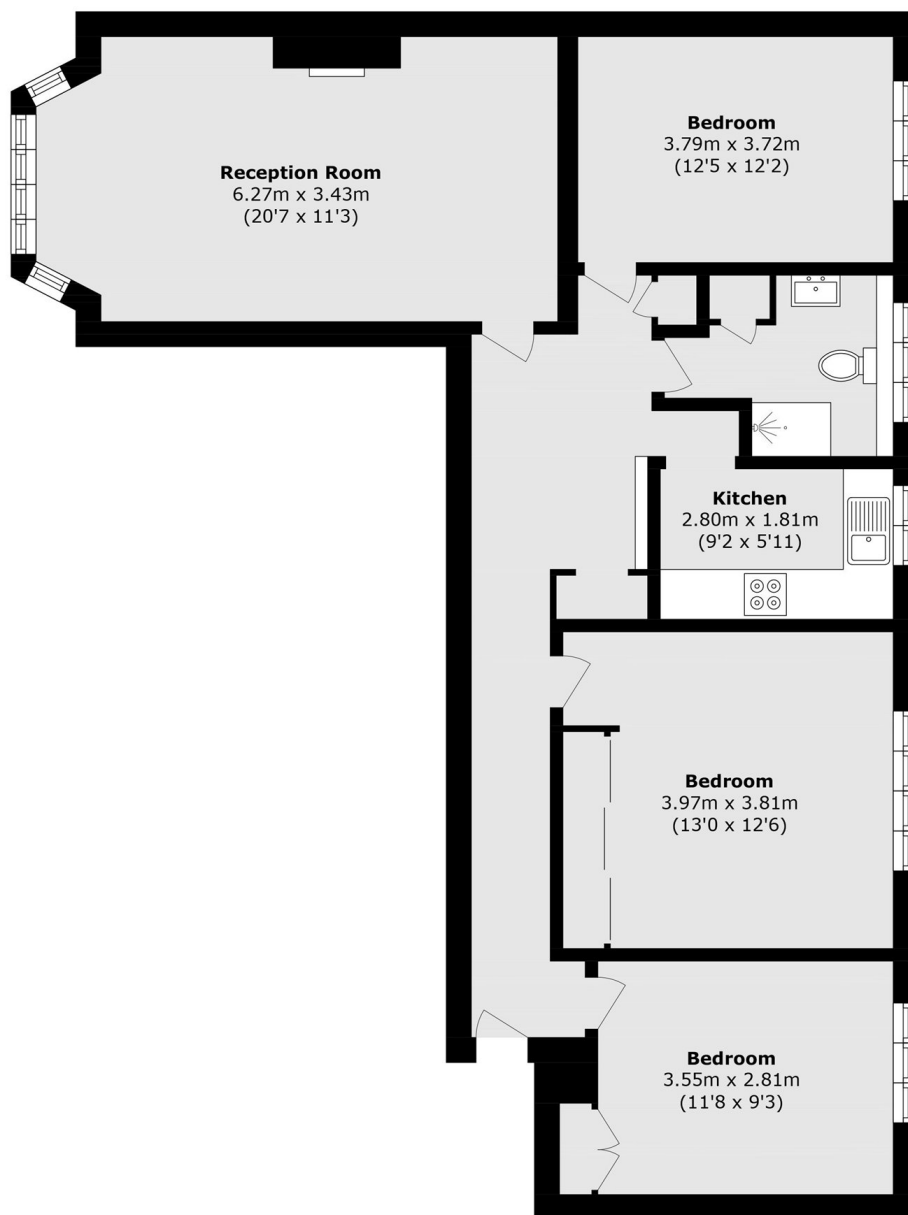
Enviably situated in a desirable mansion block in the heart of Streatham, this stunning three-double-bedroom apartment offers over 920 sq ft of generous living space. The property benefits from a separate kitchen and a large reception room, and is being offered to the market with no onward chain.

Perfectly positioned along Streatham High Road, The High is ideally located within close proximity to both Streatham Hill and Streatham mainline stations, as well as numerous bus routes, providing quick and easy access into Brixton.

### Features

- Three Double Bedrooms
- Separate Kitchen
- Communal Gardens
- Large Reception Room
- Over 920 Sq Ft
- Chain Free

# Streatham High Road, London, SW16



Total area (approx.): 85.6 sq. m (921.3 sq. ft)