



LEE WEBB

exp[®] UK

@ lee.webb@exp.uk.com

🌐 leewebb.exp.uk.com

☎ 07877 586 173

Severn Road, Gloucester, GL1 2LE

£300,000

🛏️ 2 🚿 2 🚗 1



Stunning Top Floor Split-Level Penthouse | North Point, Gloucester Docks | No Onward Chain | Allocated Parking

Located within the sought-after North Point development at the historic Gloucester Docks, this exceptional top floor split-level penthouse apartment offers stylish waterside living with spectacular views across one of the city's most iconic locations. Situated at the quieter end of the docks, the property enjoys a peaceful setting while remaining just moments from the vibrant heart of the waterfront.

Offered to the market with no onward chain, the apartment also benefits from allocated on-site parking, making it an ideal opportunity for both homeowners and investors alike.

Accessed via stairs or lift to the top floor, the apartment opens into a welcoming entrance hallway. On this level you will find two generous double bedrooms, including a principal bedroom with ensuite shower room. Both bedrooms enjoy direct access to a private balcony that stretches across the full width of the apartment, creating a wonderful space to enjoy the waterside surroundings. A modern family bathroom also serves this floor.

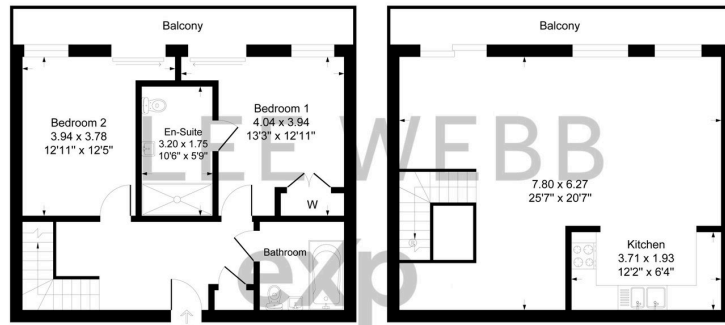
Stairs from the hallway lead to the impressive upper level, where the property truly comes into its own. Here you will find a bright and spacious open-plan kitchen, living and dining area, complemented by a dedicated study space, ideal for home working or reading. Large doors open onto a second full-width balcony, providing stunning elevated views and an ideal setting for relaxing or entertaining.

Gloucester Docks is one of the most historic and characterful waterfront locations in the country, with its beautifully restored Victorian warehouses, marina and waterside walks creating a unique and vibrant environment.

Just a short stroll away is Gloucester Quays, home to an excellent selection of designer outlet shops, cafés, bars and restaurants, as well as a cinema and regular food and seasonal markets, making this an incredibly desirable place to live.

This superb penthouse combines historic surroundings, modern





Ground Floor

First Floor

Illustration for identification purposes only, measurements are approximate, not to scale.

- Split Level Penthouse
- 2 Double Bedrooms
- En-Suite
- Allocated On Site Parking
- Large Balcony On Each Level
- No Onward Chain
- Located At Gloucester Docks
- Close To Bars And Restaurants

