

FLETCHERS

ESTATE AGENTS



Shepherds Bush Green, W12

£300,000

A well-presented purpose built flat in a desirable Art-Deco block positioned opposite Shepherd's Bush Green. Situated on the ground floor of the building the property comes complete with a large double bedroom, generous storage space and a spacious semi-open plan kitchen/reception room with large, feature 1930's style windows allowing for plenty of natural light.

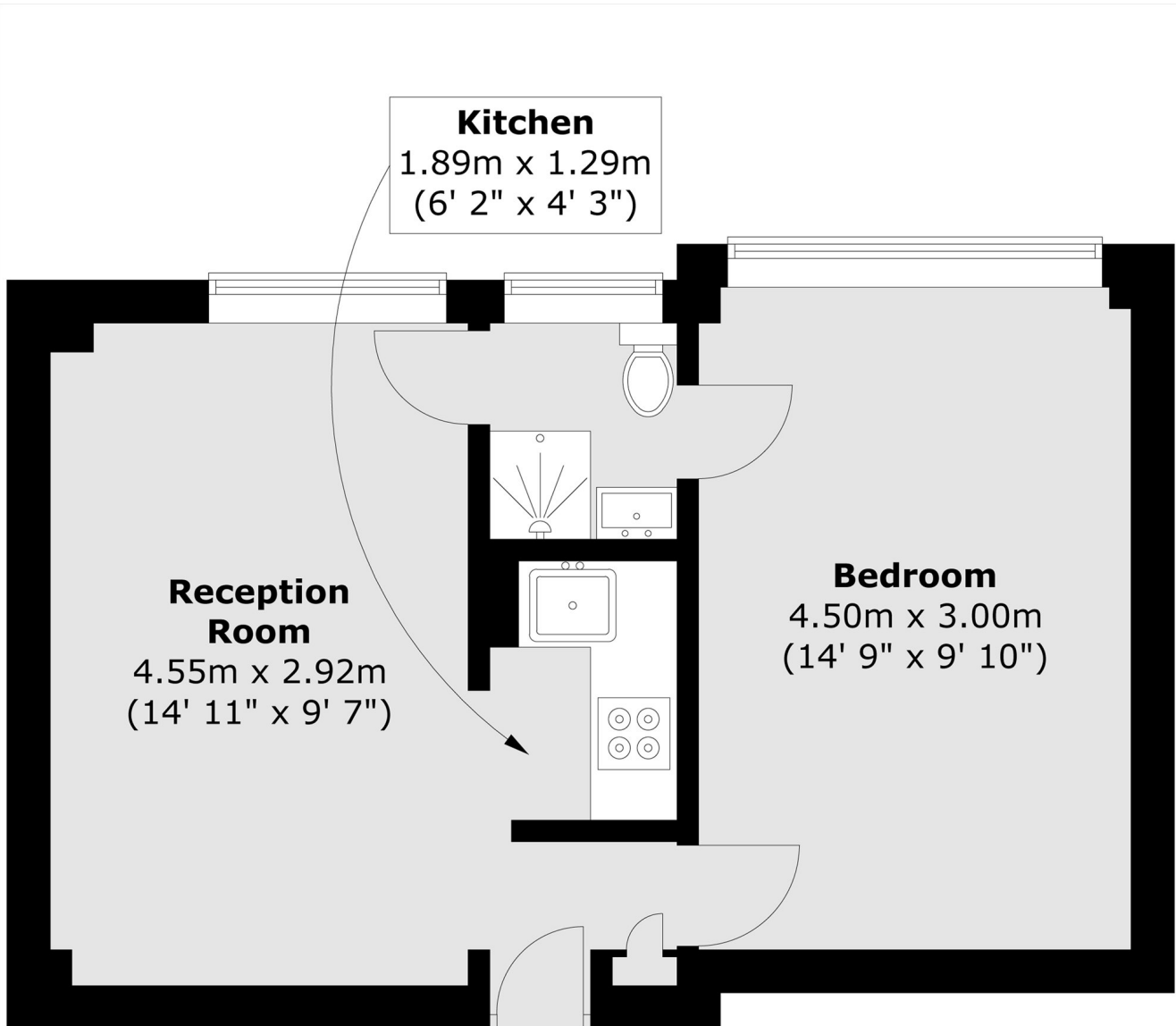
The property is offered to the market with a long lease and no onward chain. A must-see for first time buyers & investors alike offering excellent value for money in a central Shepherd's Bush location.

Romney Court is excellently located for easy access to the green spaces of Shepherd's Bush Green opposite the building and the plethora of amenities, bars and restaurants that Westfield Shopping Centre has to offer. It is also under quarter of a mile from Shepherds Bush Station (Central and Overground Lines) offering superb access in and out of the city.

- Large Double Bedroom • Excellent Condition • Lift Access • Central Location • Art-Deco Building • Excellent Transport Links •

FLETCHERS

ESTATE AGENTS



Total area (approx.) : 34.6 sq. m (372 sq. ft)

Fletchers Brook Green Sales
144 Shepherds Bush Road, Hammersmith, London, W6 7PB
020 7603 1415
brookgreensales@fletcherestates.com

Energy Rating: D. We aim to make our particulars both accurate and reliable. However they are not guaranteed; nor do they form part of an offer or contract. If you require clarification on any points then please contact us, especially if you're traveling some distance to view. Please note that appliances and heating systems have not been tested and therefore no warranties can be given as to their good working order.