





Property Description

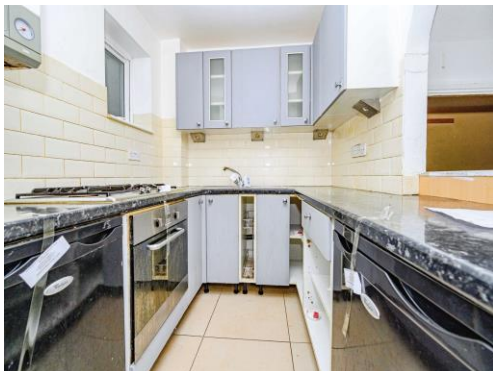
Located in a popular residential area, this one-bedroom cluster home is offered to the market with no onward chain, making it an ideal purchase for first-time buyers, investors, or those looking to downsize.

The property comprises of an entrance hall leading on to the living room, kitchen, under stairs storage cupboard and stairs leading to the first floor where you will find the bedroom with built in storage and a bathroom.

Externally, the property benefits from one allocated parking space, adding to its practicality.

Far End is located close by to the University of Hertfordshire, David Lloyd's leisure centre and the Galleria shopping centre which has an array of shops, restaurants and a cinema. It is also close by to the A1 (M) motorway and Hatfield train station giving direct access into Kings Cross.

Early viewing is highly recommended to fully appreciate what this property has to offer.



Hall

Lounge

12' 6" max x 9' 5" max (3.81m max x 2.87m max)

Kitchen

7' 2" max x 6' 3" max (2.18m max x 1.91m max)

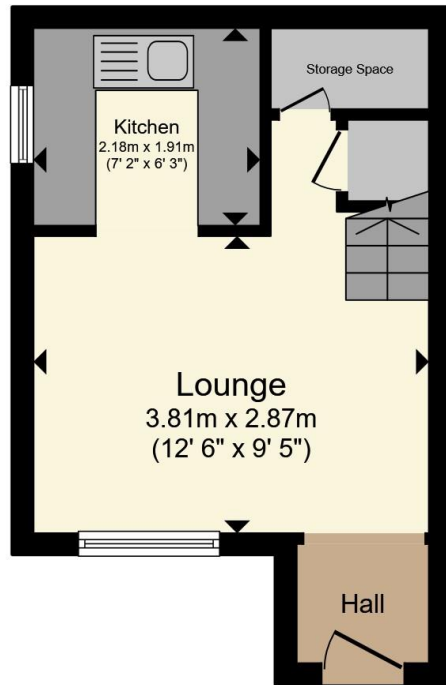
Bedroom

12' 7" max x 8' 9" max (3.84m max x 2.67m max)

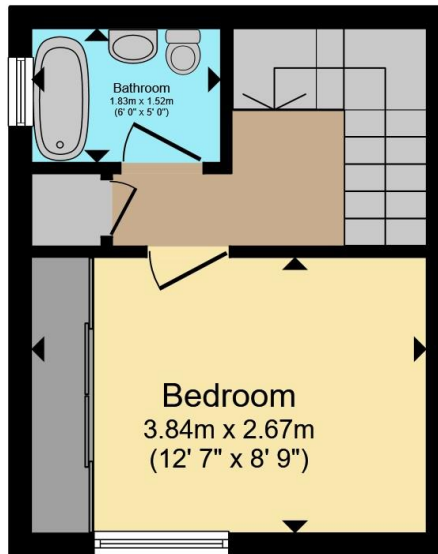
Bathroom

6' max x 5' max (1.83m max x 1.52m max)





Ground Floor



First Floor

Total floor area 38.7 m² (417 sq.ft.) approx

This floor plan is for illustrative purposes only. It is not drawn to scale. Any measurements, floor areas (including any total floor area), openings and orientation are approximate. No details are guaranteed, they cannot be relied upon for any purpose and they do not form part of any agreement. No liability is taken for any error, omission or misstatement. A party must rely upon its own inspection(s). Powered by www.propertybox.io

Connells



To view this property please contact Connells on

T 01727 851 100
E marshalswick@connells.co.uk

5 Wycombe Place The Quadrant Marshalswick
ST ALBANS AL4 9RH

EPC Rating: Council Tax
Awaited Band: C

view this property online connells.co.uk/Property/MWK306086

Tenure: Freehold



1. MONEY LAUNDERING REGULATIONS Intending purchasers will be asked to produce identification documentation at a later stage and we would ask for your co-operation in order that there will be no delay in agreeing the sale. 2. These particulars do not constitute part or all of an offer or contract. 3. The measurements indicated are supplied for guidance only and as such must be considered incorrect. Potential buyers are advised to recheck measurements before committing to any expense. 4. We have not tested any apparatus, equipment, fixtures, fittings or services and it is in the buyers interest to check the working condition of any appliances.

Connells Residential is registered in England and Wales under company number 1489613, Registered Office is Cumbria House, 16-20 Hockliffe Street, Leighton Buzzard, Bedfordshire, LU7 1GN. VAT Registration Number is 500 2481 05.

See all our properties at www.connells.co.uk | www.rightmove.co.uk | www.zoopla.co.uk

Property Ref: MWK306086 - 0002