



PUTTERILLS
est. 1992

Guide Price £675,000

Templewood, Welwyn Garden City, Hertfordshire,
AL8 7HS

PROPERTY SUMMARY

Upon entering, you are greeted by an inviting atmosphere that flows seamlessly through the ground floor. The two reception rooms provide versatile space, perfect for both relaxed family evenings and entertaining guests. The recent modernisation ensures that every corner of this home feels fresh, stylish, and ready for immediate occupation, with high-quality finishes and a neutral décor palette that will appeal to a wide range of tastes.

The heart of any home, the kitchen, has been updated to a high standard, offering a functional and aesthetically pleasing space for culinary pursuits. Adjacent to the main living areas, the thoughtful extension enhances the property's footprint, potentially offering an additional dining area, a study, or a sunroom, adding significant value and flexibility to the living accommodation.

Ascending to the first floor, you will find three well-proportioned bedrooms and a family bathroom, providing comfortable retreats for all family members.

Externally, the semi-detached nature of the property often provides the benefit of a private garden, perfect for outdoor relaxation, al fresco dining, or for children to play.







PUTTERILLS
— est. 1992 —



















Templewood, AL8

Approximate Area = 116.78 sq m / 1257 sq ft

LOCAL AUTHORITY
Welwyn Hatfield

TENURE
Leasehold

COUNCIL TAX BAND
F

VIEWINGS
By prior appointment only

EPC
C

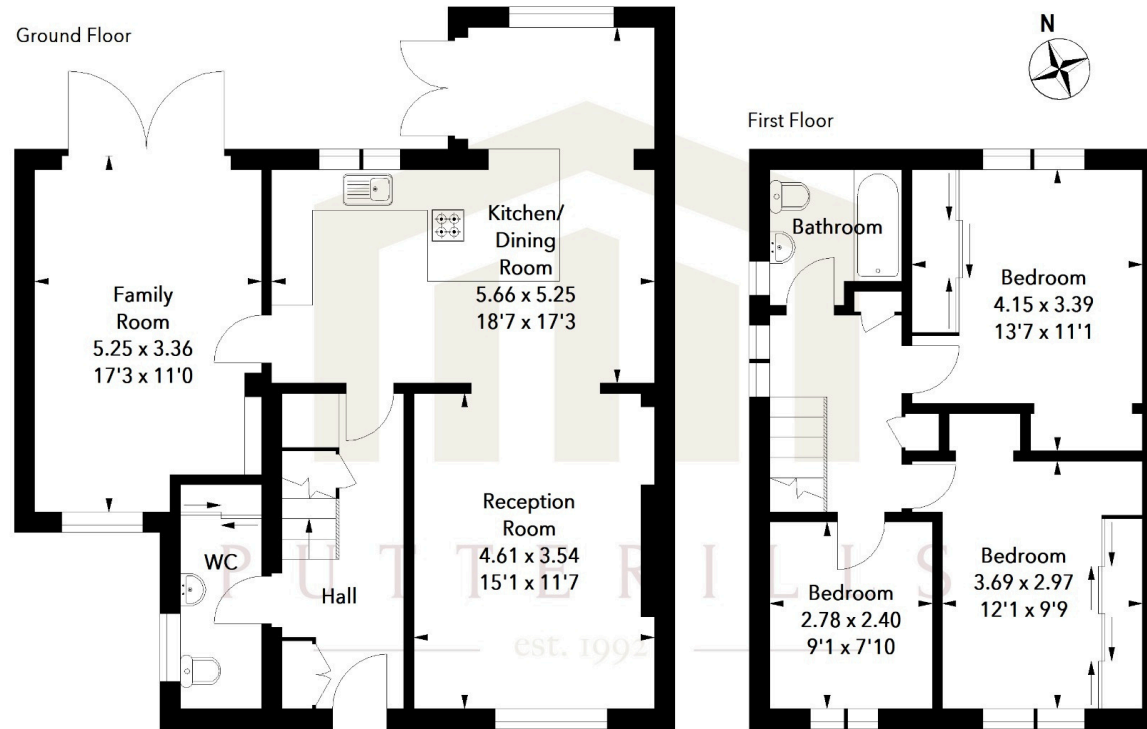


Illustration For Identification Purposes Only.
All measurements and areas are approximate, not to scale.
© Orange Tree Photography

Agents Note: Whilst every care has been taken to prepare these particulars, they are for guidance purposes only. All measurements are approximate and are for general guidance purposes only and whilst every care has been taken to ensure their accuracy, they should not be relied upon and potential buyers/tenants are advised to recheck the measurements



OFFICE ADDRESS
Putterills Welwyn
Garden City
34 Wigmores North,
Hertfordshire, AL8 6PH

CONTACT DETAILS

01707 393333
wgc@putterills.co.uk
www.putterills.co.uk