

## St. Margarets Road, TW1

### £299,950

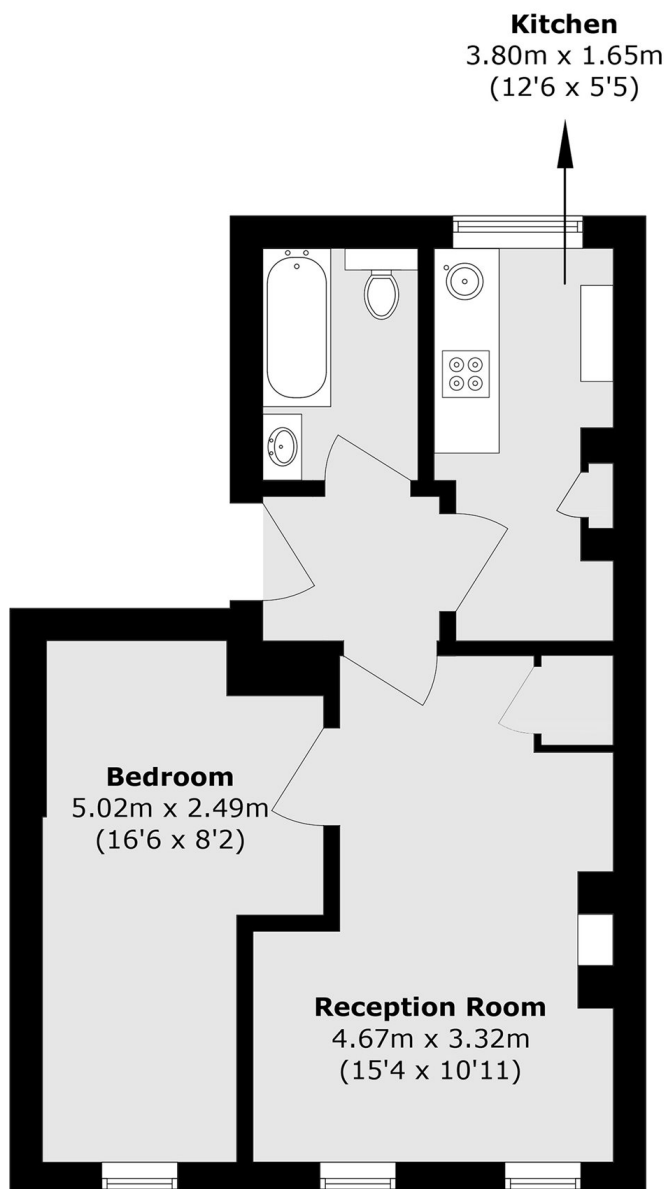
A bright and well-arranged first floor one bedroom apartment set within an attractive Victorian conversion in the heart of St Margarets village. The property features high ceilings, double-glazed front windows and a rare separate kitchen, giving the home a more traditional and practical layout than most flats at this size. There is also a double bedroom, a neutral bathroom and scope to modernise and make it your own.

Perfectly positioned for village living, the flat is moments from cafés, shops, restaurants and riverside walks. Marble Hill Park, Moor Mead Park and the River Thames are all close by with Richmond easily reached on foot. St Margarets Station is just 0.2 miles away and the property offers excellent road connections via the A316, M3, M25. A well-located home ideal for first-time buyers, commuters, pied-à-terre owners and buy-to-let investors.

### Features

Victorian Conversion  
First Floor  
One Bedroom  
High Ceilings  
Well-Presented  
Fantastic Location

# St. Margarets Road, St Margarets, TW1



Total area (approx.): 37.0 sq. m (398.3 sq. ft)

## Dexters

St Margarets  
1 Chertsey Road  
St Margarets  
TW1 1LR  
Sales  
020 8744 9400

Energy Rating: D. We aim to make our particulars both accurate and reliable. However they are not guaranteed; nor do they form part of an offer or contract. If you require clarification on any points then please contact us, especially if you're traveling some distance to view. Please note that appliances and heating systems have not been tested and therefore no warranties can be given as to their good working order.

 **RICS** | Regulated  
Estate Agent  
and Letting Agent

[dexters.co.uk](https://www.dexters.co.uk)