

Great Cumberland Place, London, W1H

£1,150 per week - Unfurnished

Fees apply, please refer to our Tenant Guide for details

CLUTTONS



 Bedrooms: 2

 Bathrooms: 2

 Receptions: 1

This modern maisonette comprises 2 double bedroom with fitted in wardrobes, 2 bathrooms (2 en suite), 1 w/c, large reception room with fully equipped kitchen and plenty of storage.

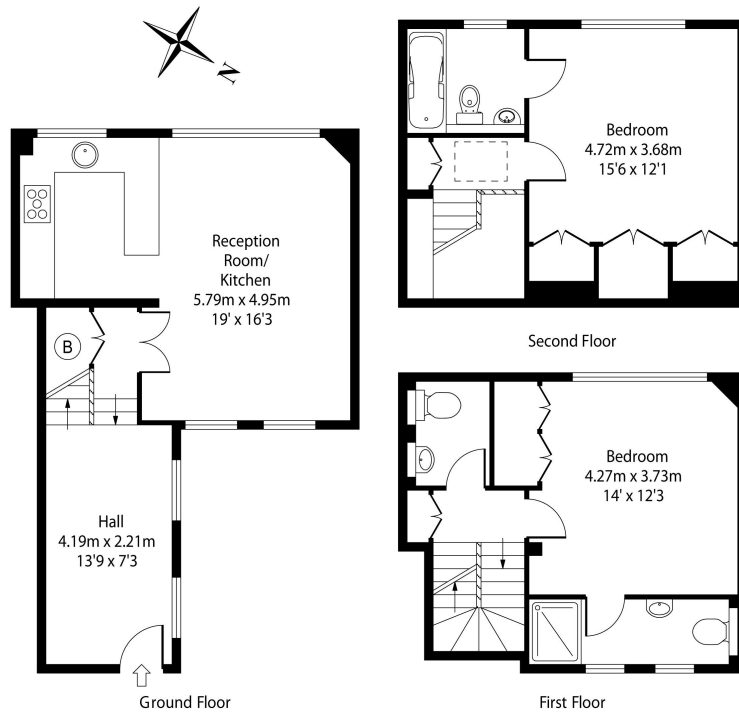
The property is located moments from Hyde Park and Marble Arch Station (Central Line).

TAX BAND : F

EPC : C

Deposit : Equivalent of 5 weeks rent

- 2 bedroom, 2 bathroom, 1 w/c
- Maisonette
- Unfurnished
- Spacious
- Moments from Hyde Park



FLAT 3, GREAT CUMBERLAND PLACE

APPROX. GROSS INTERNAL FLOOR AREA 960 SQ FT / 89.18 SQ M

FLOOR PLAN FOR IDENTIFICATION PURPOSES ONLY- NOT TO SCALE
Compliant with RICS code of measuring practise.
Copyright Click & Plan

Approximate gross internal area: 960 sq ft (89 sq m)

EPC rating: C

For further details contact

Hyde Park
+44 (0)20 7262 6767
hydepark@cluttons.com

This is made from FSC® certified paper, part of our commitment to use more sustainable materials. FSC®, protecting the world's forests for the future. Please recycle.



Cluttons Hyde Park
23 Albion Street
London
W2 2AS

Cluttons LLP for itself and as agent for the vendor or lessor (as appropriate) gives notice that: 1. These particulars are only a general outline for the guidance of intending purchasers or lessees and do not constitute in whole or in part an offer or a Contract. 2. Reasonable endeavours have been made to ensure that the information given in these particulars is materially correct but any intending purchaser or lessee should satisfy themselves by inspection, searches, enquiries and survey as to the correctness of each statement. 3. All statements in these particulars are made without responsibility on the part of Cluttons LLP or the vendor or lessor. 4. No statement in these particulars is to be relied upon as a statement or representation of fact. 5. Neither Cluttons LLP nor anyone in its employment or acting on its behalf has authority to make any representation or warranty in relation to this property. 6. Nothing in these particulars shall be deemed to be a statement that the property is in good repair or condition or otherwise nor that any services or facilities are in good working order. 7. Photographs may show only certain parts and aspects of the property at the time when the photographs were taken and you should rely upon actual inspection. 8. No assumption should be made in respect of parts of the property not shown in photographs. 9. Any areas, measurements or distances are only approximate. 10. Any reference to alterations or use is not intended to be a statement that any necessary planning, building regulation, listed building or any other consent has been obtained. 11. Amounts quoted are exclusive of VAT if applicable.