



Hillview, SW20

£995,000

A three bedroom well presented family home in this popular area of West Wimbledon. The property comes with off-street parking, a south-facing garden, and is available with no onward chain.

Hillview is a short walk from Raynes Park Station with its quick connections into London. A wide selection of shops, restaurants, pubs and a Waitrose also a short away.

Features

- Three Bedrooms
- Well Presented Throughout
- No Onward Chain
- Panoramic Views
- Large Reception Room
- Off Street Parking



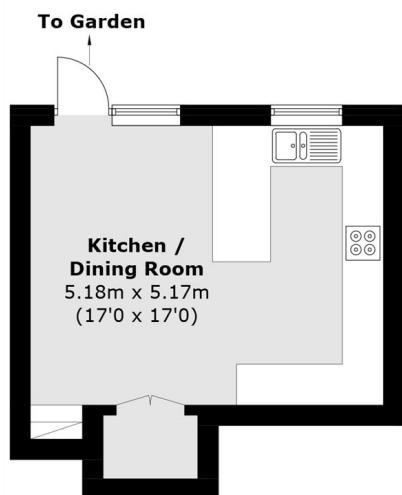
Hillview, SW20

The house is arranged over three floors. On the lower ground floor there is a kitchen/dining room that opens onto the garden. The upper ground floor has an integrated garage, utility room, separate WC and a reception room with panoramic views.

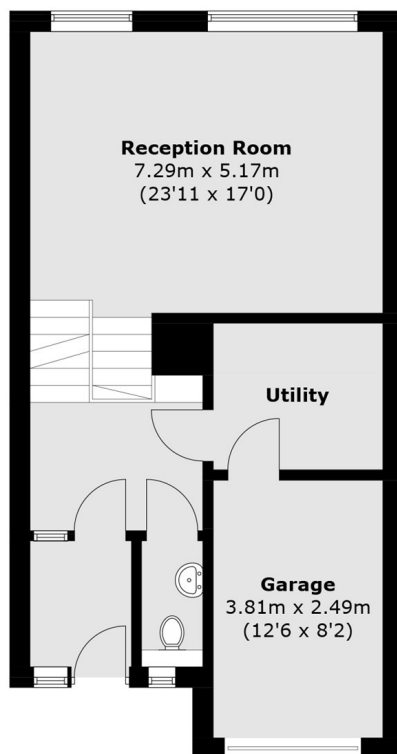
Upstairs there are three bedrooms, the main bedroom has an en-suite and built-in storage, and there is an additional shower room.



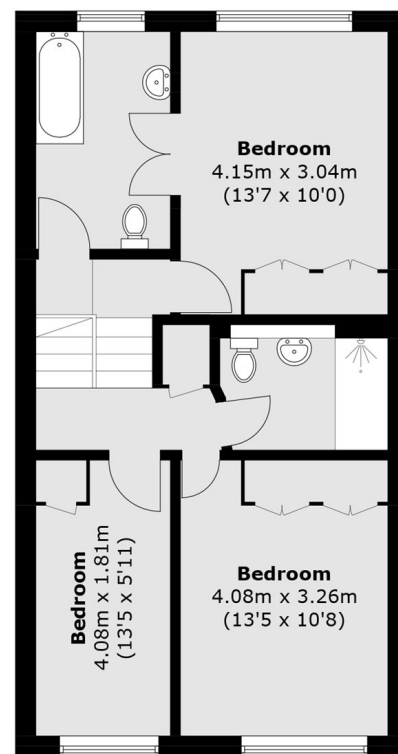
Hillview, London, SW20



Lower Ground Floor



Upper Ground Floor



First Floor

Total area (approx.): 127.5 sq. m (1,372.4 sq. ft)
(Including Garage)