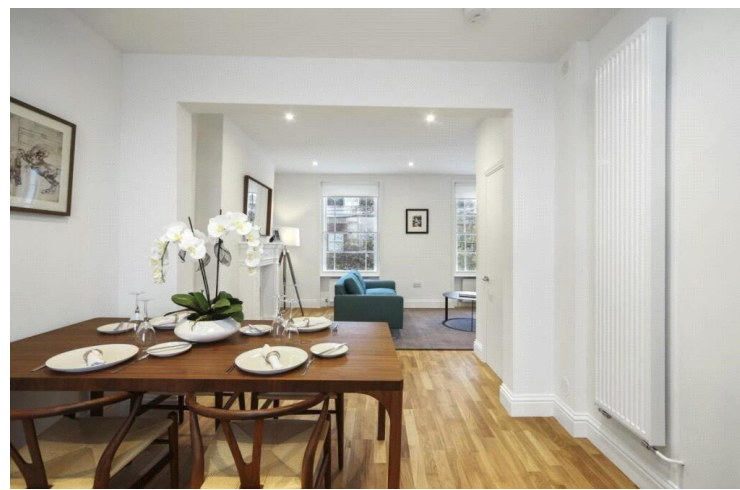
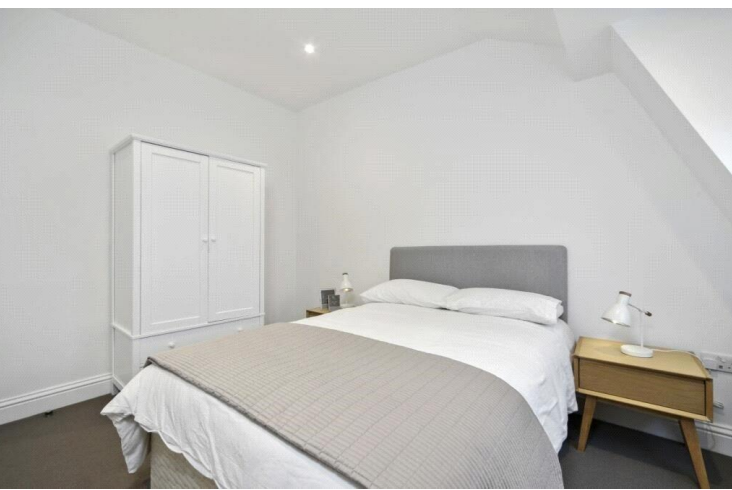




Kings Road
Chelsea, SW3

CHESTERTONS





A beautiful, bright, and immaculately presented duplex apartment set within this highly sought-after location.

The property is flooded with natural light throughout, creating a wonderfully airy and welcoming atmosphere. It further benefits from attractive wood flooring and generous proportions across both levels, offering flexible and well-balanced living and entertaining space.

Finished to a high standard, this spacious apartment combines style and comfort, making it an ideal home for those seeking a well-appointed residence in a popular and convenient setting.

- Prime location
- Two bedrooms
- Modern
- Built in storage
- Furnished

£4,375 pcm

Additional tenant charges apply (fees apply to non-AST tenancies only)

Tenancy Agreement Fee: £300

References per Tenant/Guarantor: £60

Inventory check (approx. £100 – £250 inc. VAT)

chestertons.co.uk/property-to-rent/applicable-fees

Energy Efficiency Rating		
Very energy efficient - lower running costs	Current	Potential
94-100 A		
81-93 B		
69-80 C		
55-68 D	66	73
39-54 E		
21-38 F		
1-20 G		
Not energy efficient - higher running costs		
England, Scotland & Wales EU Directive 2002/91/EC		

Minimum Term: 12 months
Deposit Required: Five weeks
Local Authority: Royal Borough of Kensington and Chelsea
Council Tax Band: E
EPC Rating: C
Furnished

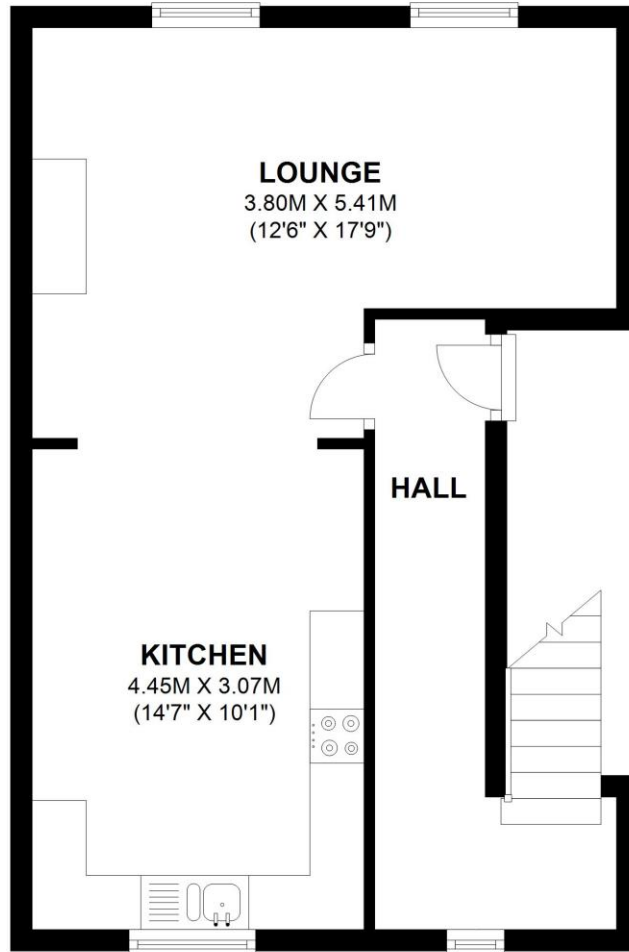
Chestertons Chelsea Lettings

17 Cale Street
 London
 SW3 3QR

chelsealettingsusers@chestertons.co.uk
 02075944750
chestertons.co.uk

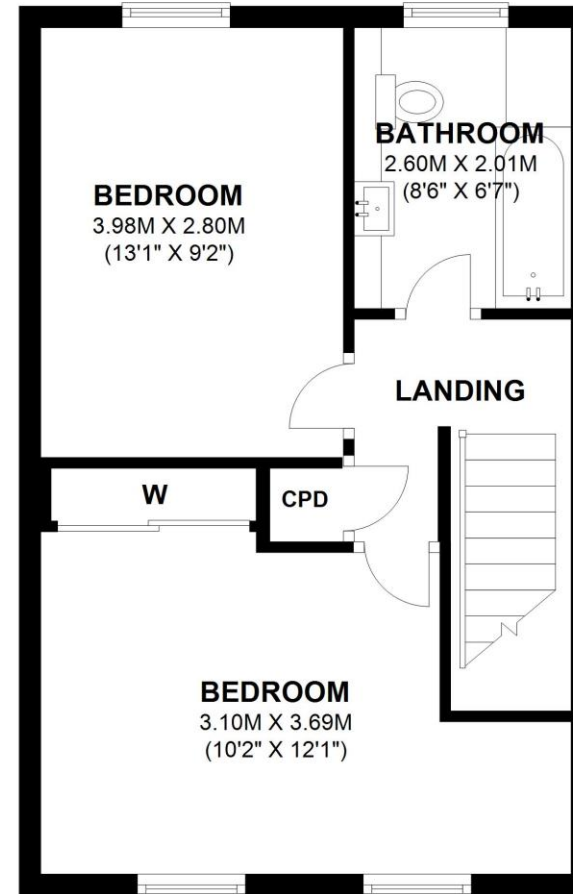
SECOND FLOOR

APPROX. 39.7 SQ. METRES (426.9 SQ. FEET)



THIRD FLOOR

APPROX. 38.4 SQ. METRES (413.5 SQ. FEET)



TOTAL AREA: APPROX. 78.1 SQ. METRES (840.4 SQ. FEET)

Chesterton UK Services Limited trading as Chestertons for themselves and for the vendor of this property whose agents they are, give notice that (i) these particulars do not constitute any part of an offer or contract, (ii) all statements contained within these particulars are made without responsibility on the part of Chestertons or the vendor, (iii) whilst made in good faith, none of the statements contained within these particulars are to be relied upon as a statement or representation of fact, (iv) any intending purchasers must satisfy themselves by inspection or otherwise as to the correctness of each of the statements contained within these particulars, (v) the vendor does not make or give either Chestertons or any person in their employment any authority to make or give representation or warranty whatsoever in relation to this property. Wide angle lenses may be used. ©Copyright Chestertons | Chesterton Global Ltd | Registered Office 40 Connaught Street, Hyde Park, London W2 2AB Registered Company Number 05334580.



This paper is
100% recyclable