



## 5 Whirlow Farm Mews

, Sheffield, S11 9QJ

£400,000



# 5 Whirlow Farm Mews



## Description

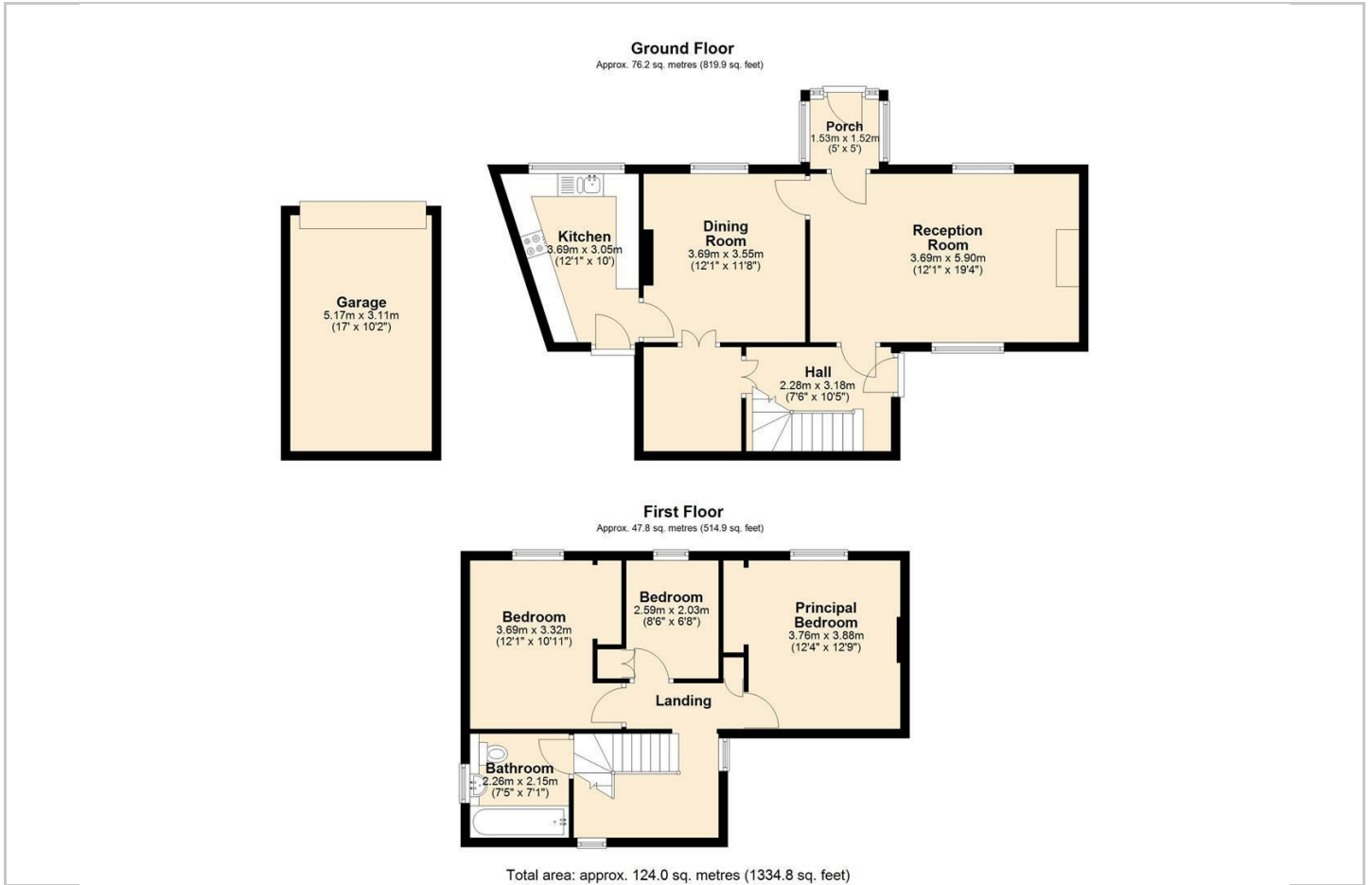
Nestled in the leafy suburb of Whirlow, this delightful stone-built mews cottage offers a perfect blend of period character and modern living. Dating back to circa 1850, the property provides well-proportioned accommodation including two reception rooms, along with the added benefits of a single garage and off-road parking for one vehicle.

- Three bedrooms, two of which are doubles with built in storage
- Single garage with parking available to the front
- Lovely front garden
- Historic 1850 build
- Close to Sheffield amenities and Ecclesall Woods
- Charming mews cottage
- Porch to front accessing the reception rooms
- No onward chain
- Located in Whirlow Farm Mews, close to open countryside
- Viewing recommended to appreciate the opportunity and potential

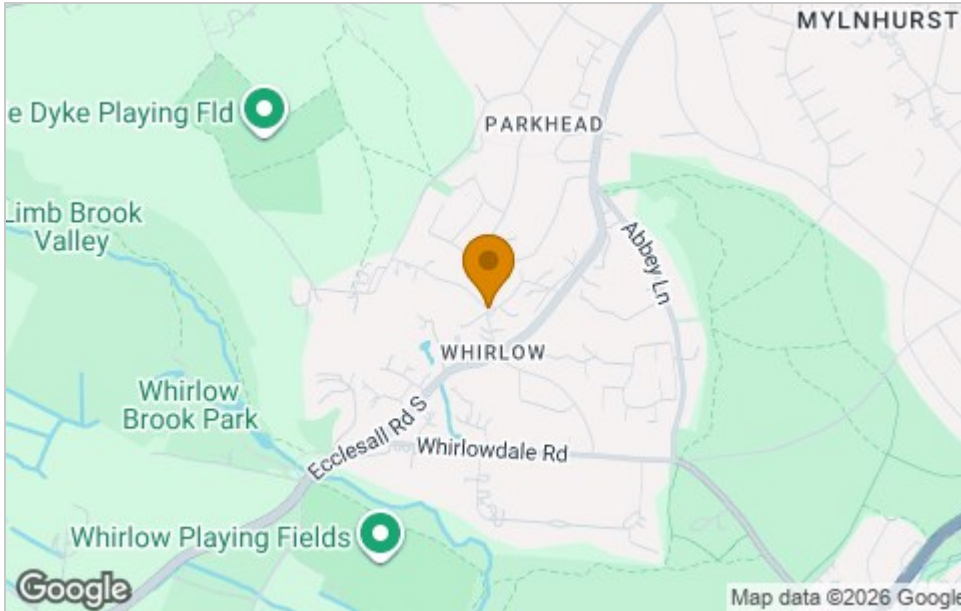




## Floor Plan



## Area Map



## Viewing

Please contact our ELR Banner Cross Office on 0114 268 3388 if you wish to arrange a viewing appointment for this property or require further information.

These particulars, whilst believed to be accurate are set out as a general outline only for guidance and do not constitute any part of an offer or contract. Intending purchasers should not rely on them as statements of representation of fact, but must satisfy themselves by inspection or otherwise as to their accuracy. No person in this firm's employment has the authority to make or give any representation or warranty in respect of the property.

Eadon Lockwood and Riddle, 888 Ecclesall Road, Sheffield, South Yorkshire, S11 8TP  
Tel: 0114 268 3388 Email: [bannercross@elr.co.uk](mailto:bannercross@elr.co.uk) <https://www.elr.co.uk>

## Energy Efficiency Graph

