



The Willows, Claygate

Claygate

In Excess of £425,000

newton
huxley.

14 The Willows Albany Crescent

Claygate, Esher

Immaculate 2-bed apartment in prime village location. Ensuite, residents' parking, communal gardens. Close to shops, rail station. Ideal blend of modern conveniences and tranquillity.
Council Tax band: D

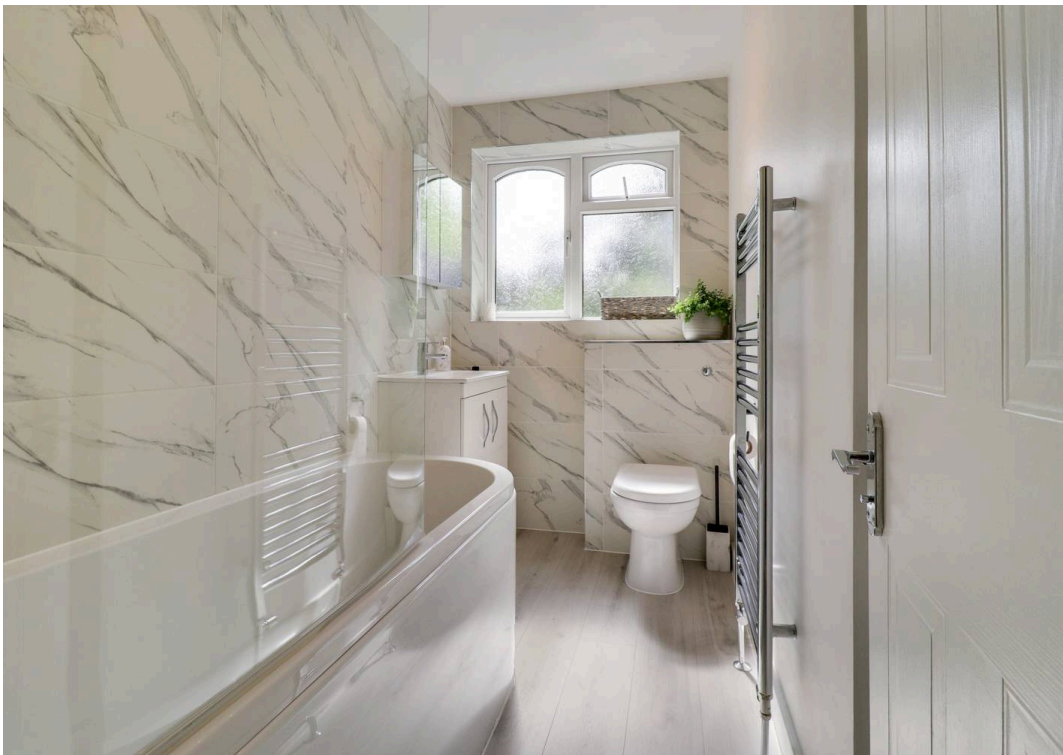
Tenure: Leasehold

EPC Energy Efficiency Rating: C

EPC Environmental Impact Rating: C

- Immaculately presented 2 bedroom apartment
- Prime village location
- Just yards away from shops / amenities and rail station
- Ensuite shower room
- Residents' parking
- Garage
- Lift Access
- Secure Entryphone System





The Willows

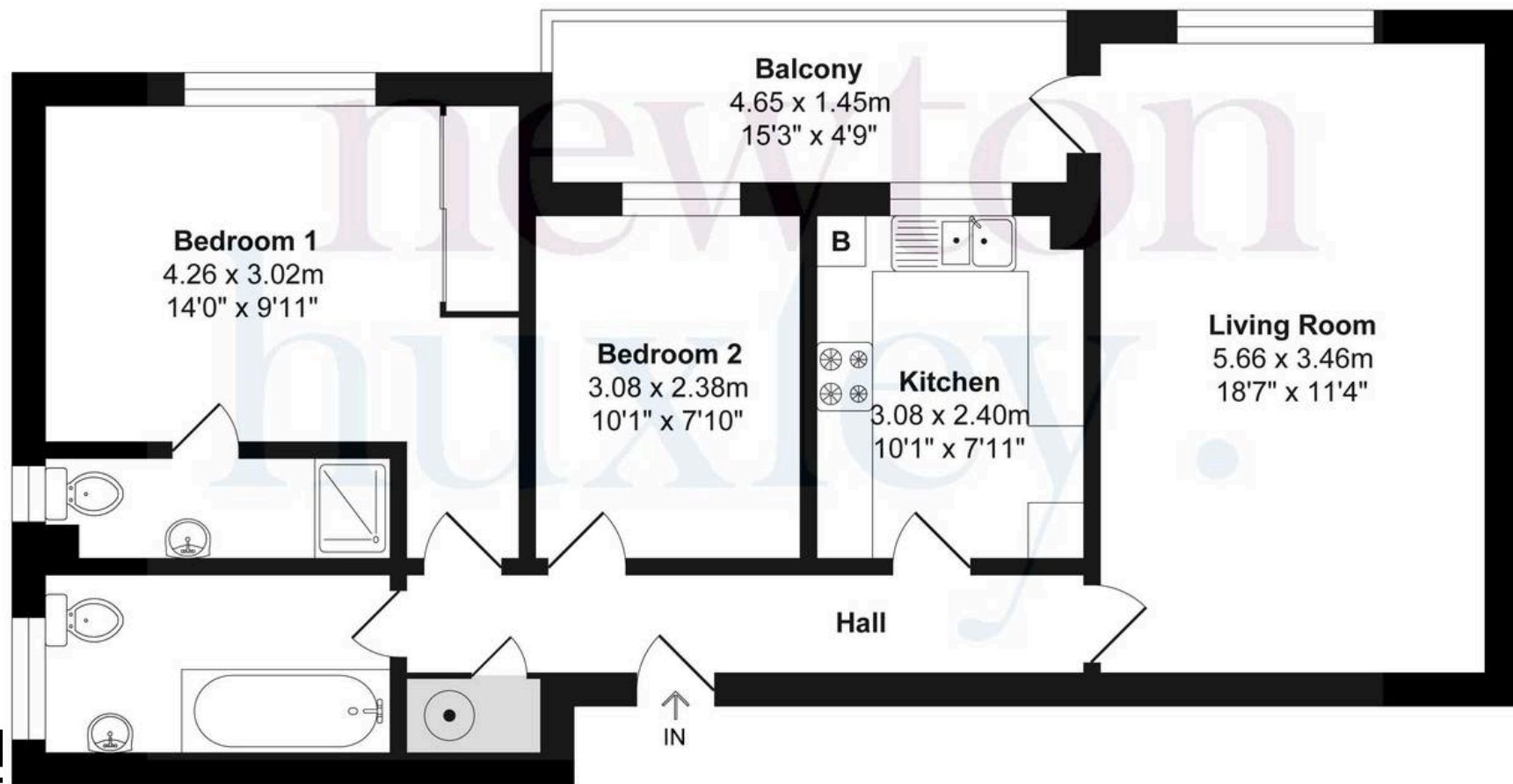
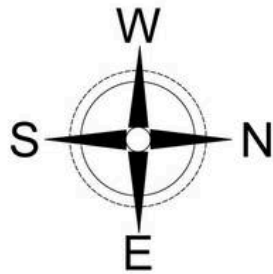
Total Area: 66.0 m² ... 710.41 ft²

FOR ILLUSTRATIVE PURPOSE ONLY.

Whilst every attempt has been made to ensure the accuracy of the floor plan shown, all measurements, positioning, fixtures, features, fittings and any other data shown are an approximate interpretation for illustrative purposes only and are not to scale.

No responsibility is taken for any error, omission, miss-statement or use of data shown.

newton
huxley.



First Floor

newton
huxley.