



**Karenza Blackfield Road, Fawley, SO45 1EG**  
**£450,000**



**ANTHONY JAMES**  
PROPERTIES



# Karenza Blackfield Road

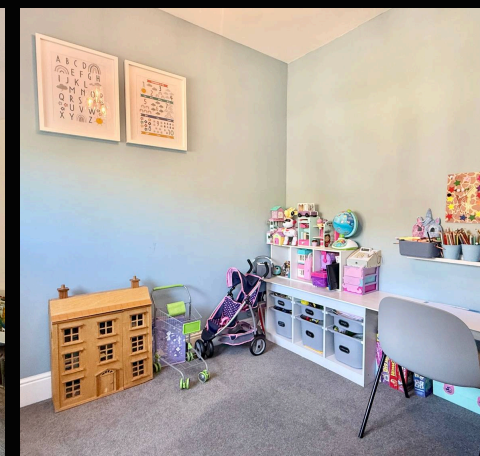
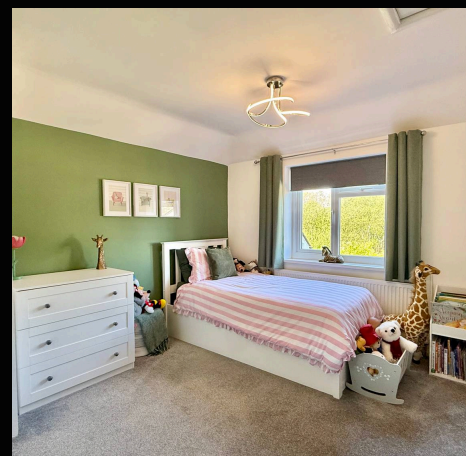
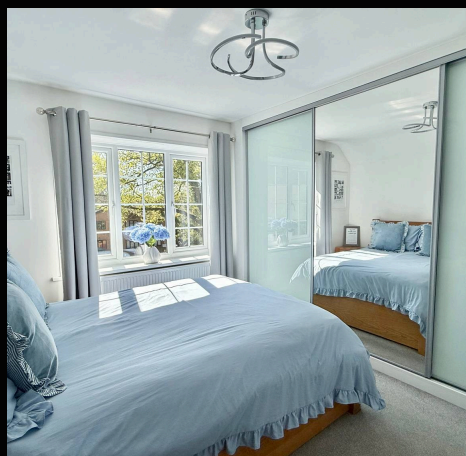
Fawley, Southampton

Three-bedroom detached house offers spacious and versatile accommodation. The property features a large lounge and a fantastic family/dining room, ideal for entertaining or relaxing. The modern kitchen is complemented by a separate utility room, while a ground floor WC adds convenience. Upstairs, there are two double bedrooms and a stunning family bathroom, all finished to a high standard. The property also benefits from a garage/store, providing additional storage or workspace.

Outside, the property boasts a generous driveway to the front, offering off-road parking for numerous vehicles, with timber fencing and attractive flower borders enhancing kerb appeal. To the rear, a large area of decking extends from the house, with steps leading down to a spacious lawn. A further timber deck at the rear of the garden provides a sunny spot to relax or entertain guests. Additional features include a summer house with power connected, ideal for use as a home office or studio, and an outside tap for convenience. This extensive and sunny rear garden completes the appeal of this outstanding family home.

Council Tax band: D

Tenure: Freehold



1 Southward House  
Dibden Purlieu SO45 4PT

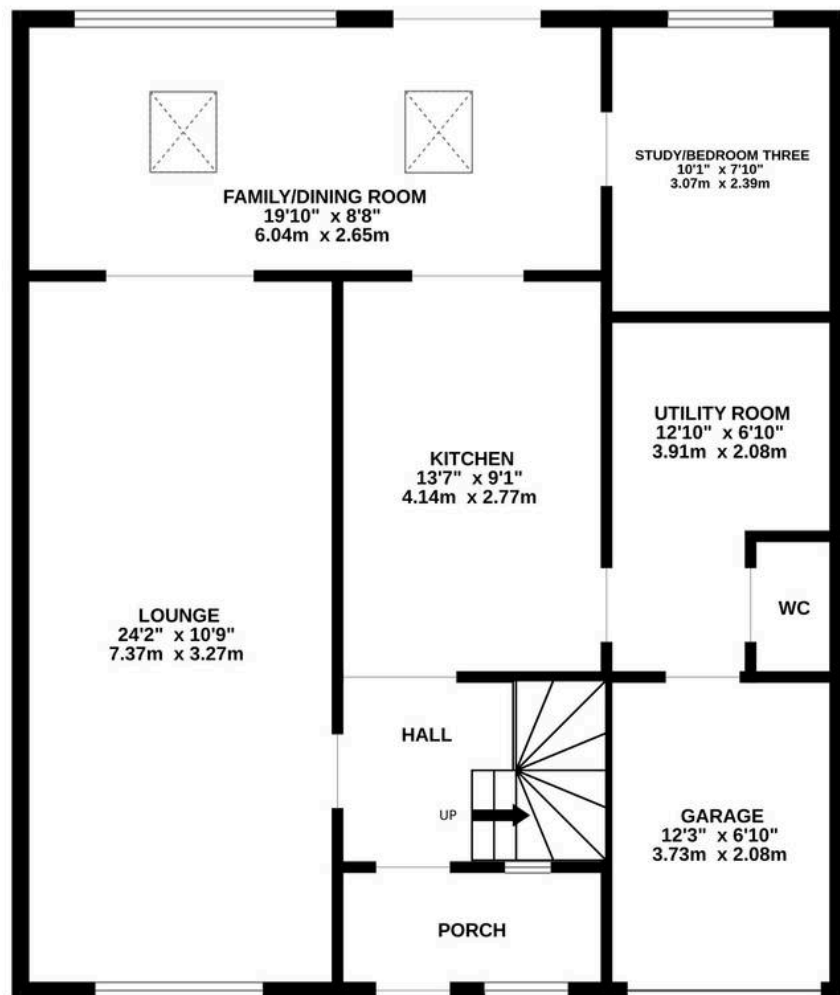


T: 02380 844405

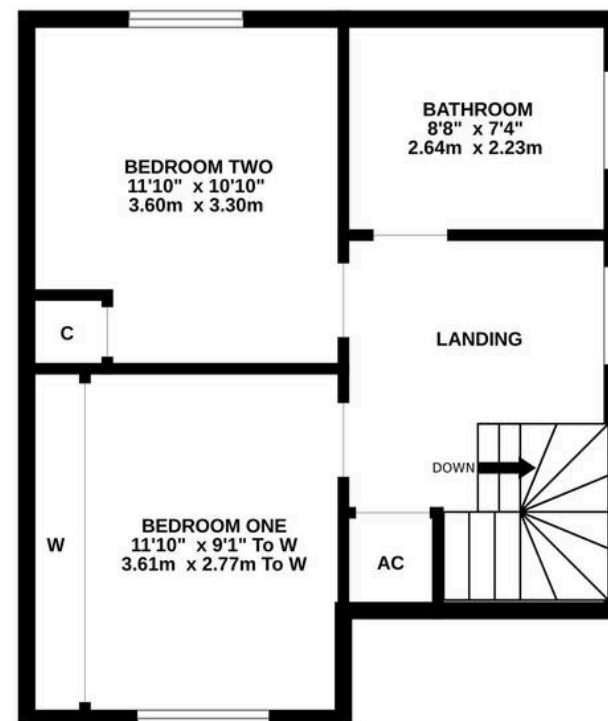
info@anthonyjamesproperties.co.uk



GROUND FLOOR  
909 sq.ft. (84.4 sq.m.) approx.



1ST FLOOR  
436 sq.ft. (40.5 sq.m.) approx.



TOTAL FLOOR AREA : 1344 sq.ft. (124.9 sq.m.) approx.

Whilst every attempt has been made to ensure the accuracy of the floorplan contained here, measurements of doors, windows, rooms and any other items are approximate and no responsibility is taken for any error, omission or mis-statement. This plan is for illustrative purposes only and should be used as such by any prospective purchaser. The services, systems and appliances shown have not been tested and no guarantee as to their operability or efficiency can be given.

Made with Metropix ©2026