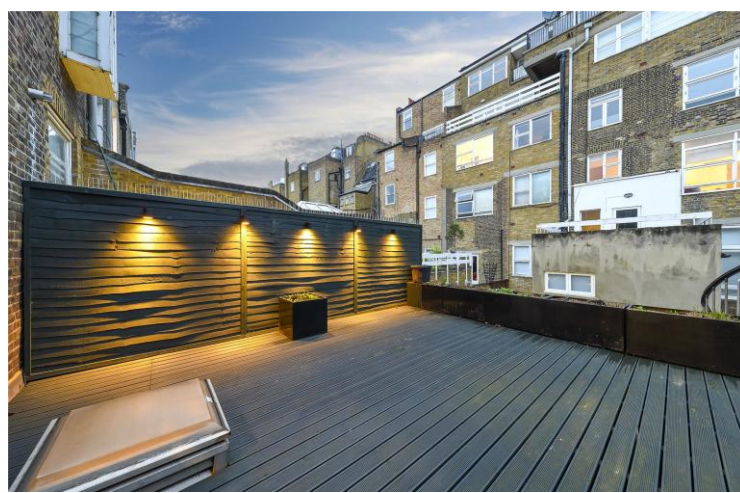




Beauchamp Place  
Knightsbridge, SW3

CHESTERTONS





A fabulous maisonette arranged over the 1st, 2nd and 3rd floors of an impressive period property with wood flooring throughout, two fantastic private terraces and its own entrance.

The apartment is presented in excellent condition offering accommodation that includes a large reception with excellent ceiling height, dining room and modern fully fitted kitchen providing access to one of the two private terraces. In addition, there are two double bedrooms and two bathrooms suite.

- Wood flooring throughout
- Maisonette with own entrance
- Two double bedrooms
- Two bathrooms

**£1,269.23 per week (£5,500 pcm)**

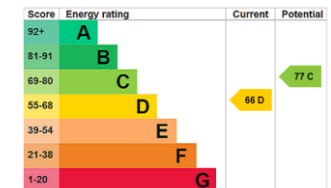
Additional tenant charges apply (fees apply to non-AST tenancies only)

Tenancy Agreement Fee: £300

References per Tenant/Guarantor: £60

Inventory check (approx. £100 – £250 inc. VAT)

[chestertons.co.uk/property-to-rent/applicable-fees](http://chestertons.co.uk/property-to-rent/applicable-fees)



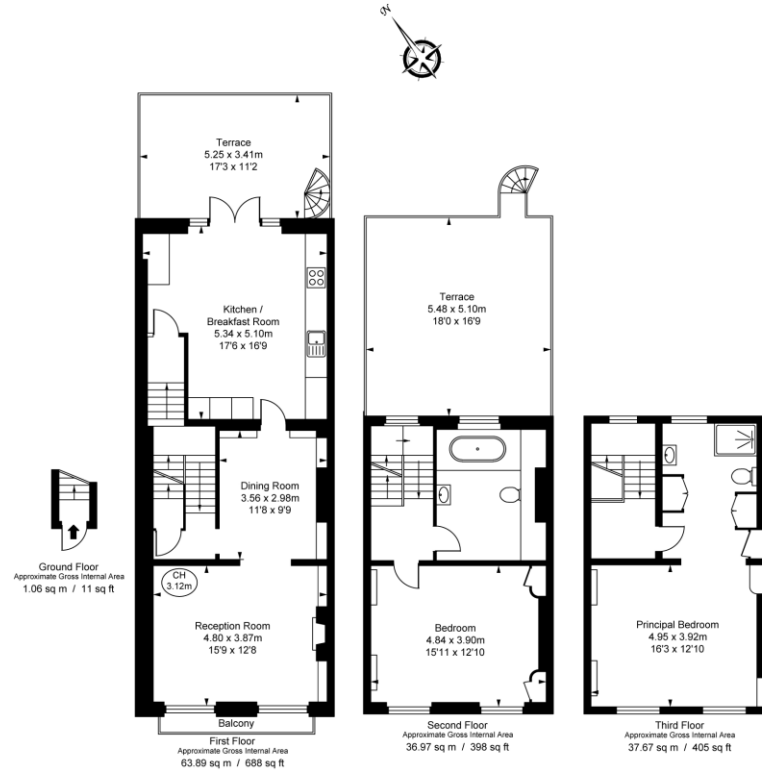
**Minimum Term:** 12 months  
**Deposit Required:** 6 weeks  
**Local Authority:** Kensington and Chelsea  
**Council Tax Band:** G  
**EPC Rating:** D  
**Unfurnished**

*Chestertons Knightsbridge & Belgravia Lettings*

31 Lowndes Street  
 London  
 SW1X 9HX

[knightsbridgelettingsusers@chestertons.co.uk](mailto:knightsbridgelettingsusers@chestertons.co.uk)  
 02072353530  
[chestertons.co.uk](http://chestertons.co.uk)

Beauchamp Place, SW3  
 Approximate Gross Internal Area  
**139.59 sq m / 1,503 sq ft**  
 ( CH = Ceiling Heights )



This plan is not to scale. It is for guidance and not for valuation purposes.  
 All measurements and areas are approximate only, and have been prepared in accordance with the current edition of the RICS Code of Measuring Practice.  
 © Fulham Performance

Chesterton UK Services Limited trading as Chestertons for themselves and for the vendor of this property whose agents they are, give notice that (i) these particulars do not constitute any part of an offer or contract, (ii) all statements contained within these particulars are made without responsibility on the part of Chestertons or the vendor, (iii) whilst made in good faith, none of the statements contained within these particulars are to be relied upon as a statement or representation of fact, (iv) any intending purchasers must satisfy themselves by inspection or otherwise as to the correctness of each of the statements contained within these particulars, (v) the vendor does not make or give either Chestertons or any person in their employment any authority to make or give representation or warranty whatsoever in relation to this property. Wide angle lenses may be used. ©Copyright Chestertons | Chesterton Global Ltd | Registered Office 5th Floor, The Lantern, 75 Hampstead Road, London, NW1 2PL Registered Company Number 05334580.



This paper is  
 100% recyclable