



## Borough Road, TW7

£299,950

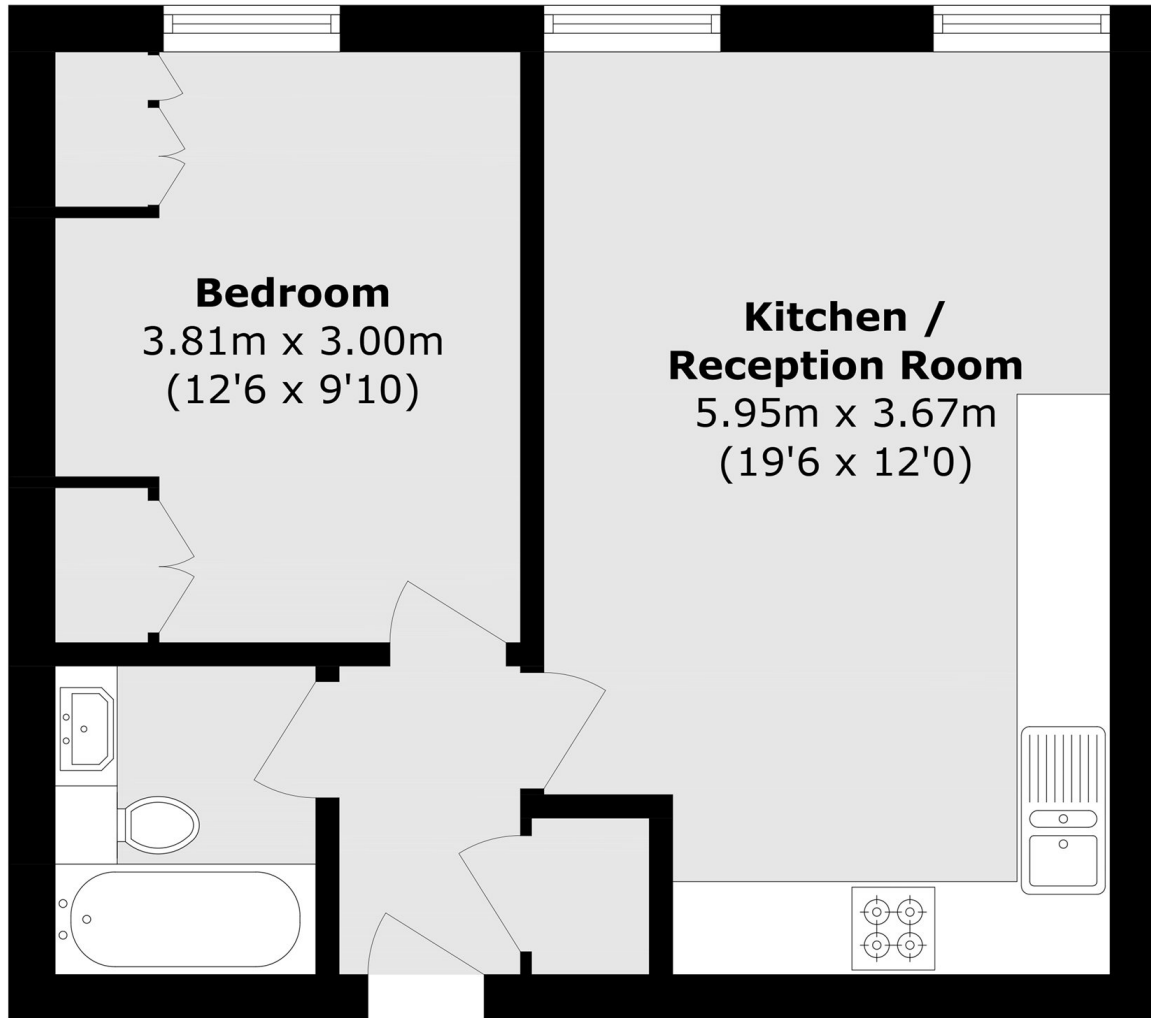
Offered to the market with no onward chain is this delightful one double bedroom apartment located in a popular and sought after gated development. Further benefits include a long lease and allocated parking.

Borough Road is situated near Osterley, Syon Lane, and Isleworth Stations. It benefits from a variety of green spaces, including Syon Park and Jersey Gardens, and amenities of central Osterley and Spring Grove.

### Features

- One Bedroom Apartment
- First Floor
- Gated Development
- Allocated Parking
- Sought After Location
- No Chain

# Borough Road, Isleworth, TW7



Total area (approx.): 40.4 sq. m (434.8 sq. ft)