



## STRAND, WC2R

£2,250,000

A three bedroom, three bathroom apartment spanning 1,465 square foot of internal living space. The open-plan kitchen has stone worktops and Miele integrated appliances and the living area boasts five large windows which allow for an abundance of natural light.

- Three Bedrooms
- Built-In Wardrobes
- Two Parking Spaces
- Transport Links
- 24-Hour Concierge
- Video Entry Phone



## ABOUT THE HOME

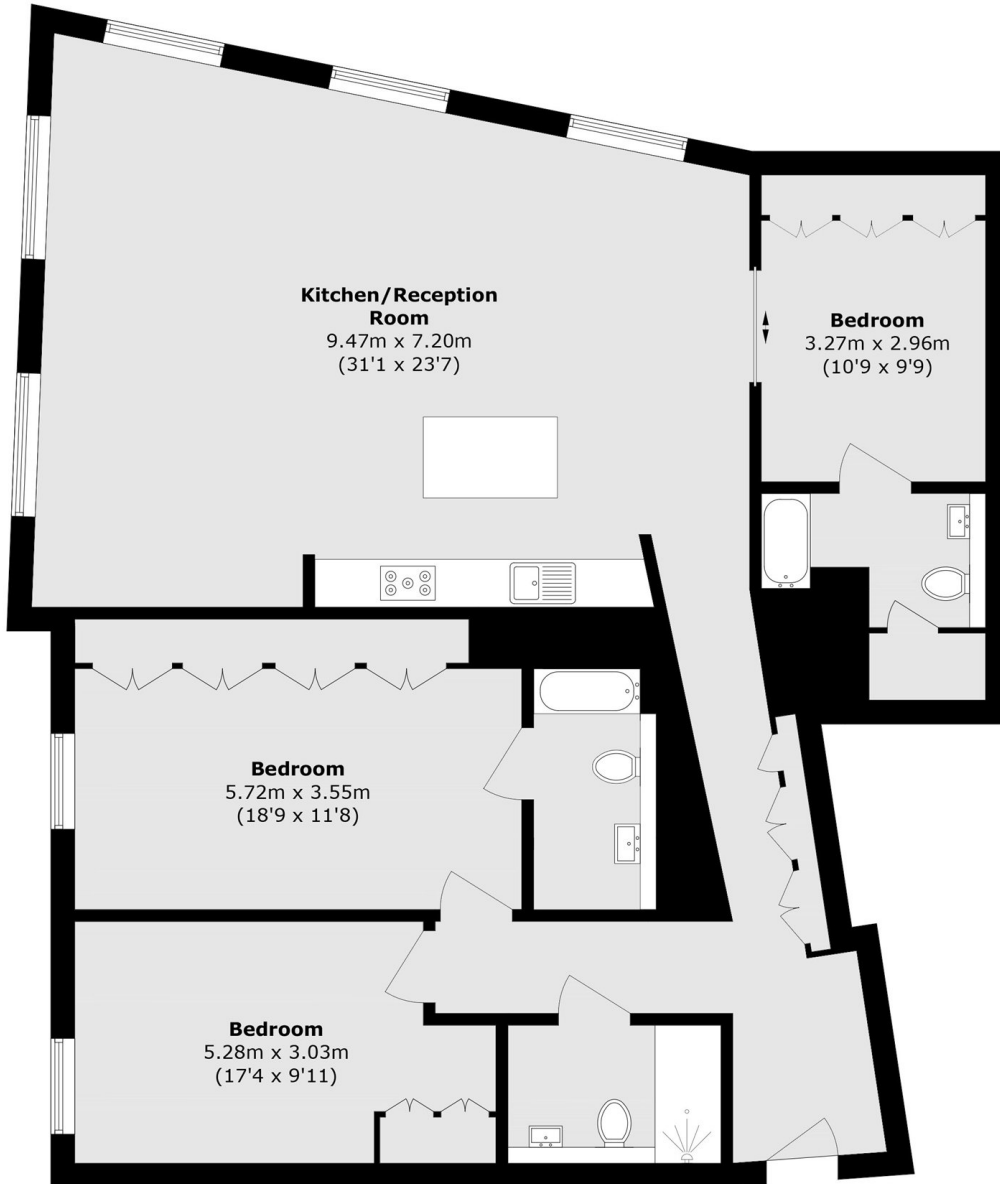
With three spacious double bedrooms, each fitted with built-in wardrobes and en suite bath or shower rooms featuring under-floor heating, the apartment boasts large windows in all rooms filling the apartment with natural light. The expansive reception area flows seamlessly into a generous dining space,

The apartment also comes with two private underground car parking space, state-of-the-art features include video entry-phone security, comfort cooling, integrated touch-panel lighting, and a Denon surround sound system.

Perfectly positioned near the shops, bars, and restaurants of Covent Garden, Leicester Square, and Oxford Street, the apartment offers a prime central London location with access to the city.







Total area (approx.): 138.7 sq. m (1492.9 sq. ft)

**LiFE RESIDENTIAL**

252 Westminster Bridge  
Road, London, SE1 7PD  
Sales: 020 7476 0125  
Lettings: 020 7620 1600

Energy Rating: C. We aim to make our particulars both accurate and reliable. However they are not guaranteed; nor do they form part of an offer or contract. If you require clarification on any points then please contact us, especially if you're traveling some distance to view. Please note that appliances and heating systems have not been tested and therefore no warranties can be given as to their good working order.