



## Hamlet Gardens, W6

£700,000

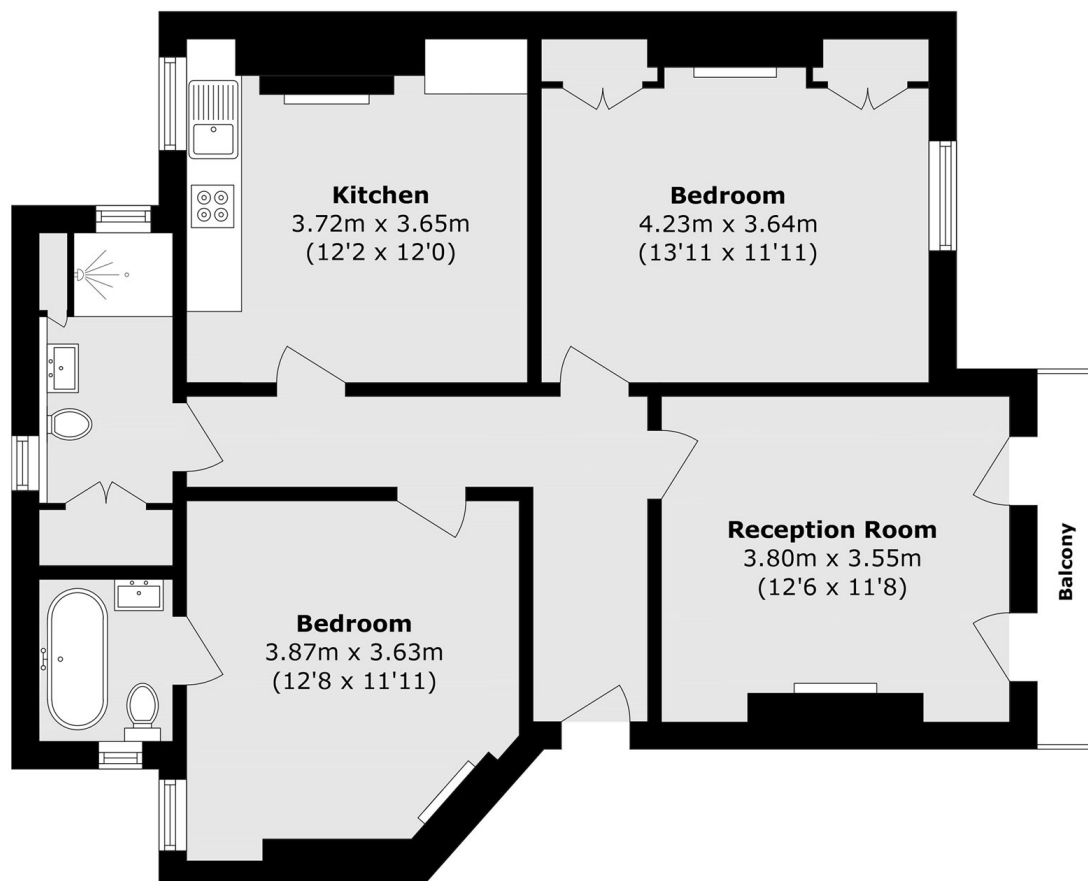
Dexters are proud to present this two bedroom, two bathroom flat on the top floor of this prestigious mansions block.

Hamlet Gardens is close to Ravenscourt Park and a short distance to all amenities of Stamford Brook, Chiswick High Road and the riverside. You have plenty of tube lines to choose from with the District line, Circle line, Hammersmith and City line and Piccadilly line.

### Features

- Two Bedrooms
- Two Bathrooms
- Private South Facing Balcony
- Separate Kitchen
- Mansions Block
- Ravenscourt Park

# Hamlet Gardens, London, W6



Total area (approx.): 77.0 sq. m (828.8 sq. ft)

Balcony area (approx.): 2.2 sq. m (23.6 sq. ft)