

## Kilburn Park Road, NW6

£585,000

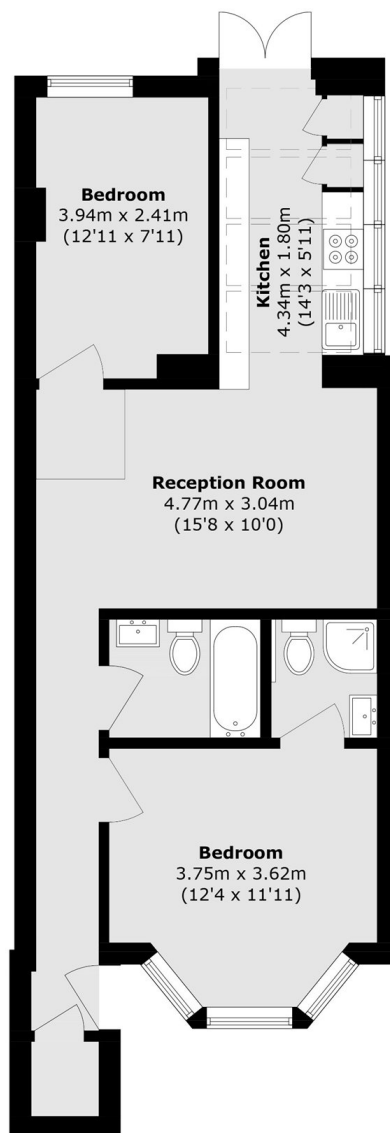
A well-presented garden flat set in a Victorian conversion. This bright property is comprised of two double bedrooms, one of which features a bay window and en suite, a separate kitchen with skylights and access to a private garden.

Kilburn Park Road is located within a short distance of Kilburn Park underground station (Bakerloo line) and Kilburn High Road overground station (Lioness and Mildmay lines), as well as the amenities in Maida Vale, including Paddington Recreation Ground.

### Features

- Victorian Conversion
- Private Entrance
- Skylights
- Two Bathrooms
- Private Garden
- Great Transport Connections

# Kilburn Park Road, London, NW6



Total area (approx.): 60.3 sq. m (649.0 sq. ft)