



6 Elm Close

Hargrave, Northamptonshire NN9 6BH



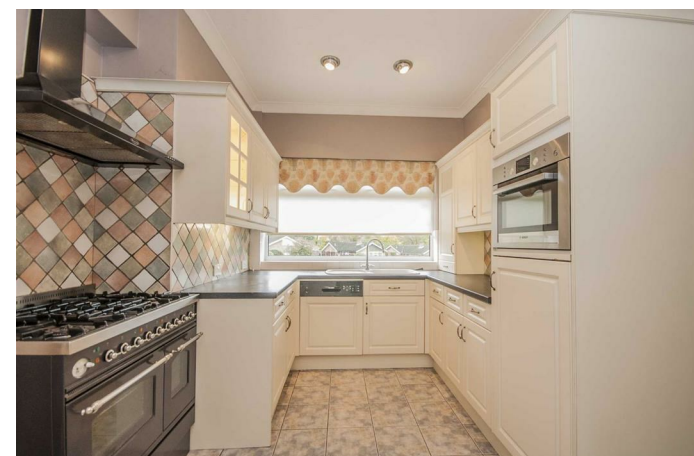
**Simpson & Partners**

**\*\*Available early May 2026 \*\*** Simpson and Partners are delighted to offer to the market this beautiful detached bungalow situated in this pretty and well sought after village of Hargrave. This bungalow occupies a commanding elevated position on this tree lined cul de sac and rests within a very generous plot of approximately half an acre (sts). The accommodation comprises: lounge, kitchen, utility room, dining room, spacious conservatory addition, WC, three bedrooms with the master benefitting from en-suite bathroom and family bathroom. Features include a double garage, off street parking for several vehicles. A notable feature of this property is a beautiful and landscaped rear garden which enjoys a high degree of privacy and backs onto fields. Available early May 2026, a pet considered. EPC rating E, council tax band E.



£1,750 PCM

 3  3  3





When you buy with Simpson and Partners, you know **you'll be in safe hands**. From the moment you walk through our doors, we'll make you **feel truly welcome**. Our sales consultants and financial advisors will take you through **every step of the process**, offering **free expert advice** along the way, from help choosing the right mortgage and insurance through to finding your conveyancer. And if you need help selling your home too, **with over 20 years of local experience, you can trust us to get you moving**.



**Simpson  
& Partners**

Making Every  
Journey Personal



01832 731222

[thrapston@simpsonandpartners.co.uk](mailto:thrapston@simpsonandpartners.co.uk)

<https://www.simpsonandpartners.co.uk/>

43-45 High Street, Thrapston, Northants, NN14 4JJ