



Petal Court, Worsley, Manchester

£995 Per Month

Set in a picturesque location and within easy reach of the city centre, this development is ideal for both growing families and young professional couples.

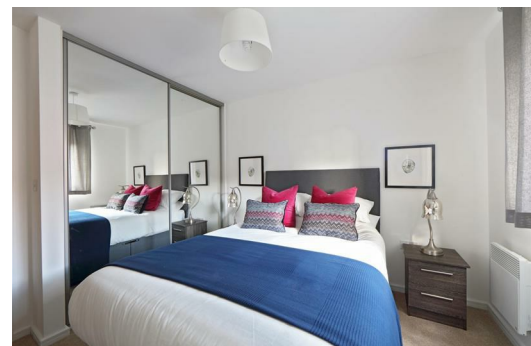
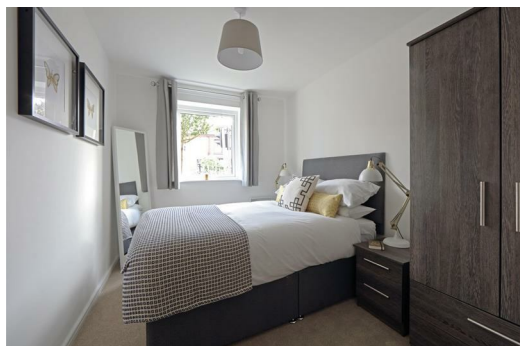
Walkden offers the site a local town centre which is great for shopping, food and socialising. Heyfields is also a 25-minute drive from Manchester city centre, where a more extensive range of shops and restaurants will cater for all of your needs.

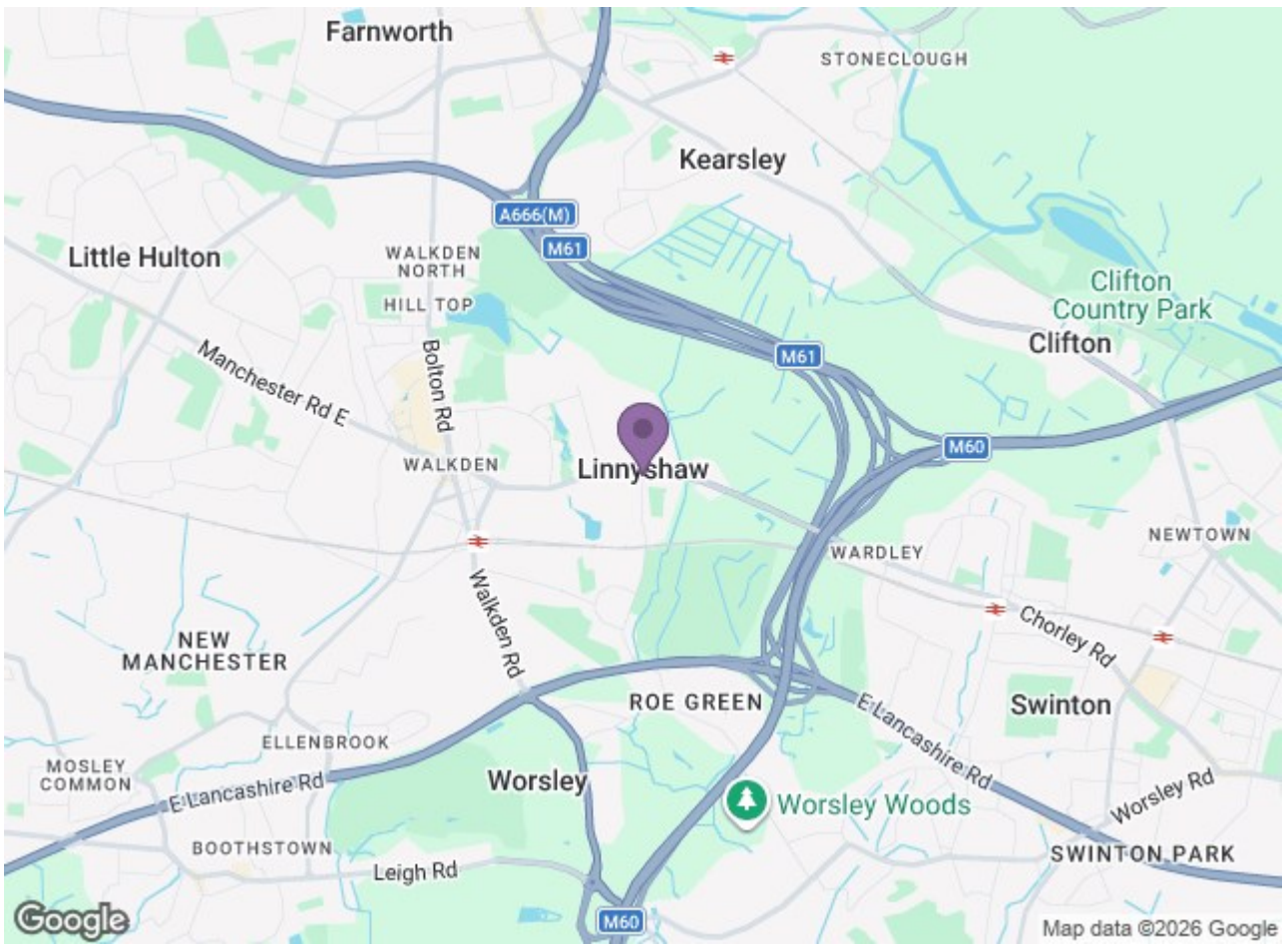
There are a number of schools local to the development and Walkden and Moorside train stations are less than 2 miles away with regular services to Manchester and other neighbouring areas."

Elegant by name, elegant by nature, our Washington apartments are spacious, modern and energy efficient.

At the heart of this home is the contemporary open-plan kitchen, which merges space with the comfortable living and dining areas. Down the hallway, you have two beautiful double bedrooms and the generously sized bathroom. Light colour wood and pale interiors throughout add to the spacious feel. Quality flooring and blinds combine with secure-by-design windows and doors, and feature fitted alarm systems for extra peace of mind.

Available Now





Energy Efficiency Rating		Environmental Impact (CO ₂) Rating	
Current	Target	Current	Target
A	A	A	A
B	B	B	B
C	C	C	C
D	D	D	D
E	E	E	E
F	F	F	F
G	G	G	G

Energy Efficiency Rating: 77 / 77
 Environmental Impact (CO₂) Rating: 79 / 79

England & Wales