



Alpha Road, KT5

£375,000

Modern top floor apartment with a roof terrace. Located in a contemporary purpose-built development, this two-bedroom, two-bathroom top floor apartment offers modern living with excellent natural light.

Alpha Road is around the corner from Ewell Road which offers a vast selection of bars, restaurants and local shops. Surbiton train station is conveniently less than half a mile away with its fast links to London Waterloo in 16 minutes. The farmer market at Maple Road and the River are also nearby.

Features

- Top Floor Apartment
- Two Double Bedrooms
- Two Bathrooms
- Roof Terrace
- Allocated Parking
- No Onward Chain

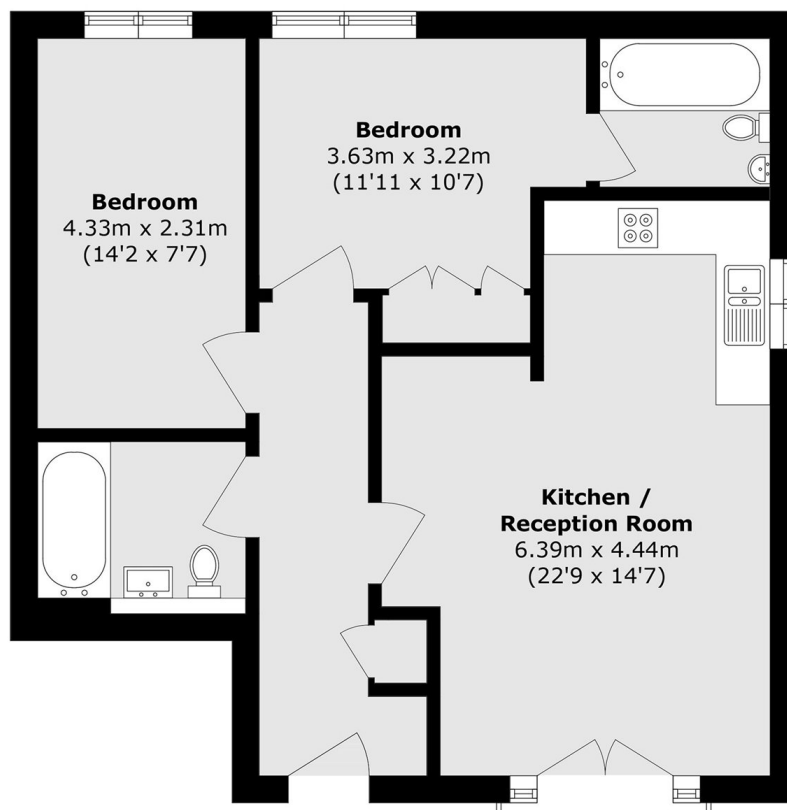


Alpha Road, KT5

The property features a spacious open-plan living area with an integrated kitchen, perfect for entertaining or relaxing. Both bedrooms are well-proportioned, with the principal bedroom benefiting from an en-suite shower room, in addition to a family bathroom.



Alpha Road, Surbiton, KT5



Total area (approx.): 62.2 sq. m (669.5 sq. ft)