



Longfellow Drive, offers over £235,000

- Spacious 4 bedroom Semi-detached Bungalow
- Off Street Parking & Garage
- Front and Rear Gardens
- Well-presented and Modern Throughout
- Close to Local Primary and Secondary Schools
- EPC Rating: D Council Tax Band: C





About the property

Situated in the popular residential area of Cefn Glas, Bridgend, this well presented four-bedroom semi-detached bungalow offers generous and versatile accommodation, making it an excellent choice for growing families or those seeking flexible living space in a convenient location.

The property has been maintained throughout and briefly comprises an inviting entrance hallway leading to a spacious lounge, a fitted kitchen/breakfast room, family bathroom, and four well-proportioned bedrooms, offering adaptable space for family living, guest accommodation, home working or hobbies.

Externally, the home benefits from front and rear gardens, providing space to enjoy outdoor living, entertaining, or family use. A detached single garage together with a gated driveway offers valuable off-road parking and additional storage.

Perfectly positioned for family life, the property is within close proximity to local primary and secondary schools, as well as everyday amenities. Bridgend town centre is only a short distance away, offering a range of shops, restaurants and transport links. The location also provides excellent commuter access towards Porthcawl, Pyle, Pencoed and wider Bridgend areas.





Accommodation

Entrance Hall

Reception Room - 15' 5" max x 10' 10" max (4.70m max x 3.30m max)

Kitchen - 11' 6" x 9' 10" (3.51m x 3.00m)

Bedroom One - 15' 5" x 10' 10" (4.70m x 3.30m)

Bedroom Three - 10' 2" x 6' 11" (3.10m x 2.11m)

Lounge/Bedroom Four - 11' 2" x 9' 10" (3.40m x 3.00m)

Bathroom

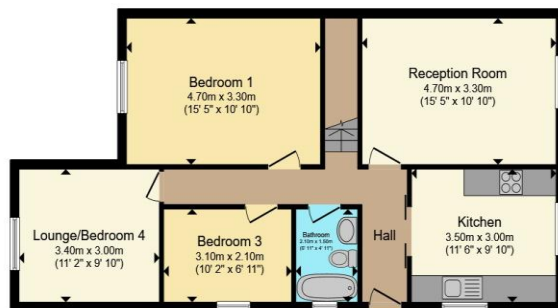
First Floor

Bedroom Two - 15' 5" x 9' 2" plus recess (4.70m x 2.79m plus recess)

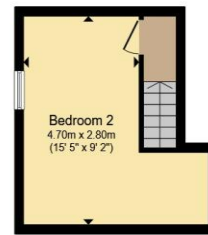
01656 657201

bridgend@peteralan.co.uk

Floorplan



Ground Floor



First Floor

Total floor area 93.0 m² (1,001 sq.ft.) approx

This floor plan is for illustrative purposes only. It is not drawn to scale. Any measurements, floor areas (including any total floor area), openings and orientation are approximate. No details are guaranteed, they cannot be relied upon for any purpose and they do not form part of any agreement. No liability is taken for any error, omission or misstatement. A party must rely upon its own inspection(s). Powered by www.propertybox.io

Important Information

Note while we endeavour to make our sales details accurate and reliable, if there is any point which is of particular interest to you, please contact the office and we will be pleased to confirm the position for you. We have not personally tested any apparatus, equipment, fixtures, fittings or services and cannot verify they are in working order or fit for their purposes. Nothing in these particulars is intended to indicate that carpets or curtains, furnishings or fittings, electrical goods (whether wired or not). Gas fires or light fittings or any other fixtures not expressly included form part of the property offered for sale. This computer generated Floorplan, if applicable, is intended as a general guide to the layout and design of the property. It is not to scale and should not be relied upon for dimensions. Tenure: We cannot confirm the tenure of the property as we have not had access to the legal documents. The buyer is advised to obtain verification from their solicitor or surveyor.

Peter Alan Limited is registered in England and Wales under company number 2073153, Registered Office is Cumbria House, 16-20 Hockliffe Street, Leighton Buzzard, Bedfordshire, LU7 1GN. VAT Registration Number is 500 2481 05. For activities relating to regulated mortgages and non-investment insurance contracts, Peter Alan Limited is an appointed representative of Connells Limited which is authorised and regulated by the Financial Conduct Authority. Connells Limited's Financial Services Register number is 302221. Most buy-to-let