



TO LET

Manor Park North, Knutsford



Knutsford, WA16 8DQ

Manor Park North

£1250 pcm



The Property

This superb, spacious terraced house has been lovingly maintained and provides generous, bright accommodation ideal for singles, couples or families. The property sits in a quiet spot close to Knutsford town centre and all its local amenities. Particular mention must be made of the bright breakfast kitchen with door leading to enclosed back garden.

The property is approached via a gated and well-presented front garden. To the rear is a good-sized garden laid mainly to lawn and enclosed by woodlap fencing. A patio area provides a perfect opportunity for

al fresco dining. Garden maintenance is included in the rent.

Directions

From Knutsford rail station head down Adams Hill and follow the bend around to the traffic lights. Turn left on to Hollow Lane and continue on to Mobberley Road. After approx. ½ mile turn right on to Manor Park North, and the property can be found on the left-hand side.

- An immaculate terrace house
- Walking distance of Knutsford town centre & Tatton Park
- Generous living space
- Three bedrooms
- Two bathrooms (one en-suite)
- Lovely enclosed gardens with lawn & patio
- Unfurnished
- Available July

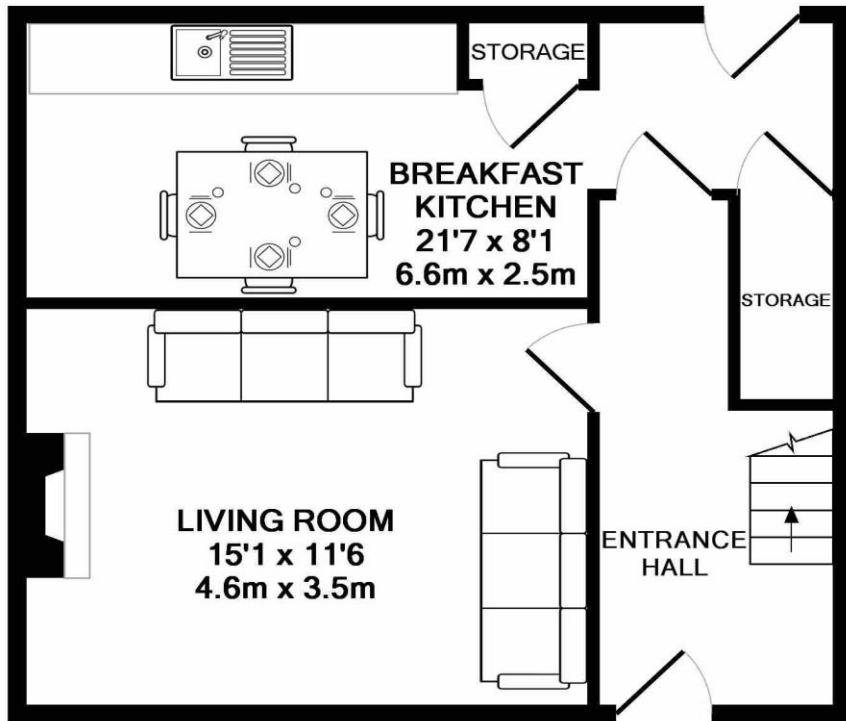
Postcode – WA16 8DQ

EPC Rating – C

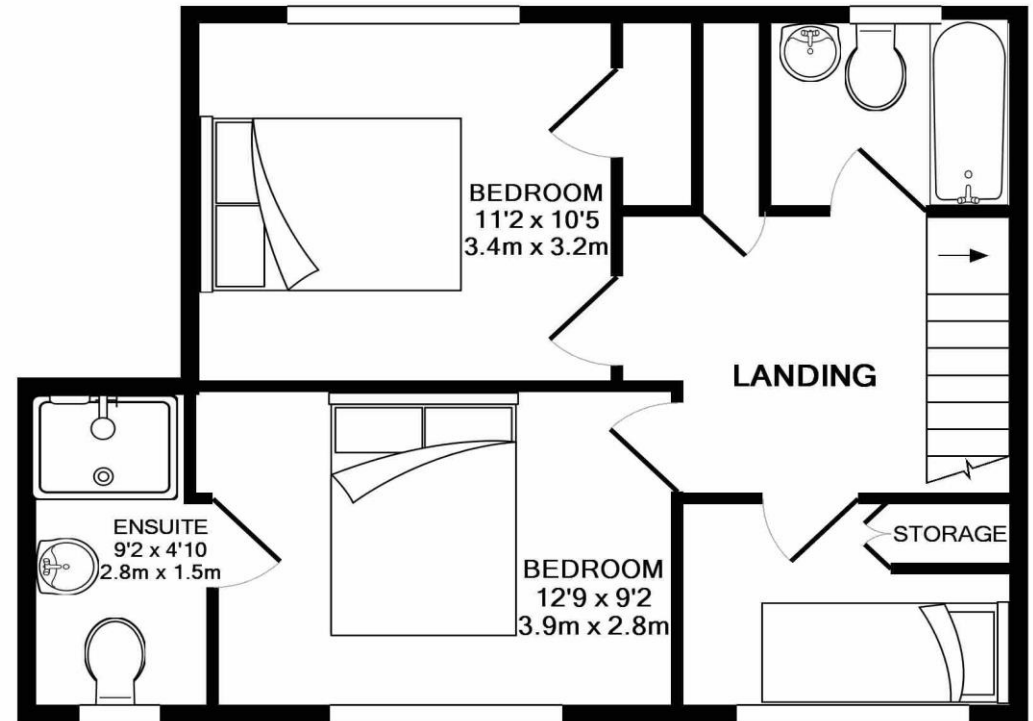
Local Authority – Cheshire East

Council Tax – Band C





GROUND FLOOR
APPROX. FLOOR
AREA 423 SQ.FT.
(39.3 SQ.M.)



1ST FLOOR
APPROX. FLOOR
AREA 464 SQ.FT.
(43.1 SQ.M.)

TOTAL APPROX. FLOOR AREA 887 SQ.FT. (82.4 SQ.M.)

Whilst every attempt has been made to ensure the accuracy of the floor plan contained here, measurements of doors, windows, rooms and any other items are approximate and no responsibility is taken for any error, omission, or mis-statement. This plan is for illustrative purposes only and should be used as such by any prospective purchaser. The services, systems and appliances shown have not been tested and no guarantee as to their operability or efficiency can be given

Made with Metropix ©2019

103 King Street, Knutsford, Cheshire, WA16 6EQ

01565 654 000

E: info@irlamsestateagents.co.uk

www.irlamsestateagents.co.uk

I1021_ Printed by Ravensworth 01670 713330

Irlams (Estate Agents) Ltd for themselves and for the vendors or lessors of this property whose agents they are give notice that:

- (a) The particulars are set out as a general outline only for the guidance of intending purchasers or lessees, and do not constitute, nor constitute part of, an offer or contract;
- (b) All descriptions, dimensions, references to condition and necessary permissions for use and occupation, and other details are given in good faith and are believed to be correct but any intending purchasers or lessees should not rely on them as statements or representations of fact, but must satisfy themselves by inspection or otherwise as to the correctness of each of them;
- (c) No person in the employment of Irlams (Estate Agents) Ltd has any authority to make or give any representation or warranty whatsoever in relation to this property.

