



16, GATESIDE GROVE, GREENOCK, PA16
7DF





Description

This well presented bright one bedroom GROUND FLOOR FLAT lies within a desirable cul de sac location in the popular Gateside Gardens residential area. Offers an excellent first time purchase, rental investment opportunity and would also suit downsizers. A particular feature is the private enclosed landscaped rear garden with paved patio, pebbled plot, lawned area and timber shed. A private lawned section of garden extends to the front of the property. There is resident's parking with an allocated space.

Specification includes: gas central heating and double glazing. There are south facing views towards the countryside in the distance.

Accommodation comprises: Entrance Hall by timber door with inbuilt cupboard. There is an airy rear facing Lounge with French doors leading the rear garden plus feature focal point fireplace . The fitted Kitchen with rear window has beech style units, black/grey high gloss marble effect work surfaces, splashback tiling and folding breakfast bar. Appliances include: stainless steel, chimney extractor hood, gas hob, electric oven, washing machine and integrated fridge/freezer.

There is a front facing double Bedroom offering two fitted mirrored wardrobes. The Bathroom features a three piece comprising: vanity wash hand basin set within white high gloss unit, wc and bath with "Mira" shower. Additional benefits include: wall and floor tiling plus decorative panelled ceiling with downlighters.

Inspection is essential for this affordable home with private garden. EPC = C.

Measurements

Hallway

Lounge

3.28m x 4.55m (10'9 x 14'11)

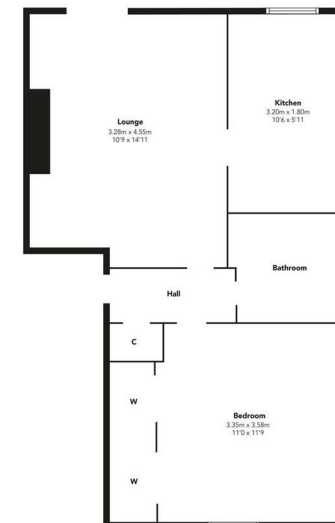
Kitchen

3.20m x 1.80m (10'6 x 5'11)

Bedroom

3.35m x 3.58m (11'0 x 11'9)

Bathroom

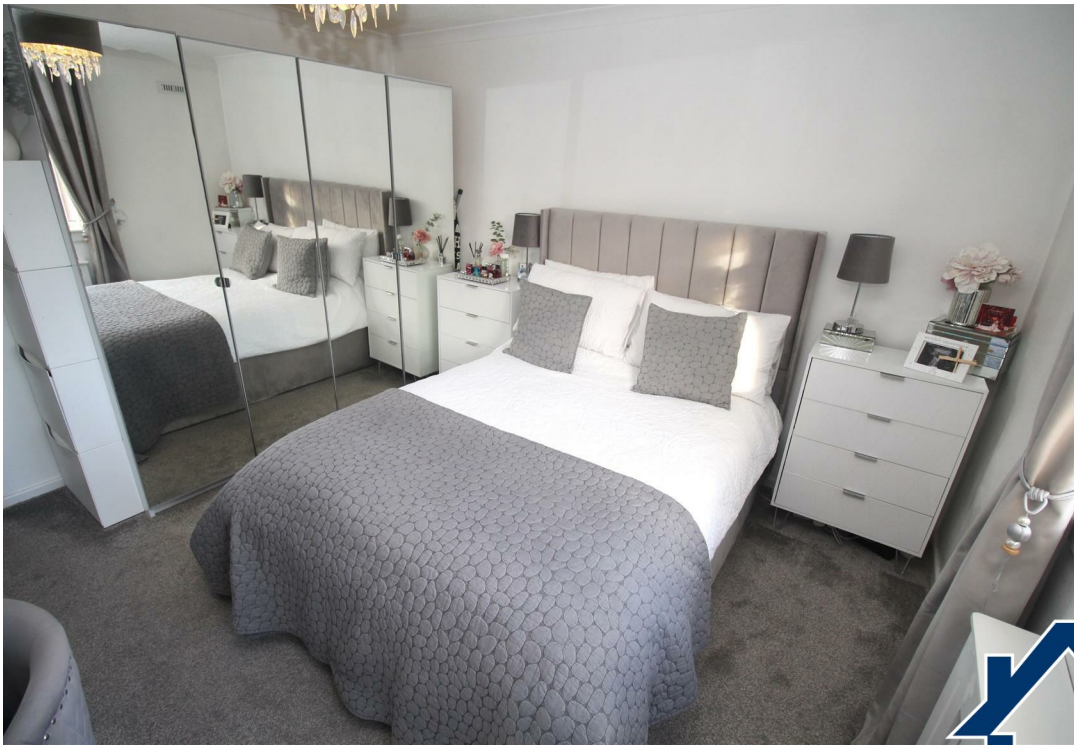


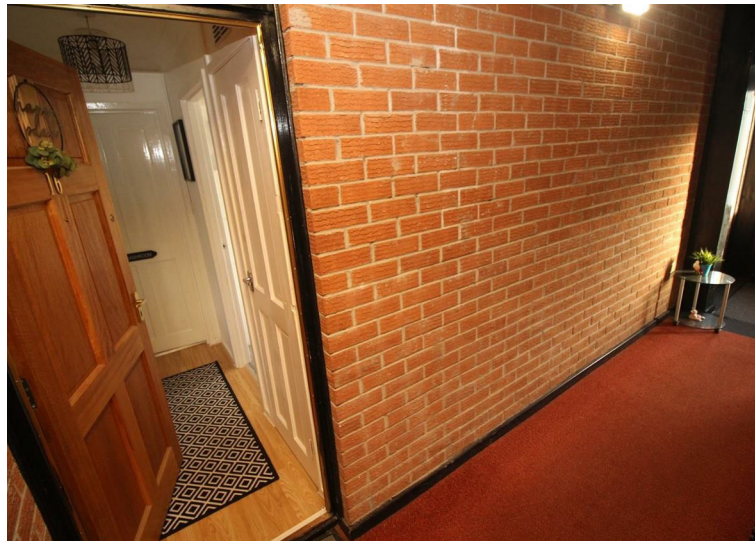
Floorplans are indicative only - not to scale
Produced by Pushplans Ltd











Agents Notes:

These sales particulars are set out as a general outline only, issued in good faith, but do not constitute representations of fact and do not form part of any offer or contract. Any services, equipment, appliances, fittings or central heating systems have not been tested and no warranty is given or implied that these are in working order. All measurements are approximate and for guidance only.

Neither Neill Clerk Estate Agents nor any of its employees or agents has any authority to make or give any representation or warranty whatever in relation to this property.

The
next
step..



To view call 01475 888400. Speak to us 7 days a week until 11pm every day to book your viewing appointment.

House to sell or rent?

Call 01475 888400 to book your free market appraisal.

Require a solicitor?

Ask us to supply a free legal quotation from Neill Clerk & Murray, Solicitors.
www.neillclerkmurray.co.uk

Stay fully up-to-date by following Neill Clerk on:



**60 West Blackhall Street
Greenock
Renfrewshire
PA15 1UY**

t: 01475 888400

e: sales@neillclerk.co.uk

w: www.neillclerk.co.uk



Find all our properties at: [rightmove](https://www.rightmove.co.uk) [Zoopla](https://www.zoopla.co.uk) [onTheMarket.com](https://www.onthemarket.com) [s1homes.com](https://www.s1homes.com)