



Eturia Place, Wednesbury, WS10

£1,385 Per Month

Nestled alongside the Walsall Canal, the site is situated 3.5 miles east of Wolverhampton City Centre with easy access to Wolverhampton Train station, as well as the M6.

The Dee is a beautiful four bedroom modern home, built over two levels.

Downstairs there is a large living room, WC and hallway leading to the rear of the property where you will find a stunning kitchen/dining area equipped with integrated kitchen appliances and contemporary units. The kitchen/dining area also benefits from French windows which take you into your own private rear garden.

Upstairs you will find a family sized bathroom including a stylish white bathroom suite and four bedrooms – two doubles and two singles. The master bedroom benefits from built-in wardrobes and an en-suite bathroom fitted with its own shower and cubicle.

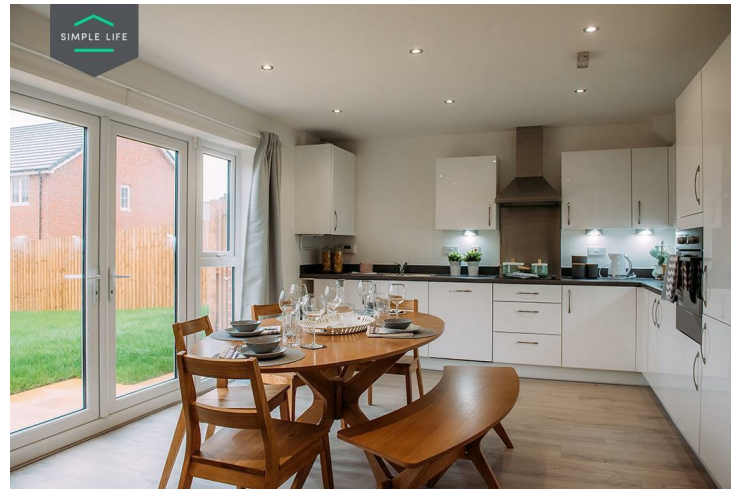
Part of the Black Country, Darlaston is located on the outskirts of the city with a range of services and facilities. The Kenway Retail Park is just 1 mile away providing 20+ retail outlets and local employment opportunities.

Within 3 miles of the site there are 74 'Good' or 'Outstanding' Ofsted rated primary and secondary schools, with the University of Wolverhampton just 5 miles away.

To access the site, postcode WS10 8QY brings you to the top of Heathfield Lane – follow this towards the canal with the development across both sides of the road.

Deposit £1590
Holding deposit £310
Council Tax C
Unfurnished
Available 20th July 2026





Key Features

- Private driveway
- Integrated Appliances
- Dark ash style worktops
- White blinds in bedrooms
- Security alarm system
- Light wash wood effect flooring
- Light grey carpets in the bedrooms and stairs
- Patio area in the private back garden

Location

