





Foxcovert Middlewich Road

Allostock, Knutsford

A charming, Grade II Listed country house requiring modernisation, in an exceptional position on the edge of Lower Peover village, standing in spacious, south and west facing gardens of 1.25 acres, together with an excellent parcel of adjoining paddock land, in all about 3 acres.

Council Tax band: G

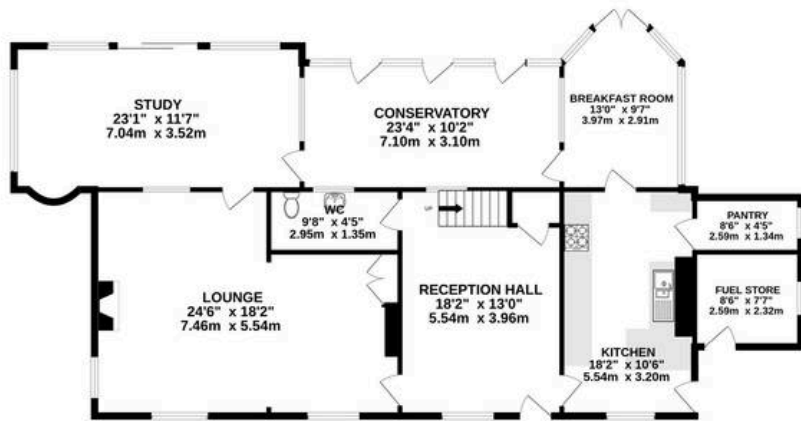
Tenure: Freehold

EPC Energy Efficiency Rating: F

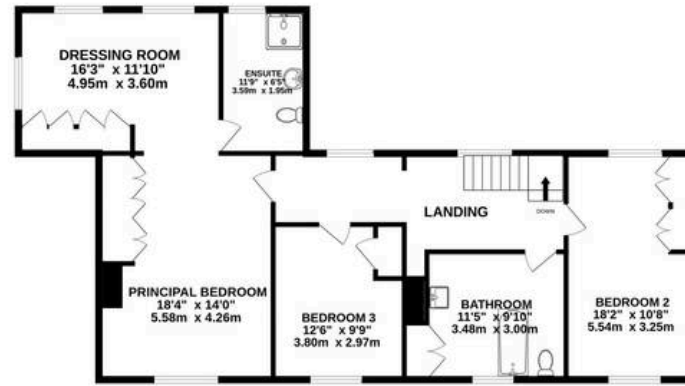
- Charming Grade II listed detached period farmhouse in lovely gardens and grounds, in all about 3 acres
- Additional land up to circa 6.5 acres available to purchase by separate negotiation
- Requiring updating and improvement
- Pretty position on the edge of Lower Peover village
- Three/four bedrooms, four reception rooms, two bathrooms



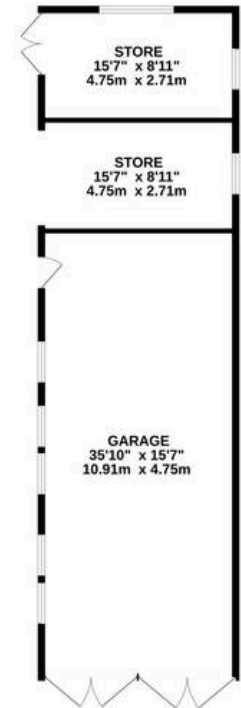
GROUND FLOOR
1556 sq.ft. (144.3 sq.m.) approx.



1ST FLOOR
1330 sq.ft. (123.0 sq.m.) approx.



OUTBUILDINGS
834 sq.ft. (77.0 sq.m.) approx.



TOTAL FLOOR AREA : 3520 sq.ft. (327.0 sq.m.) approx.

Whilst every attempt has been made to ensure the accuracy of the floorplan contained here, measurements of doors, windows, rooms and any other items are approximate and no responsibility is taken for any error, omission or mis-statement. This plan is for illustrative purposes only and should be used as such by any prospective purchaser. The services, systems and appliances shown have not been tested and no guarantee as to their operability or efficiency can be given.

Made with Metropix ©2025



Stuart Rushton & Company

Stuart Rushton & Co, 35 King Street – WA16 6DW

01565 757000

enquiries@srushton.co.uk

www.srushton.co.uk



We are not authorised to make or give any representations or warranties in relation to the property either here or elsewhere. We assume no responsibility for any statement that may be made in these particulars, and they do not form part of any offer or contract and must not be relied upon as statements or representation of fact. Any areas, measurements or distances are approximate. The text, photographs and plans are for guidance only. Importantly, it should not be assumed that the property has all necessary planning, building regulations or other consents and we have not tested any services, equipment or facilities. Purchasers must satisfy themselves by inspection or otherwise.