



Danehurst Court Alexandra Road, Epsom



# Danehurst Court Alexandra Road

Epsom

Council Tax band: C

Tenure: Leasehold

EPC Energy Efficiency Rating: D

EPC Environmental Impact Rating: D

- First Floor Apartment
- Two Double Bedrooms
- Spacious Lounge
- Garage and Parking
- No Chain
- Close to Alexandra Park
- Walk to Epsom Town Centre





## Danehurst Court Alexandra Road

Epsom

A well-presented two double bedroom first-floor apartment with a garage en bloc set within a sought-after residential block, ideally located close to Alexandra Park, Epsom.

The apartment is presented in very good condition with benefits including gas central heating and double glazing.

The kitchen is fitted with a number of base and highline cupboards, space for appliances and a built in oven with gas hob inset above.

The bathroom is tiled with a separate sink area and benefits from a window.

The two double bedrooms benefit from fitted wardrobes.

A private garage is included with the property, plus there is off street parking on a first come first serve basis.

Delightful communal grounds surround the property offering a tranquil space to enjoy.

The apartment block is in a sought after area, offering easy access to Epsom town centre, mainline station and plenty of shops and restaurants.

This popular development would appeal to both first-time buyers and investors alike, with an estimated rental income of £1,525 pcm, providing a gross yield of approximately 5.7%. The property is offered for sale with no onward chain and has a lease in excess of 900 years.



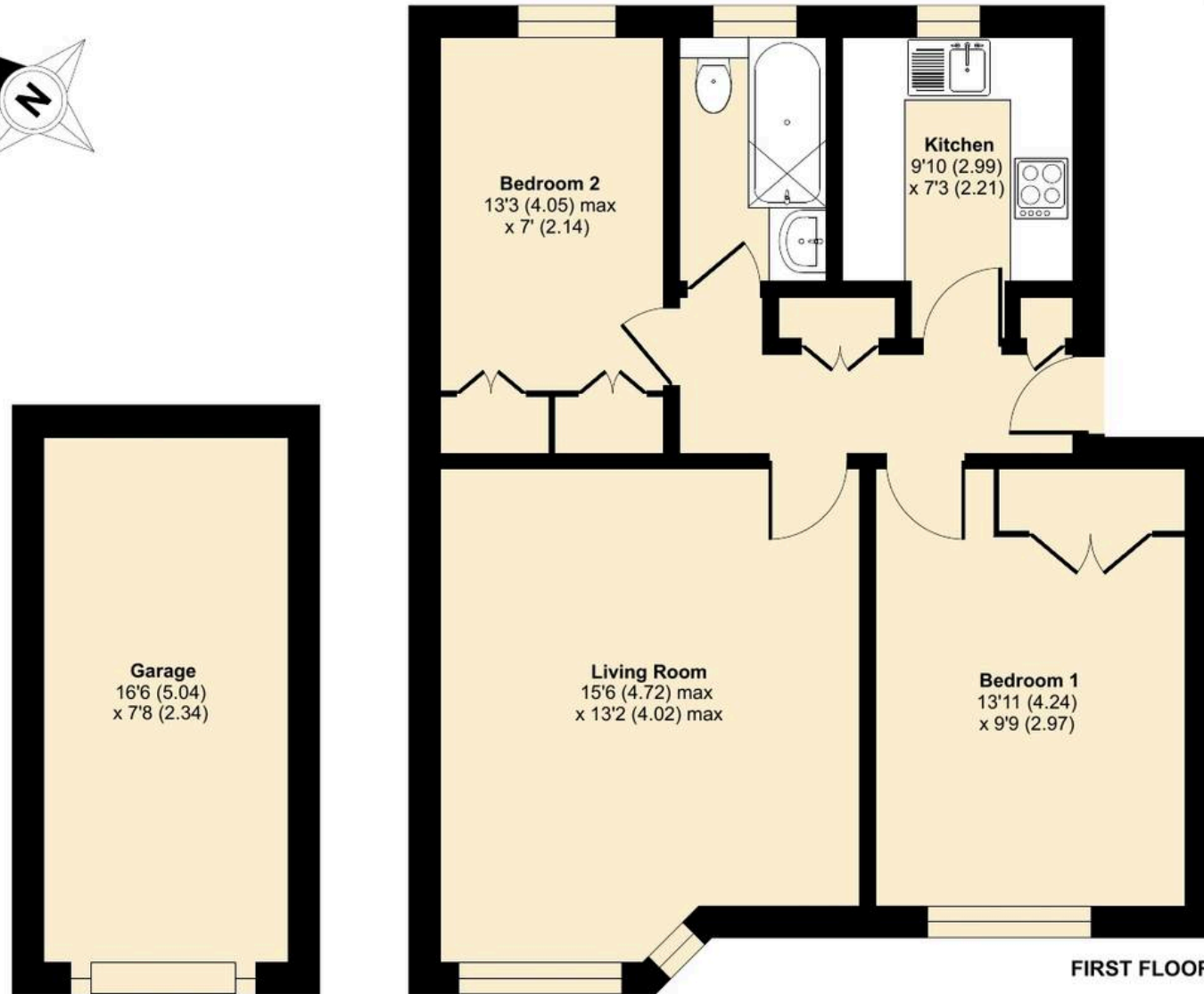
# Danehurst Court, Alexandra Road, Epsom, KT17

Approximate Area = 606 sq ft / 56.2 sq m

Garage = 127 sq ft / 11.7 sq m

Total = 733 sq ft / 67.9 sq m

For identification only - Not to scale



Floor plan produced in accordance with RICS Property Measurement 2nd Edition, Incorporating International Property Measurement Standards (IPMS2 Residential). © nichecom 2026. Produced for V&H Homes. REF: 1432704

**V&H**  
HOMES