



1 Dixon Mews
Kettering, NN15 5FS



Simpson & Partners

Built by Messrs Taylor Wimpey Homes in 2023, this stunning four-bedroom detached property occupies an enviable corner plot, boasting a larger-than-average driveway and a generous 20' x 12' garage. The property benefits from UPVC double glazing and gas radiator central heating throughout, ensuring comfort in every season.

The superb accommodation on the ground floor comprises a welcoming entrance hall, a convenient downstairs WC, and a luxury fitted 19' kitchen/dining room complete with built-in and integrated appliances, perfect for both everyday living and entertaining. A practical utility room adds further convenience, while the impressive 19' lounge features elegant French doors that open seamlessly onto the garden, flooding the space with natural light.

On the first floor, four well-proportioned bedrooms provide ample space for the whole family. The principal bedroom is complemented by a luxury fitted en-suite shower room, and the remaining bedrooms are served by a beautifully appointed luxury fitted bathroom.

Outside, the property is equally impressive, featuring an EV charging point for modern convenience and a beautifully landscaped rear garden that is partly enclosed by an attractive brick wall, offering both privacy and charm. The driveway and garage provide excellent parking and storage options.

An internal viewing is an absolute must to fully appreciate the quality, style, and thoughtful design of this superb family home.

Please Note: There is a Maintenance Charge £240.00 pa.

Price £385,000



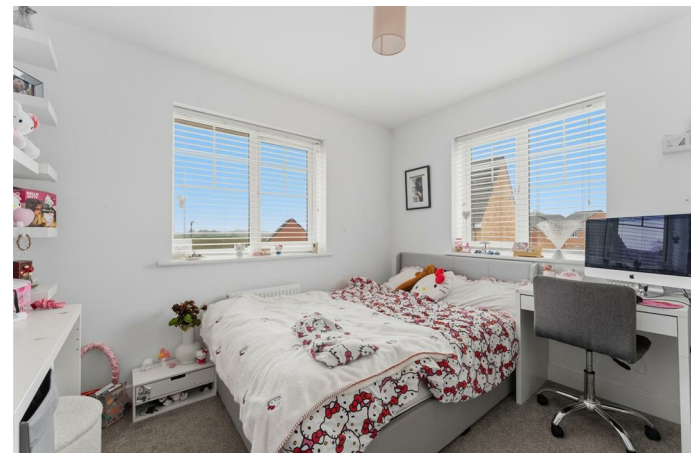
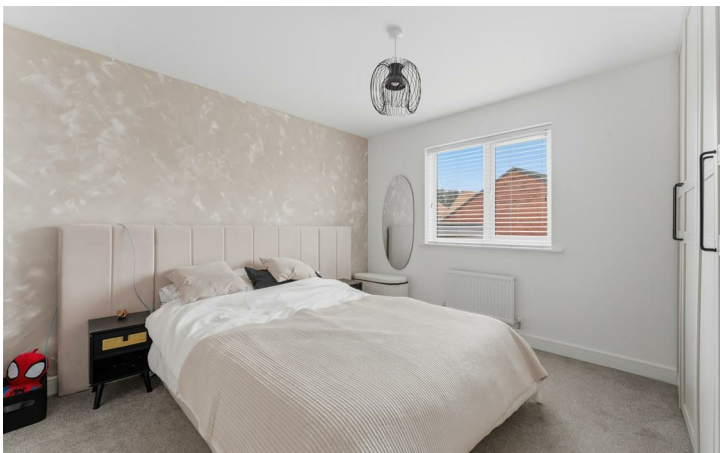
4



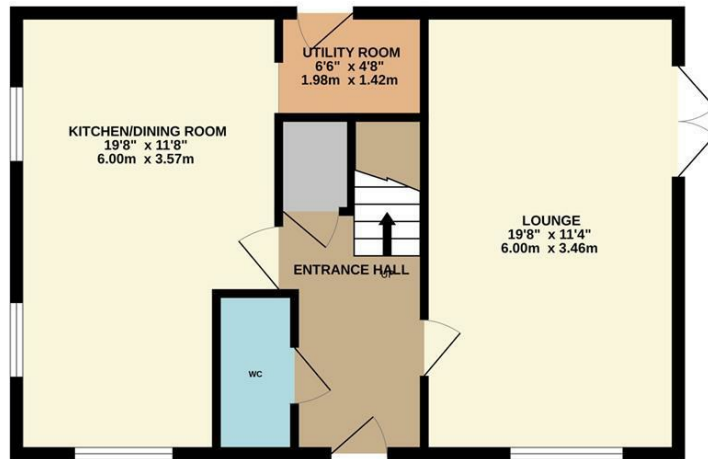
2



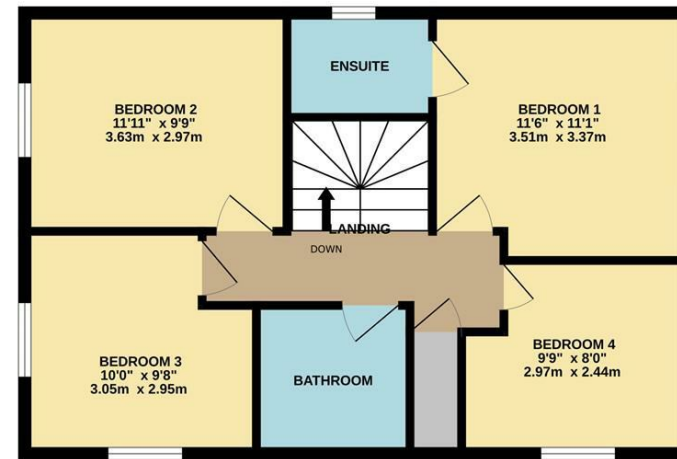
1



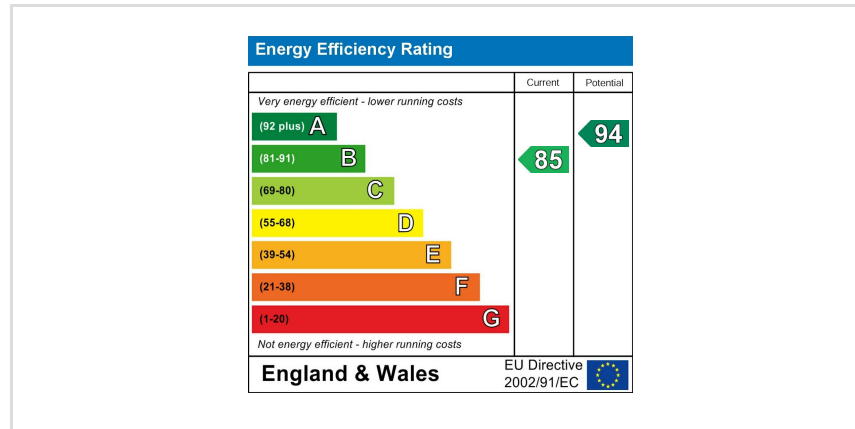
GROUND FLOOR



1ST FLOOR



Whilst every attempt has been made to ensure the accuracy of the floor plan contained here, measurements of doors, windows, rooms and any other items are approximate and no responsibility is taken for any error, omission, or mis-statement. The plan is copyright to Simpson and Partners and is for illustrative purposes and should only be used as such by any prospective purchaser. The services, systems and appliances shown have not been tested and no guarantee as to their operability can be given
 Made with Metropix ©2026



When you buy with Simpson and Partners, you know **you'll be in safe hands**. From the moment you walk through our doors, we'll make you **feel truly welcome**. Our sales consultants and financial advisors will take you through **every step of the process**, offering **free expert advice** along the way, from help choosing the right mortgage and insurance through to finding your conveyancer. And if you need help selling your home too, **with over 20 years of local experience, you can trust us to get you moving**.



**Simpson
& Partners**

Making Every
Journey Personal



01536 518200

kettering@simpsonandpartners.co.uk

<https://www.simpsonandpartners.co.uk/>

1 Silver Street, Kettering, Northants, NN16 0BN