

FOR SALE

## Prince of Wales Road, Kentish Town, NW5

PRICE £470,000



# Prince of Wales Road, Kentish Town, NW5

PRICE £470,000

Arranged over the first floor of a sophisticated development, this beautifully designed apartment combines contemporary elegance with the highest-quality finishes. Extending to approximately 462 sq ft, the accommodation is thoughtfully planned and comprises an inviting entrance hallway, a spacious double bedroom, a stylish wet room, and an open-plan reception/kitchen. The reception/kitchen area benefits from natural light and opens directly onto a private balcony, perfect for enjoying quiet moments outdoors.

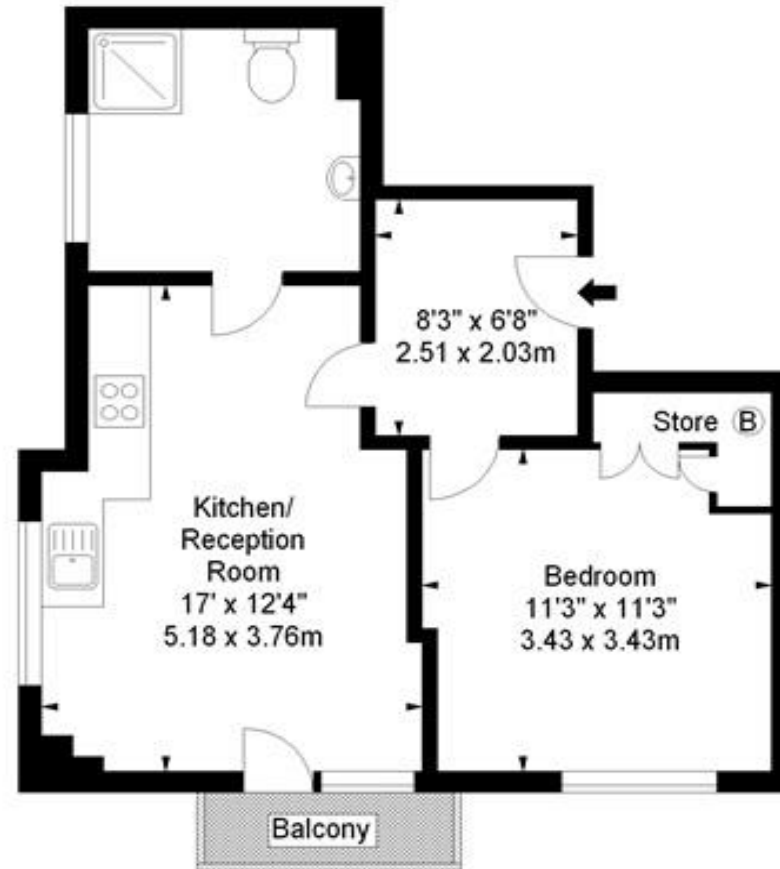
The apartment has been finished to an exceptional standard throughout, with top-of-the-range fittings, air conditioning, and a seamless attention to detail that enhances comfort and style. The property provides the perfect balance between modern living and the relaxed charm of its surroundings.

Situated in one of London's most desirable locations, the apartment enjoys proximity to the green spaces and village atmosphere of Primrose Hill and Hampstead, while offering superb transport links. Kentish Town Overground and Underground stations are within a short walking distance, making travel across the city straightforward.



Prince Of Wales Road, NW5

Approx. Gross Internal Area \*  
462 Ft<sup>2</sup> - 42.92 M<sup>2</sup>



First Floor

Illustration For Identification Purposes Only. Not To Scale

\* As Defined by RICS - Code of Measuring Practice

© Olivers Town Floorplans.

Tel : 020 7284 1222 , 020 7284 9987

Email : [info@oliverstown.com](mailto:info@oliverstown.com)

£ 470,000.00

1 Bedroom

Leasehold

1 Bathroom

London Borough of Camden

1 Reception

E Council Tax Band

Balcony

C EPC Band



KENTISH TOWN | 189 Kentish Town Rd | London | NW5 2JU | T: 020 7284 1222 | [hello@oliverstown.com](mailto:hello@oliverstown.com)

ASSOCIATED MAYFAIR | 121 Park Lane | London | W1K 7AG | T: 020 3368 8602 | [hello@oliverstown.com](mailto:hello@oliverstown.com)