



GREAT SMITH STREET, SW1P

£450 per week

- One bedroom
- Period mansion
- Natural light
- En-suite
- Desirable location
- Energy rating: d

@marshandparsons
marshandparsons.co.uk

MARSH &
PARSONS



ABOUT THE PROPERTY

This bright and spacious one bedroom apartment is found on the raised ground floor of a period mansion block in Westminster. The property consists of a bright reception room, a semi open plan kitchen and a bedroom with built-in storage.

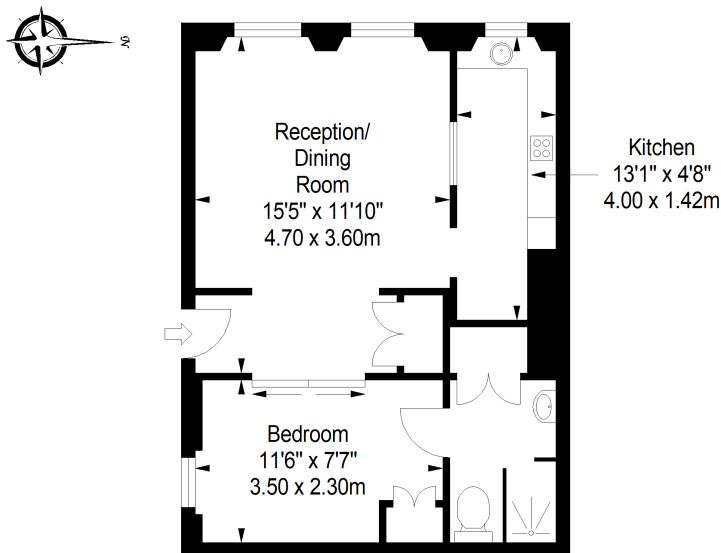
Equidistant from both St James' Park and Westminster underground stations, the location provides excellent links to both the City and the West End, making this an ideal London bolthole for a corporate applicant.



STEP INSIDE GREAT SMITH STREET

Westminster Mansions

Approximate Gross Internal Area
392 sq ft / 36.47 sq m



Upper Ground Floor

ILLUSTRATION FOR IDENTIFICATION PURPOSES ONLY

ALL MEASUREMENTS ARE MAXIMUM, AND INCLUDE WINDOW BAYS AND WARDROBES WHERE APPLICABLE
THIS PLAN MUST NOT BE REPRODUCED BY ANY OTHER PERSON WITHOUT PERMISSION

Pimlico & Westminster
020 7828 8100

Energy Rating: D We aim to make our particulars both accurate and reliable. However, they are not guaranteed; nor do they form part of an offer or contract. If you require clarification on any points then please contact us, especially if you're traveling some distance to view. Please note that appliances and heating systems have not been tested and therefore no warranties can be given as to their good working order

MARSH &
PARSONS