

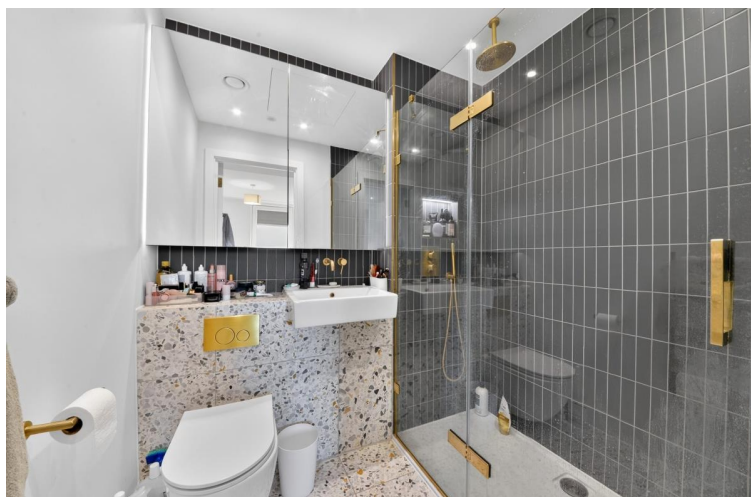
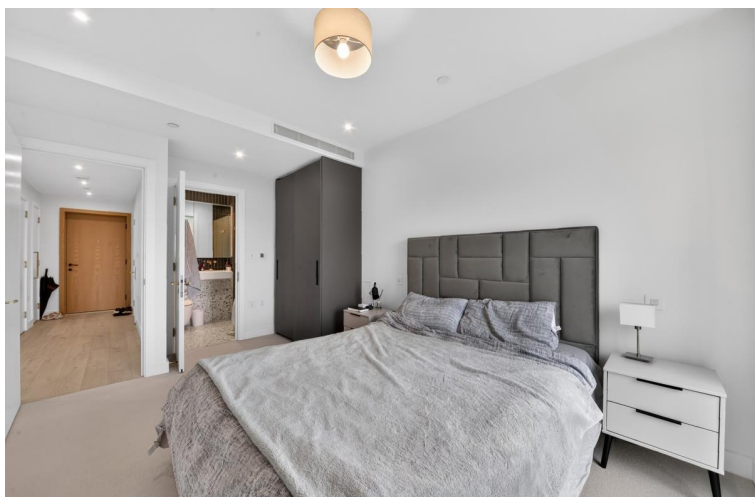
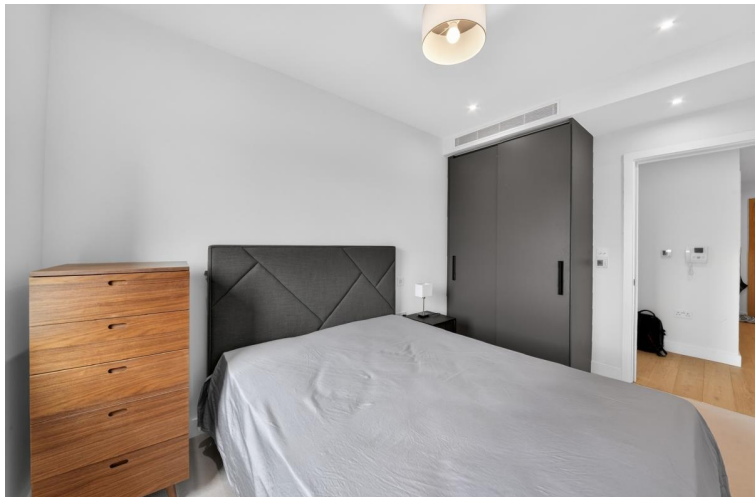


Grand Central Apartments, London NW

Price £4,000 per month - Furnished







Description

The apartment is finished to a high standard and comprises an open plan living space, with a stylish and fully integrated kitchen, living area with floor to ceiling windows, a spacious principal bedroom with fitted wardrobes and a modern en-suite bathroom, a second double bedroom and a family bathroom suite with bath and overhead rainfall shower.

Each apartment has a private balcony, and the apartment is offered furnished.

Grand Central Apartments, a new residential tower just a short walk to Kings Cross with secure entry, concierge service, lift access and bicycle storage.

Located in the heart of one of the city's most dynamic neighbourhoods, Grand Central Apartments offers unparalleled access to world-class dining, shopping, entertainment, and transportation. This includes Coals Drops Yard, located just a stones throw away, Multiple transport links are just steps away, this includes the London Underground, National Rail and the Eurostar - connecting you effortlessly to the entire city and beyond.

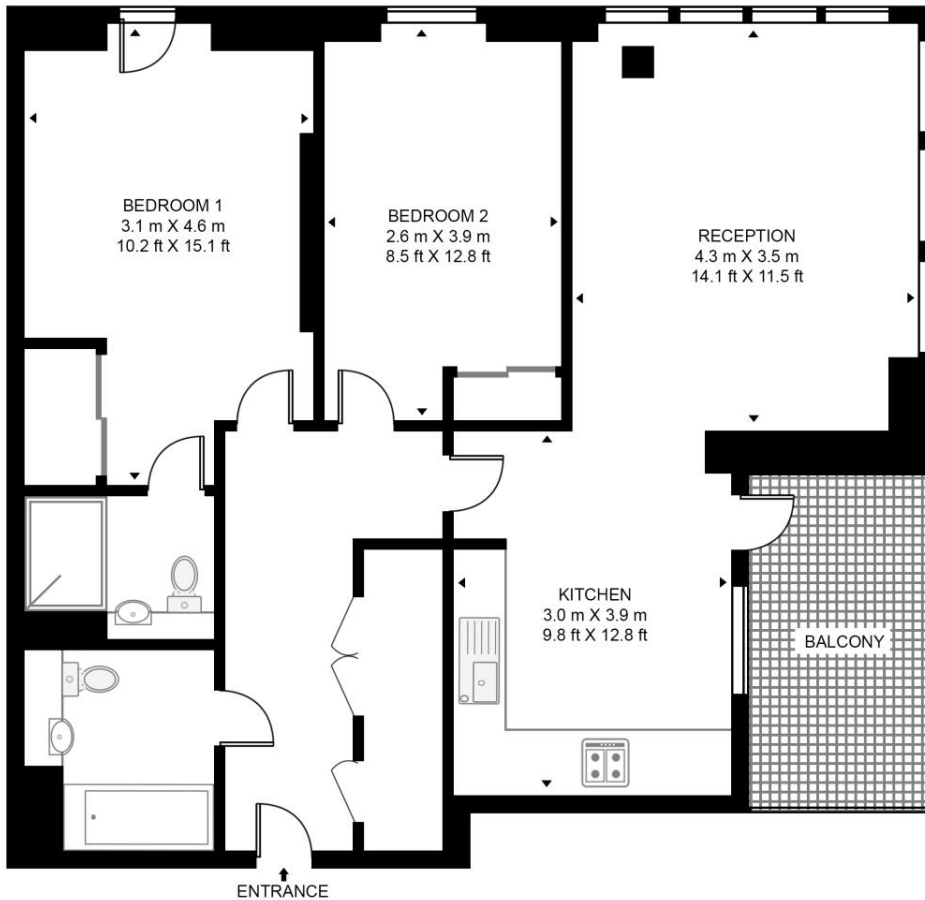
Council tax band: F. Rent is payable on a monthly basis, and you may be required to pay more than a month's rent in advance for tenancies with annual rents exceeding £100,000. You will be required to pay a 1 week holding deposit following a successful offer. Tenancies with annual rents up to £50,000 will require a 5 weeks' security deposit, while those exceeding this threshold will require a 6 weeks' deposit. Utility bills, council tax, telephone line and broadband are not included in the rent. As well as paying the rent, you may also be required to make some additional permitted payments. If your tenancy does not qualify as an APT, additional fees may apply. Please visit jll.co.uk/fees for details of fees that may be payable when renting a property. To check broadband and mobile phone coverage please visit Ofcom here ofcom.org.uk/phones-telecoms-and-internet/advice-for-consumers/advice/ofcom-checker

- Furnished
- Concierge Services
- Excellent Transport Links
- Balcony
- Lift Access
- Bicycle Storage
- Deposit amount: £4,615
- Council tax: F

Floorplan

781 sq ft | 73 sq m

GRAND CENTRAL APARTMENTS APPROXIMATE GROSS INTERNAL FLOOR AREA 781 SQ.FT (72.6 SQ.M)



SIXTH FLOOR



HDVA

This floor plan has been defined by the RICS Code of Measurement. This floor plan and all others are for approximate representative purposes only and upon usage is agreed to as such by the client.

WWW: hdvirtualart.com | TEL: 0203.974.1567 | EMAIL: info@hdvirtualart.com

Mayfair and Marylebone
St George Street,
London W1S 2FQ
+44 207 399 5550
mayfair@jll.com

Urban living, your way.

jll.co.uk/residential

© 2019 Jones Lang LaSalle IP, Inc. All rights reserved. All information contained herein is from sources deemed reliable; however, no representation or warranty is made to the accuracy thereof.

